

Nur für Forschungszwecke

# CAPRIN1 Polyklonaler Antikörper

Katalog-Nr.: 15112-1-AP

Vorgestelltes Produkt

55 Publikationen



## Allgemeine Informationen

<b>Katalog-Nr.:</b> 15112-1-AP	<b>GenBank-Zugangsnummer:</b> BC001731	<b>Reinigungsmethode:</b> Antigen-Affinitätsreinigung
<b>Größe:</b> 150ul, Konzentration: 600 µg/ml von Nanodrop;	<b>GeneID (NCBI):</b> 4076	<b>Empfohlene Verdünnungen:</b> WB 1:5000-1:50000
<b>Wirt:</b> Kaninchen	<b>Vollständiger Name:</b> cell cycle associated protein 1	IP 0.5-4.0 µg für IP und 1:2000-1:10000 für WB
<b>Isotyp:</b> IgG	<b>Berechnete Masse:</b> 78 kDa	IHC 1:50-1:500
<b>Immunogen Katalognummer:</b> AG7099	<b>Beobachtete Masse:</b> 116 kDa	IF 1:200-1:800

## Anwendungen

**Geprüfte Anwendungen:**  
FC, IF, IHC, IP, WB, ELISA

**In Publikationen genannte Anwendungen:**  
IF, IHC, IP, RIP, WB

**Getestete Reaktivität:**  
Human, Maus, Ratte

**Zitierte Arten:**  
Hausschwein, Human, Maus, Ratte

**Hinweis-IHC: Antigenemaskierung mit TE-Puffer pH 9,0 empfohlen. (\*) Wahlweise kann die Antigenemaskierung auch mit Citratpuffer pH 6,0 erfolgen.**

**Positivkontrollen:**

**WB:** HEK-293-Zellen, HEK-293T-Zellen, HeLa-Zellen, Jurkat-Zellen, Maushirngewebe, NIH/3T3-Zellen, Rattenhirngewebe

**IP:** HeLa-Zellen,

**IHC:** humanes Mammakarzinomgewebe, humanes Hodengewebe, humanes Prostatakarzinomgewebe

**IF:** HeLa-Zellen, HepG2-Zellen, OC2-Zellen

## Hintergrundinformationen

CAPRIN1 (Caprin-1) is a cytoplasmic phosphoprotein which may regulate the transport and translation of mRNAs of proteins involved in synaptic plasticity in neurons and cell proliferation and migration in multiple cell types. Its levels, except in the brain, are tightly correlated with cellular proliferation. Suppression of expression of human Caprin-1 resulted in slowing of the proliferation rate, which suggests its essential for normal cellular proliferation.

## Bemerkenswerte Veröffentlichungen

Verfasser	Pubmed ID	Journal	Anwendung
Colin T Sheehan	36183834	J Biol Chem	WB
Silvia De Rubeis	24050404	Neuron	WB, IP
Brian D Freibaum	33502444	J Cell Biol	IF

## Lagerung

**Lagerungsbedingungen:**

Bei -20°C lagern. Nach dem Versand ein Jahr lang stabil

**Lagerungspuffer:**

PBS mit 0.02% Natriumazid und 50% Glycerin pH 7.3.

Aliquotieren ist nicht notwendig bei -20°C Lagerung

\*\*\* 20ul-Größen enthalten 0.1% BSA

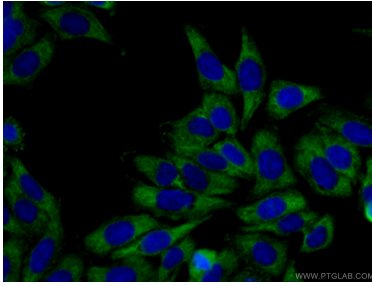
For technical support and original validation data for this product please contact:

T: 1 (888) 4PTGLAB (1-888-478-4522) (toll free in USA), or 1(312) 455-8498 (outside USA)

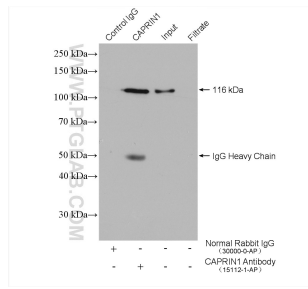
E: proteintech@ptglab.com  
W: ptglab.com

This product is exclusively available under Proteintech Group brand and is not available to purchase from any other manufacturer.

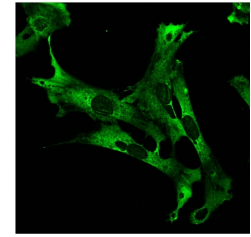
## Ausgewählte Validierungsdaten



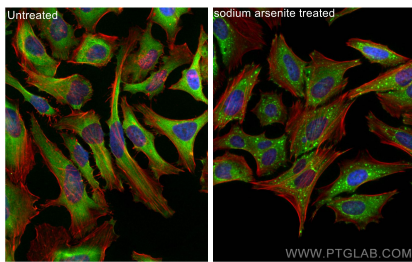
Immunofluorescent analysis of (-20°C Ethanol) fixed HepG2 cells using 15112-1-AP (CAPRIN1 antibody) at dilution of 1:50 and CoraLite488-Conjugated AffiniPure Goat Anti-Rabbit IgG(H+L).



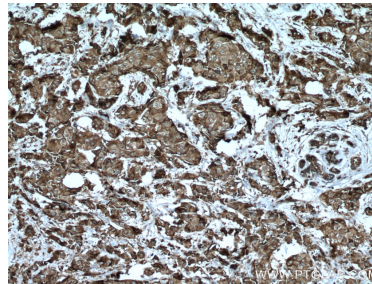
IP result of anti-CAPRIN1 (IP:15112-1-AP, 4ug; Detection:15112-1-AP 1:5000) with HeLa cells lysate 1600 ug.



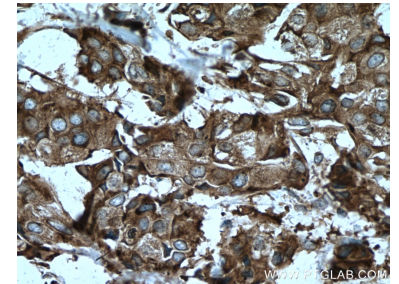
IF result of anti-CAPRIN1 (15112-1-AP, 1:200) with OC2 cells by Dr. Emily Towers.



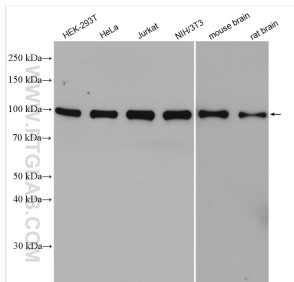
Immunofluorescent analysis of (4% PFA) fixed sodium arsenite treated HeLa cells using CAPRIN1 antibody (15112-1-AP) at dilution of 1:200 and CoraLite®488-Conjugated AffiniPure Goat Anti-Rabbit IgG(H+L), CL594-Phalloidin (red).



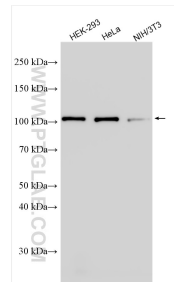
Immunohistochemical analysis of paraffin-embedded human breast cancer tissue slide using 15112-1-AP (CAPRIN1 antibody) at dilution of 1:200 (under 10x lens. Heat mediated antigen retrieval with Tris-EDTA buffer (pH 9.0).



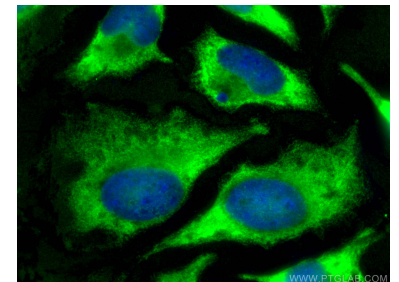
Immunohistochemical analysis of paraffin-embedded human breast cancer tissue slide using 15112-1-AP (CAPRIN1 antibody) at dilution of 1:200 (under 40x lens. Heat mediated antigen retrieval with Tris-EDTA buffer (pH 9.0).



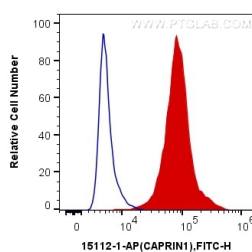
Various lysates were subjected to SDS PAGE followed by western blot with 15112-1-AP (CAPRIN1 antibody) at dilution of 1:10000 incubated at room temperature for 1.5 hours.



Various lysates were subjected to SDS PAGE followed by western blot with 15112-1-AP (CAPRIN1 antibody) at dilution of 1:25000 incubated at room temperature for 1.5 hours.



Immunofluorescent analysis of (-20°C Methanol) fixed HeLa cells using CAPRIN1 antibody (15112-1-AP) at dilution of 1:400 and CoraLite®488-Conjugated AffiniPure Goat Anti-Rabbit IgG(H+L).



1X10<sup>6</sup> NIH/3T3 cells were intracellularly stained with 0.2 ug Anti-Human CAPRN1 (15112-1-AP) and CoraLite®488-Conjugated AffiniPure Goat Anti-Rabbit IgG(H+L) at dilution 1:1000 (red), or 0.2 ug Control Antibody. Cells were fixed with 4% PFA and permeabilized with Flow Cytometry Perm Buffer (PF00011-C).