

Nur für Forschungszwecke

GP73/GOLPH2 Polyklonaler Antikörper



Katalog-Nr.: 15126-1-AP

Vorgestelltes Produkt

9 Publikationen

Allgemeine Informationen

Katalog-Nr.:

15126-1-AP

Größe:

150ul, Konzentration: 1000 µg/ml von 51280

Nanodrop;

Wirt:

Kaninchen

Isotyp:

IgG

Immunogen Katalognummer:

AG7207

GenBank-Zugangsnummer:

BC001740

GeneID (NCBI):

51280

Vollständiger Name:

golgi membrane protein 1

Berechnete Masse:

45 kDa

Beobachtete Masse:

70-75 kDa

Reinigungsmethode:

Antigen-Affinitätsreinigung

Empfohlene Verdünnungen:

WB 1:1000-1:6000

IP 0.5-4.0 µg für IP und 1:500-1:2000

für WB

IF 1:200-1:800

Anwendungen

Geprüfte Anwendungen:

FC, IF, IP, WB, ELISA

In Publikationen genannte Anwendungen:

IF, IHC, WB

Getestete Reaktivität:

Human

Zitierte Arten:

Human, Maus

Positivkontrollen:

WB: LNCaP-Zellen, HepG2-Zellen, HuH-7-Zellen, MDA-MB-231-Zellen

IP: HeLa-Zellen,

IF: HeLa-Zellen,

Hintergrundinformationen

Golgi phosphoprotein 2 (GOLPH2, also known as GP73 or GOLM1) is a resident Golgi type-II membrane protein. It is predominantly expressed in the epithelial cells of many human tissues. GOLPH2 traffics through endosomes and can be secreted into the circulation. Its expression is upregulated in a number of tumors and GOLPH2 could be a promising serum marker for hepatocellular carcinoma. We got 70-75 kDa in western blotting due to phosphorylation.

Bemerkenswerte Veröffentlichungen

Verfasser	Pubmed ID	Journal	Anwendung
Yan Lin	36211823	Oxid Med Cell Longev	IHC
Xuewu Zhang	27697522	Biochem Biophys Res Commun	WB,IF
T Wang	24720891	Curr Alzheimer Res	

Lagerung

Lagerungsbedingungen:

Bei -20°C lagern. Nach dem Versand ein Jahr lang stabil

Lagerungspuffer:

PBS mit 0.02% Natriumazid und 50% Glycerin pH 7.3.

Aliquotieren ist nicht notwendig bei -20°C Lagerung

*** 20ul-Größen enthalten 0.1% BSA

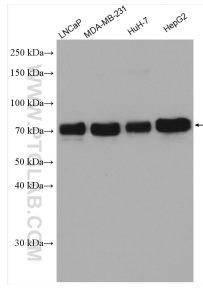
For technical support and original validation data for this product please contact:

T: 1 (888) 4PTGLAB (1-888-478-4522) (toll free in USA), or 1(312) 455-8498 (outside USA)

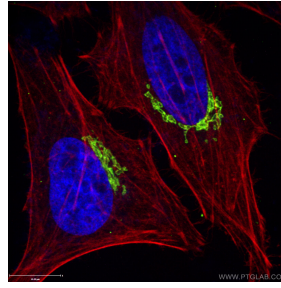
E: proteintech@ptglab.com
W: ptglab.com

This product is exclusively available under Proteintech Group brand and is not available to purchase from any other manufacturer.

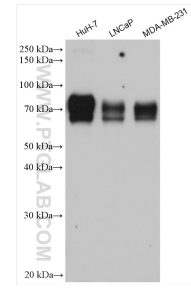
Ausgewählte Validierungsdaten



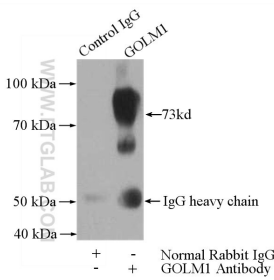
Various lysates were subjected to SDS PAGE followed by western blot with 15126-1-AP (GP73/GOLPH2 antibody) at dilution of 1:4000 incubated at room temperature for 1.5 hours.



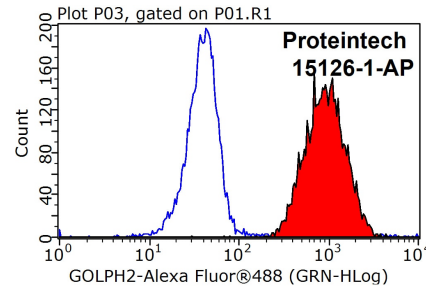
Immunofluorescent analysis of (4% PFA) fixed HeLa cells using 15126-1-AP (GP73/GOLPH2 antibody), at dilution of 1:400 and CoraLite®488-Conjugated AffiniPure Goat Anti-Rabbit IgG(H+L). The cytoskeleton and nuclei were stained with CL594-phalloidin and DAPI, respectively.



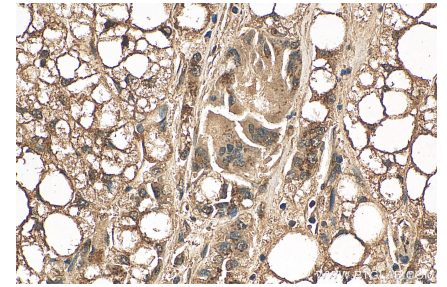
Various lysates were subjected to SDS PAGE followed by western blot with 15126-1-AP (GP73/GOLPH2 antibody) at dilution of 1:20000 incubated at room temperature for 1.5 hours.



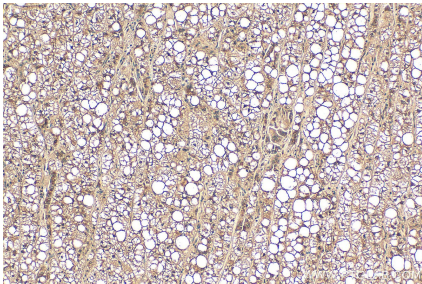
IP Result of anti-GP73/GOLPH2 (IP:15126-1-AP, 4ug; Detection:15126-1-AP 1:1000) with HeLa cells lysate 2800ug.



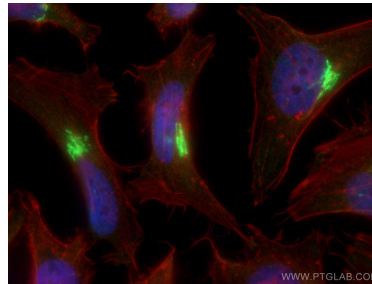
1x10⁶ HeLa cells were stained with 0.2ug GP73/GOLPH2 antibody (15126-1-AP, red) and control antibody (blue). Fixed with 90% MeOH blocked with 3% BSA (30 min). Alexa Fluor 488-conjugated AffiniPure Goat Anti-Rabbit IgG(H+L) with dilution 1:1000.



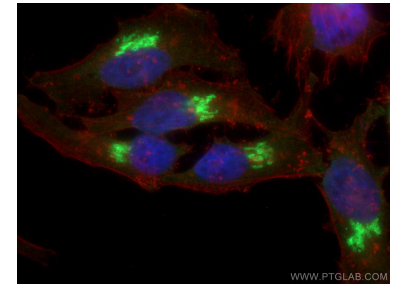
Immunohistochemical analysis of paraffin-embedded human liver cancer tissue slide using 15126-1-AP (GP73/GOLPH2 antibody) at dilution of 1:200 (under 40x lens). Heat mediated antigen retrieval with Tris-EDTA buffer (pH 9.0).



Immunohistochemical analysis of paraffin-embedded human liver cancer tissue slide using 15126-1-AP (GP73/GOLPH2 antibody) at dilution of 1:200 (under 10x lens). Heat mediated antigen retrieval with Tris-EDTA buffer (pH 9.0).



Immunofluorescent analysis of (4% PFA) fixed HeLa cells using GP73/GOLPH2 antibody (15126-1-AP) at dilution of 1:1800 and CoraLite®488-Conjugated AffiniPure Goat Anti-Rabbit IgG(H+L), CL594-Phalloidin (red).



Immunofluorescent analysis of (4% PFA) fixed HeLa cells using GP73/GOLPH2 antibody (15126-1-AP) at dilution of 1:2000 and CoraLite®488-Conjugated AffiniPure Goat Anti-Rabbit IgG(H+L), CL594-Phalloidin (red).