

Nur für Forschungszwecke

S100 Beta Polyklonaler Antikörper

Katalog-Nr.: 15146-1-AP

66 Publikationen



Allgemeine Informationen

Katalog-Nr.: 15146-1-AP	GenBank-Zugangsnummer: BC001766	Reinigungsmethode: Antigen-Affinitätsreinigung
Größe: 150ul, Konzentration: 1000 µg/ml von 6285 Nanodrop;	GeneID (NCBI): Vollständiger Name: S100 calcium binding protein B	Empfohlene Verdünnungen: WB 1:500-1:1000 IHC 1:400-1:1600 IF 1:50-1:500
Wirt: Kaninchen	Berechnete Masse: 11 kDa	
Isotyp: IgG	Beobachtete Masse: 11 kDa	
Immunogen Katalognummer: AG7440		

Anwendungen

Geprüfte Anwendungen:

IF, IHC, WB, ELISA

In Publikationen genannte Anwendungen:

FC, IF, IHC, WB

Getestete Reaktivität:

Human, Maus, Ratte

Zitierte Arten:

Human, Maus, Ratte

Positivkontrollen:

WB: A375-Zellen, C6-Zellen, humanes Hirngewebe, humanes Hodengewebe, Maushirngewebe, U-251-Zellen

IHC: humanes malignes Melanomgewebe, humanes Gliomgewebe, Maushirngewebe

IF: Maushirngewebe, A375-Zellen, humanes malignes Melanomgewebe

Hinweis-IHC: Antigenmaskierung mit TE-Puffer pH 9,0 empfohlen. (*) Wahlweise kann die Antigenmaskierung auch mit Citratpuffer pH 6,0 erfolgen.

Hintergrundinformationen

S100B is a member of the S100 family of proteins containing 2 EF-hand calcium-binding motifs and has been implicated in the regulation of cellular activities such as metabolism, motility, and proliferation. In the nervous system, S100B is constitutively released by astrocytes into the extracellular space, and at nanomolar concentrations, it can promote neurite outgrowth and protect neurons against oxidative stress. Within the central nervous system (CNS), S100B is thought to be a marker for astroglial activation, linking astrocyte dysfunction to schizophrenia. In addition to astrocytes, S100B is released from many cell types, such as adipocytes, chondrocytes, cardiomyocytes, and lymphocytes. Serum S100B represents a new biomarker for mood disorders.

Bemerkenswerte Veröffentlichungen

Verfasser	Pubmed ID	Journal	Anwendung
Yu-Pu Liu	30261232	Neurosci Lett	IF
Liang Yan	36144631	Molecules	
Dipro Bose	32927823	Nutrients	IF

Lagerung

Lagerungsbedingungen:

Bei -20°C lagern. Nach dem Versand ein Jahr lang stabil

Lagerungspuffer:

PBS mit 0.02% Natriumazid und 50% Glycerin pH 7.3.

Aliquotieren ist nicht notwendig bei -20°C Lagerung

*** 20ul-Größen enthalten 0.1% BSA

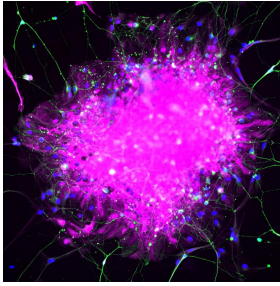
For technical support and original validation data for this product please contact:

T: 1 (888) 4PTGLAB (1-888-478-4522) (toll free in USA), or 1(312) 455-8498 (outside USA)

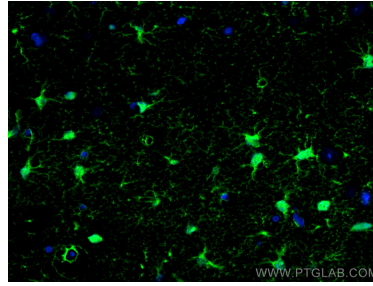
E: proteintech@ptglab.com
W: ptglab.com

This product is exclusively available under Proteintech Group brand and is not available to purchase from any other manufacturer.

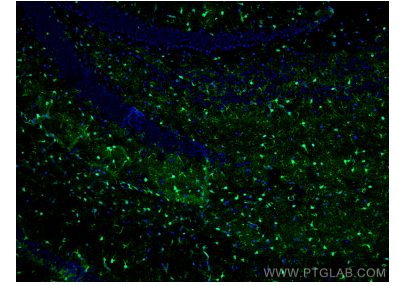
Ausgewählte Validierungsdaten



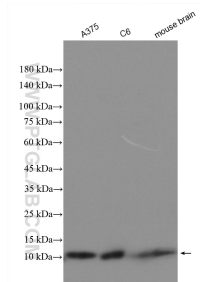
Immunofluorescence analysis of human pluripotent stem cell-derived astrocytes with S100 β (15146-1-AP) at 1/200 (Magenta) and neurons with TUJ1 (66375-1-Ig) at 1:500 (Green). The sample was fixed with 4% Paraformaldehyde and permeabilized with 0.3% Triton X-100. Alexa Fluor 488-conjugated goat anti-mouse IgG (1/500) and Alexa Fluor 594-conjugated goat anti-rabbit IgG (1/500) were used as the secondary antibodies. Nuclei were counterstained with



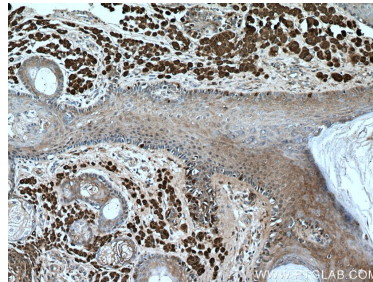
Immunofluorescent analysis of (4% PFA) fixed mouse brain tissue using S100 Beta antibody (15146-1-AP) at dilution of 1:200 and CoraLite@488-Conjugated AffiniPure Goat Anti-Rabbit IgG(H+L).



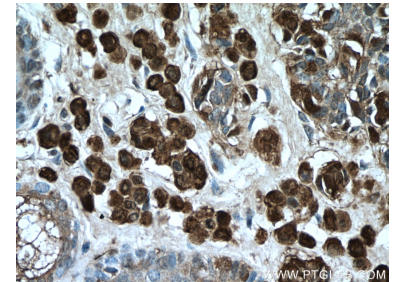
Immunofluorescent analysis of (4% PFA) fixed mouse brain tissue using S100 Beta antibody (15146-1-AP) at dilution of 1:200 and CoraLite@488-Conjugated AffiniPure Goat Anti-Rabbit IgG(H+L).



Various lysates were subjected to SDS PAGE followed by western blot with 15146-1-AP (S100 beta antibody) at dilution of 1:500 incubated at room temperature for 1.5 hours.



Immunohistochemical analysis of paraffin-embedded human malignant melanoma tissue slide using 15146-1-AP (S100 beta antibody) at dilution of 1:800 (under 10x lens).



Immunohistochemical analysis of paraffin-embedded human malignant melanoma tissue slide using 15146-1-AP (S100 beta antibody) at dilution of 1:800 (under 40x lens).