

Allgemeine Informationen

Katalog-Nr.: 15169-1-AP	GenBank-Zugangsnummer: BC004988	Reinigungsmethode: Antigen-Affinitätsreinigung
Größe: 150ul , Konzentration: 133 µg/ml durch die Bradford-Methode mit BSA als Standard;	GeneID (NCBI): 55527	Empfohlene Verdünnungen: WB 1:200-1:1000 IHC 1:20-1:200
Wirt: Kaninchen	Vollständiger Name: fem-1 homolog a (C. elegans)	
Isotyp: IgG	Berechnete Masse: 74 kDa	
Immunogen Katalognummer: AG7357	Beobachtete Masse: 74 kDa	

Anwendungen

Geprüfte Anwendungen: IHC, WB, ELISA	Positivkontrollen: WB : U-937-Zellen, IHC : humanes Skelettmuskelgewebe,
Getestete Reaktivität: Human	

Hinweis-IHC: Antigendemaskierung mit TE-Puffer pH 9,0 empfohlen. (*) Wahlweise kann die Antigendemaskierung auch mit Citratpuffer pH 6,0 erfolgen.

Hintergrundinformationen

FEM1A, also named as Protein fem-1 homolog A-A, is a 654 amino acid protein, which belongs to the fem-1 family. FEM1A is highly expressed in adult heart and skeletal muscle. FEM1A is a probable component of an E3 ubiquitin-protein ligase complex, in which it may act as a substrate recognition subunit. FEM1A may participate in anti-inflammatory signaling via its interaction with PTGER4. Furthermore, Fem1a expression is down-regulated in rhabdomyosarcoma cells suggesting that the FEM1A gene may be involved in muscle differentiation or be at least a marker of abnormal differentiation in rhabdomyosarcoma. Knowing that a molecular weight of 76 kDa is predicted for human FEM1A, but phosphorylated FEM1A is 95-100 kDa (PMID: 19406122).

Lagerung

Lagerungsbedingungen:
Bei -20°C lagern. Nach dem Versand ein Jahr lang stabil
Lagerungspuffer:
PBS mit 0.02% Natriumazid und 50% Glycerin pH 7.3.
Aliquotieren ist nicht notwendig bei -20°C Lagerung

***** 20ul-Größen enthalten 0.1% BSA**

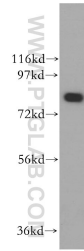
For technical support and original validation data for this product please contact:

T: 1 (888) 4PTGLAB (1-888-478-4522) (toll free
in USA), or 1(312) 455-8498 (outside USA)

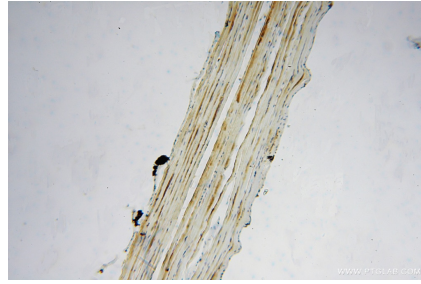
E: proteintech@ptglab.com
W: ptglab.com

This product is exclusively available under Proteintech Group brand and is not available to purchase from any other manufacturer.

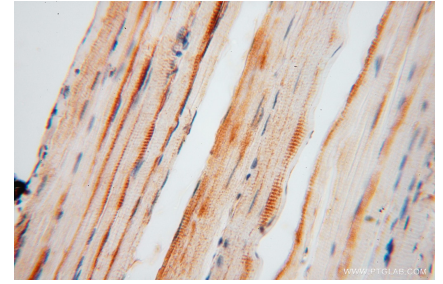
Ausgewählte Validierungsdaten



U-937 cells were subjected to SDS PAGE followed by western blot with 15169-1-AP (FEM1A antibody) at dilution of 1:300 incubated at room temperature for 1.5 hours.



Immunohistochemical analysis of paraffin-embedded human skeletal muscle using 15169-1-AP (FEM1A antibody) at dilution of 1:50 (under 10x lens).



Immunohistochemical analysis of paraffin-embedded human skeletal muscle using 15169-1-AP (FEM1A antibody) at dilution of 1:50 (under 40x lens).