

Nur für Forschungszwecke

# CRAT Polyklonaler Antikörper

Katalog-Nr.: 15170-1-AP

Vorgestelltes Produkt

8 Publikationen



## Allgemeine Informationen

Katalog-Nr.:

15170-1-AP

Größe:

150ul, Konzentration: 350 µg/ml von Nanodrop;

Wirt:

Kaninchen

Isotyp:

IgG

Immunogen Katalognummer:

AG7422

GenBank-Zugangsnummer:

BC000723

GeneID (NCBI):

1384

Vollständiger Name:

carnitine acetyltransferase

Berechnete Masse:

71 kDa

Beobachtete Masse:

55-68 kDa

Reinigungsmethode:

Antigen-Affinitätsreinigung

Empfohlene Verdünnungen:

WB 1:500-1:1000

IP 0.5-4.0 µg für IP und 1:200-1:1000 für WB

## Anwendungen

Geprüfte Anwendungen:

IP, WB, ELISA

In Publikationen genannte Anwendungen:

WB

Getestete Reaktivität:

Human, Maus, Ratte

Zitierte Arten:

Maus, Ratte, Ziege

Positivkontrollen:

WB: Mausherzgewebe, Maus-Skelettmuskelgewebe

IP: Maus-Skelettmuskelgewebe,

## Hintergrundinformationen

CRAT, also named as CAT1, belongs to the carnitine/choline acetyltransferase family. It is specific for short chain fatty acids. CRAT seems to affect the flux through the pyruvate dehydrogenase complex. It may be involved as well in the transport of acetyl-CoA into mitochondria. Carnitine palmitoyltransferase (CPT) deficiencies are common disorders of mitochondrial fatty acid oxidation. The CPT system is made up of two separate proteins located in the outer (CPT1) and inner (CPT2) mitochondrial membranes. CRAT is an active forms for carnitine acetyltransferase. This antibody can bind the close sequences genes.

## Bemerkenswerte Veröffentlichungen

Verfasser	Pubmed ID	Journal	Anwendung
Joongyu D Song	33035493	Cell Metab	WB
Xutong Sun	32554303	Redox Biol	WB
Guoyu Yu	29535221	Cancer Res	

## Lagerung

Lagerungsbedingungen:

Bei -20°C lagern. Nach dem Versand ein Jahr lang stabil

Lagerungspuffer:

PBS mit 0.02% Natriumazid und 50% Glycerin pH 7.3.

Aliquotieren ist nicht notwendig bei -20°C Lagerung

\*\*\* 20ul-Größen enthalten 0.1% BSA

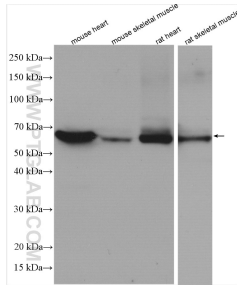
For technical support and original validation data for this product please contact:

T: 1 (888) 4PTGLAB (1-888-478-4522) (toll free in USA), or 1(312) 455-8498 (outside USA)

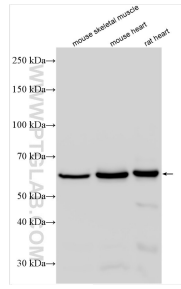
E: proteintech@ptglab.com  
W: ptglab.com

This product is exclusively available under Proteintech Group brand and is not available to purchase from any other manufacturer.

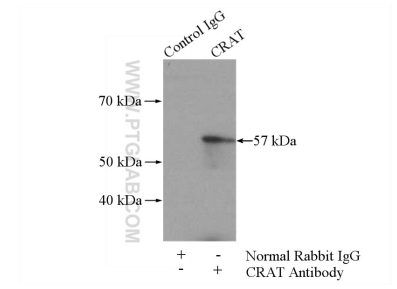
## Ausgewählte Validierungsdaten



Various lysates were subjected to SDS PAGE followed by western blot with 15170-1-AP (CRAT antibody) at dilution of 1:800 incubated at room temperature for 1.5 hours.



Various lysates were subjected to SDS PAGE followed by western blot with 15170-1-AP (CRAT antibody) at dilution of 1:8000 incubated at room temperature for 1.5 hours.



IP Result of anti-CRAT (IP:15170-1-AP, 4 $\mu$ g; Detection:15170-1-AP 1:300) with mouse skeletal muscle tissue lysate 3600 $\mu$ g.