

Allgemeine Informationen

Katalog-Nr.: 15171-1-AP	GenBank-Zugangsnummer: BC004982	Reinigungsmethode: Antigen-Affinitätsreinigung
Größe: 150ul, Konzentration: 600 µg/ml von Nanodrop und 220 µg/ml durch die Bradford-Methode mit BSA als Standard;	GeneID (NCBI): 2821	Empfohlene Verdünnungen: WB 1:500-1:2000 IHC 1:100-1:400 IF 1:50-1:500
Wirt: Kaninchen	Vollständiger Name: glucose phosphate isomerase	
Isotyp: IgG	Berechnete Masse: 63 kDa	
Immunogen Katalognummer: AG7423	Beobachtete Masse: 55-64 kDa	

Anwendungen

Geprüfte Anwendungen: IF, IHC, WB, ELISA	Positivkontrollen:
In Publikationen genannte Anwendungen: IF, IHC, WB	WB: HeLa-Zellen, PC-3-Zellen, PC3-Zellen, U251-Zellen, U87-MG-Zellen
Getestete Reaktivität: Human, Maus, Ratte	IHC: humanes Lungenkarzinomgewebe,
Zitierte Arten: Hausschwein, Human, Maus, Ratte	IF: PC-3-Zellen,
Hinweis-IHC: Antigendemaskierung mit TE-Puffer pH 9,0 empfohlen. (*) Wahlweise kann die Antigendemaskierung auch mit Citratpuffer pH 6,0 erfolgen.	

Hintergrundinformationen

GPI (Glucose-6-phosphate isomerase), which is also named as autocrine motility factor (AMF), phosphoglucose isomerase (PGI), Neuroleukinin (NLK), phosphohexose isomerase (PHI) or sperm antigen 36 (SA-36), is a housekeeping cytosolic enzyme that plays a key role in both glycolysis and gluconeogenesis pathways. It is also a multifunctional protein that displays cytokine properties, eliciting mitogenic, motogenic, and differentiation activities, and has been implicated in tumor progression and metastasis (PMID:12783864, 19603112). This protein can exist as a homodimer in the catalytically active form and a monomer in the secreted form (PMID:11371164). It has 2 isoforms produced by alternative splicing with the calculated molecular mass of 63-64kDa, and an apparent molecular mass of 55 and 64 kDa under non-reducing and reducing conditions, respectively (PMID: 19603112, 11004567).

Bemerkenswerte Veröffentlichungen

Verfasser	Pubmed ID	Journal	Anwendung
Xixi Guo	31480692	Biomolecules	WB
Rongkun Li	34836938	Cell Death Dis	WB
Zhiyong Zhang	36384075	Int Immunopharmacol	WB

Lagerung

Lagerungsbedingungen:
Bei -20°C lagern. Nach dem Versand ein Jahr lang stabil

Lagerungspuffer:
PBS mit 0.02% Natriumazid und 50% Glycerin pH 7.3.

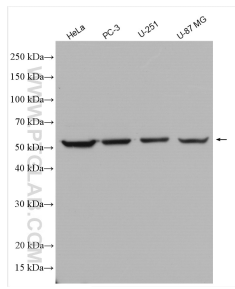
Aliquotieren ist nicht notwendig bei -20°C Lagerung

*** 20ul-Größen enthalten 0.1% BSA

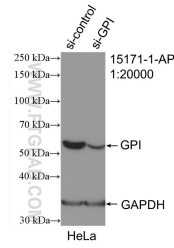
For technical support and original validation data for this product please contact:
 T: 1 (888) 4PTGLAB (1-888-478-4522) (toll free in USA), or 1(312) 455-8498 (outside USA)
 E: proteintech@ptglab.com
 W: ptglab.com

This product is exclusively available under Proteintech Group brand and is not available to purchase from any other manufacturer.

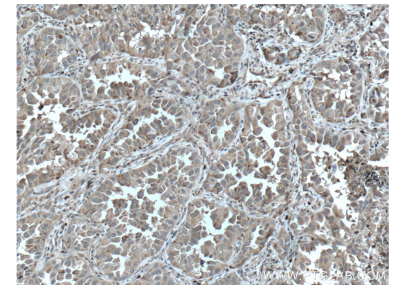
Ausgewählte Validierungsdaten



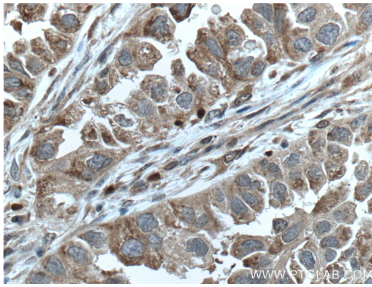
Various lysates were subjected to SDS PAGE followed by western blot with 15171-1-AP (GPI antibody) at dilution of 1:1000 incubated at room temperature for 1.5 hours.



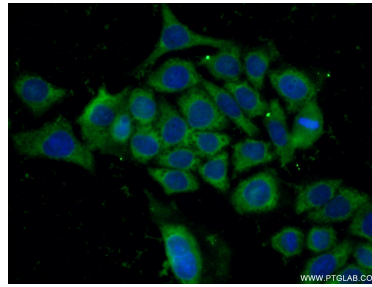
WB result of GPI antibody (15171-1-AP; 1:20000; incubated at room temperature for 1.5 hours) with sh-Control and sh-GPI transfected HeLa cells.



Immunohistochemical analysis of paraffin-embedded human lung cancer tissue slide using 15171-1-AP (GPI Antibody) at dilution of 1:200 (under 10x lens). Heat mediated antigen retrieval with Tris-EDTA buffer (pH 9.0).



Immunohistochemical analysis of paraffin-embedded human lung cancer tissue slide using 15171-1-AP (GPI Antibody) at dilution of 1:200 (under 40x lens). Heat mediated antigen retrieval with Tris-EDTA buffer (pH 9.0).



Immunofluorescent analysis of (-20°C Ethanol) fixed PC-3 cells using 15171-1-AP (GPI antibody) at dilution of 1:50 and Alexa Fluor 488-conjugated AffiniPure Goat Anti-Rabbit IgG(H+L).