

Nur für Forschungszwecke

Gamma Tubulin Polyklonaler Antikörper



Katalog-Nr.:15176-1-AP

16 Publikationen

Allgemeine Informationen

Katalog-Nr.: 15176-1-AP	GenBank-Zugangsnummer: BC000619	Reinigungsmethode: Antigen-Affinitätsreinigung
Größe: 150ul , Konzentration: 700 µg/ml von Nanodrop;	GeneID (NCBI): 7283	Empfohlene Verdünnungen: WB 1:500-1:1000 IP 0.5-4.0 ug für IP und 1:1000-1:4000 für WB
Wirt: Kaninchen	Vollständiger Name: tubulin, gamma 1	IHC 1:50-1:500 IF 1:50-1:200
Isotyp: IgG	Berechnete Masse: 51 kDa	
Immunogen Katalognummer: AG7070	Beobachtete Masse: 50-55 kDa	

Anwendungen

Geprüfte Anwendungen:
FC, IF, IHC, IP, WB, ELISA

In Publikationen genannte Anwendungen:
IF, IHC, WB

Getestete Reaktivität:
Human, Hund, Maus, Ratte

Zitierte Arten:
Human, Maus

Hinweis-IHC: Antigenmaskierung mit TE-Puffer pH 9,0 empfohlen. (*) Wahlweise kann die Antigenmaskierung auch mit Citratpuffer pH 6,0 erfolgen.

Positivkontrollen:

WB : HeLa-Zellen, Transfizierte HEK-293-Zellen

IP : HeLa-Zellen,

IHC : humanes Prostatakarzinomgewebe, humanes Prostatahyperplasie-Gewebe

IF : hTERT-RPE-Zellen, hTERT-RPE-Zellen, HUVEC-Zellen, MDCK-Zellen

Hintergrundinformationen

Gamma tubulin is a member of tubulin superfamily and is a key component required for microtubule nucleation and stabilization. It is concentrated at the pericentriolar material of centrosomes in interphase cells, predominantly on spindle poles in mitotic cells, while found in midbodies during cytokinesis. Overexpression of gamma tubulin has been found in various cancers including breast cancer and gliomas. This antibody can well label the centrosome structure.

Bemerkenswerte Veröffentlichungen

Verfasser	Pubmed ID	Journal	Anwendung
Lauren G. Mascibroda	36229431	Nat Commun	IF, WB
Suchismita Panda	30296263	PLoS Biol	IF
Ramona Jühlen	33168876	Sci Rep	IF

Lagerung

Lagerungsbedingungen:

Bei -20°C lagern. Nach dem Versand ein Jahr lang stabil

Lagerungspuffer:

PBS mit 0.02% Natriumazid und 50% Glycerin pH 7.3.

Aliquotieren ist nicht notwendig bei -20°C Lagerung

*** 20ul-Größen enthalten 0.1% BSA

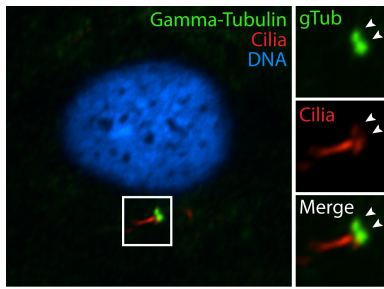
For technical support and original validation data for this product please contact:

T: 1 (888) 4PTGLAB (1-888-478-4522) (toll free in USA), or 1(312) 455-8498 (outside USA)

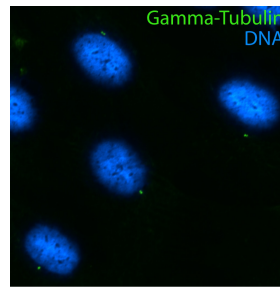
E: proteintech@ptglab.com
W: ptglab.com

This product is exclusively available under Proteintech Group brand and is not available to purchase from any other manufacturer.

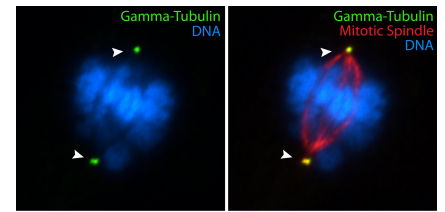
Ausgewählte Validierungsdaten



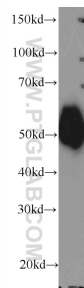
IF results of gamma tubulin antibody (15176-1-AP, 1:100) with hTERT-RPE cells by Moshe Kim (laboratory of Dr. William S Trimble, University of Toronto). Cells were fixed in ice-cold methanol.



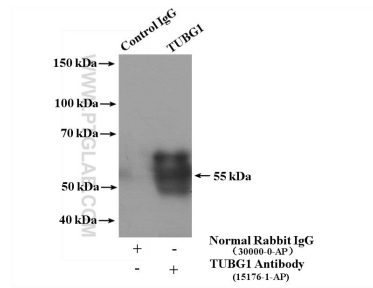
IF results of gamma tubulin antibody (15176-1-AP, 1:100) with hTERT-RPE cells by Moshe Kim (laboratory of Dr. William S Trimble, University of Toronto). Cells were fixed in ice-cold methanol.



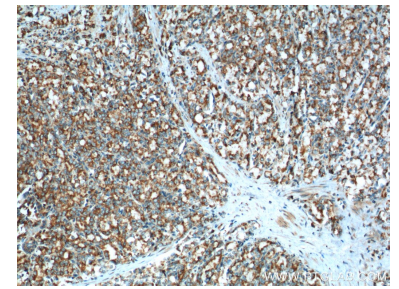
IF results of gamma tubulin antibody (15176-1-AP, 1:100) with hTERT-RPE cells by Moshe Kim (laboratory of Dr. William S Trimble, University of Toronto). Cells were fixed in ice-cold methanol.



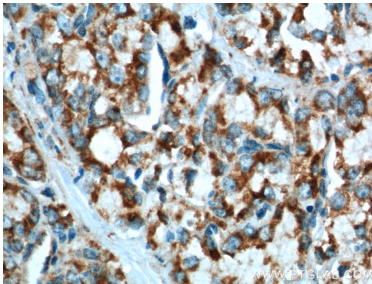
HeLa cells were subjected to SDS PAGE followed by western blot with 15176-1-AP (gamma Tubulin antibody at dilution of 1:600 incubated at room temperature for 1.5 hours.



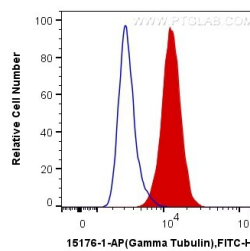
IP Result of anti-gamma Tubulin (IP:15176-1-AP, 4ug; Detection:15176-1-AP 1:2000) with HeLa cells lysate 1600ug.



Immunohistochemical analysis of paraffin-embedded human prostate cancer tissue slide using 15176-1-AP (gamma Tubulin antibody at dilution of 1:200 (under 10x lens). Heat mediated antigen retrieval with Tris-EDTA buffer (pH 9.0).



Immunohistochemical analysis of paraffin-embedded human prostate cancer tissue slide using 15176-1-AP (gamma Tubulin antibody at dilution of 1:200 (under 40x lens). Heat mediated antigen retrieval with Tris-EDTA buffer (pH 9.0).



1X10⁶ HeLa cells were intracellularly stained with 0.4 ug Anti-Human Gamma Tubulin (15176-1-AP) and CoraLite®488-Conjugated AffiniPure Goat Anti-Rabbit IgG(H+L) at dilution 1:1000 (red), or 0.4 ug Control Antibody. Cells were fixed with 4% PFA and permeabilized with Flow Cytometry Perm Buffer (PF00011-C).