

Nur für Forschungszwecke

# CPT1A Polyklonaler Antikörper

Katalog-Nr.:15184-1-AP

Vorgestelltes Produkt

251 Publikationen



## Allgemeine Informationen

Katalog-Nr.:  
15184-1-AP

Größe:  
150ul, Konzentration: 333 µg/ml  
durch die Bradford-Methode mit BSA  
als Standard;

Wirt:  
Kaninchen

Isotyp:  
IgG

Immunogen Katalognummer:  
AG7202

GenBank-Zugangsnummer:  
BC000185

GeneID (NCBI):  
1374

Vollständiger Name:  
carnitine palmitoyltransferase 1A  
(Liver)

Berechnete Masse:  
88 kDa

Beobachtete Masse:  
86 kDa

Reinigungsmethode:

Antigen-Affinitätsreinigung

Empfohlene Verdünnungen:

WB 1:5000-1:50000

IP 0.5-4.0 µg für IP und 1:500-1:2000  
für WB

IHC 1:500-1:2000

IF 1:50-1:500

## Anwendungen

Geprüfte Anwendungen:

FC, IF, IHC, IP, WB, ELISA

In Publikationen genannte Anwendungen:

FC, IF, IHC, IP, WB

Getestete Reaktivität:

Human, Maus, Ratte

Zitierte Arten:

Ente, Hausschwein, Human, Maus, Ratte, Rind,  
Zebrafisch

**Hinweis-IHC: Antigendemaskierung mit TE-  
Puffer pH 9,0 empfohlen. (\*) Wahlweise  
kann die Antigendemaskierung auch mit  
Citratpuffer pH 6,0 erfolgen.**

Positivkontrollen:

WB : HeLa-Zellen, A549-Zellen, HepG2-Zellen,  
Maushirngewebe, Mauslebergewebe,  
Mauslungengewebe, MCF-7-Zellen, Rattenhirngewebe,  
Rattenlebergewebe, Rattenlungengewebe, U-251-  
Zellen

IP : HepG2-Zellen,

IHC : humanes Leberkarzinomgewebe,  
Maushirngewebe

IF : HepG2-Zellen,

## Hintergrundinformationen

CPT1A, also named as CPT1, CPT1-L and L-CPTI, belongs to the carnitine/choline acetyltransferase family. It is localized Chromosome 11q13.1-2. Carnitine palmitoyltransferase (CPT) deficiencies are common disorders of mitochondrial fatty acid oxidation. The CPT system is made up of two separate proteins located in the outer (CPT1) and inner (CPT2) mitochondrial membranes. CPT1A is an active forms of related liver-type carnitine palmitoyltransferase I. (PMID: 11001805). CPT1A deficiency presents as recurrent attacks of fasting hypoketotic hypoglycemia. (PMID: 15363638). This antibody can bind the close sequences genes.

## Bemerkenswerte Veröffentlichungen

Verfasser	Pubmed ID	Journal	Anwendung
Katherine Labbé	34586346	J Cell Biol	WB
Dan Xu	28970281	Diabetes	WB
Binbin Zhou	36169888	Mol Neurobiol	WB

## Lagerung

Lagerungsbedingungen:

Bei -20°C lagern. Nach dem Versand ein Jahr lang stabil

Lagerungspuffer:

PBS mit 0.02% Natriumazid und 50% Glycerin pH 7.3.

Aliquotieren ist nicht notwendig bei -20°C Lagerung

\*\*\* 20ul-Größen enthalten 0.1% BSA

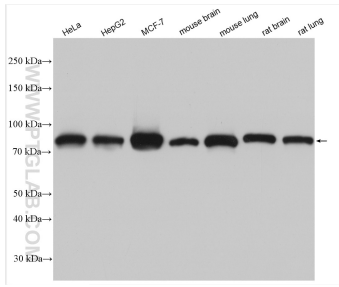
For technical support and original validation data for this product please contact:

T: 1 (888) 4PTGLAB (1-888-478-4522) (toll free  
in USA), or 1(312) 455-8498 (outside USA)

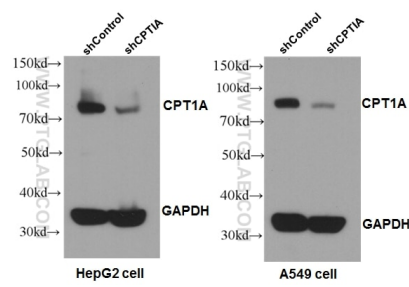
E: proteintech@ptglab.com  
W: ptglab.com

This product is exclusively available under Proteintech Group brand and is not available to purchase from any other manufacturer.

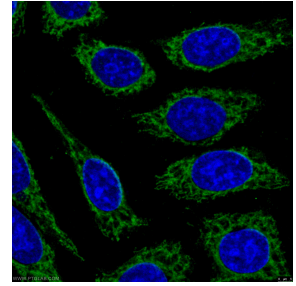
## Ausgewählte Validierungsdaten



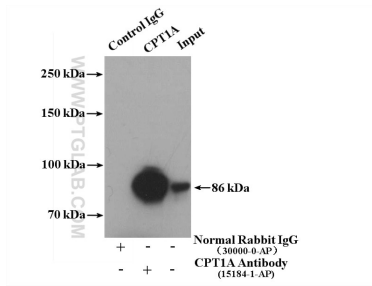
Various lysates were subjected to SDS PAGE followed by western blot with 15184-1-AP (CPT1A antibody) at dilution of 1:10000 incubated at room temperature for 1.5 hours.



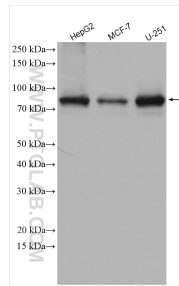
WB results of CPT1A antibody (1:1000) with shCPT1A-A549 and shCPT1A-HepG2 cells. shControl-A549 and shControl-HepG2 as positive control.



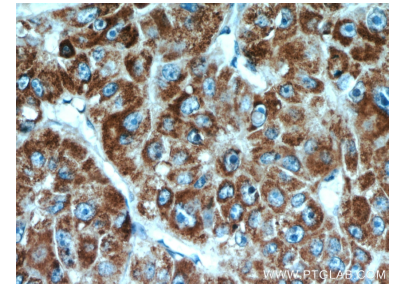
Immunofluorescent analysis of (-20°C Ethanol) fixed HepG2 cells using 15184-1-AP (CPT1A antibody) at dilution of 1:50 and Alexa Fluor 488-Conjugated AffiniPure Goat Anti-Rabbit IgG(H+L).



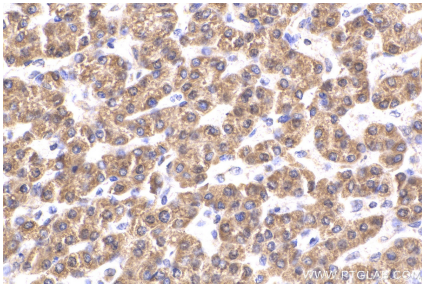
IP result of anti-CPT1A (IP:15184-1-AP, 4ug; Detection:15184-1-AP 1:1000) with HepG2 cells lysate 3000 ug.



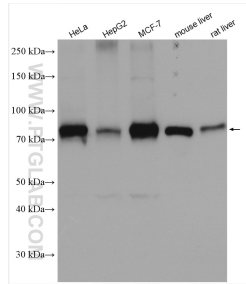
Various lysates were subjected to SDS PAGE followed by western blot with 15184-1-AP (CPT1A antibody) at dilution of 1:1000 incubated at room temperature for 1.5 hours.



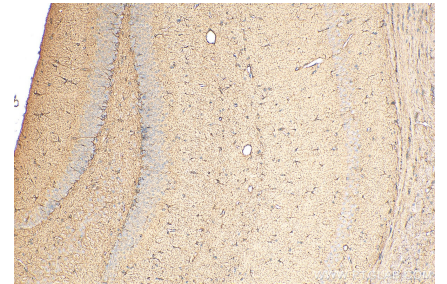
Immunohistochemical analysis of paraffin-embedded human liver cancer using 15184-1-AP (CPT1A antibody) at dilution of 1:100 (under 40x lens).



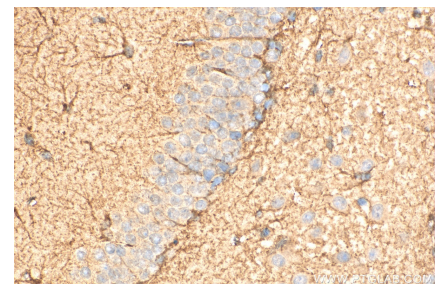
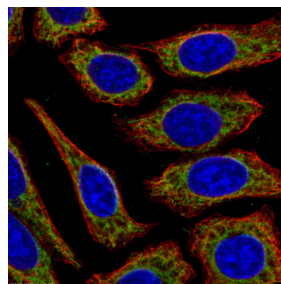
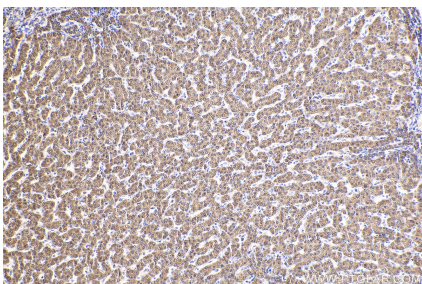
Immunohistochemical analysis of paraffin-embedded human liver cancer tissue slide using 15184-1-AP (CPT1A antibody) at dilution of 1:1000 (under 40x lens). Heat mediated antigen retrieval with Tris-EDTA buffer (pH 9.0).



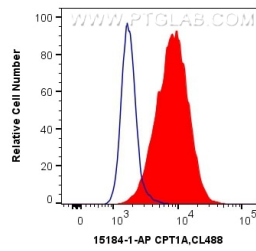
Various lysates were subjected to SDS PAGE followed by western blot with 15184-1-AP (CPT1A antibody) at dilution of 1:10000 incubated at room temperature for 1.5 hours.



Immunohistochemical analysis of paraffin-embedded mouse brain tissue slide using 15184-1-AP (CPT1A antibody) at dilution of 1:1000 (under 10x lens). Heat mediated antigen retrieval with Tris-EDTA buffer (pH 9.0).



Immunohistochemical analysis of paraffin-embedded human liver cancer tissue slide using 15184-1-AP (CPT1A antibody) at dilution of 1:1000 (under 10x lens). Heat mediated antigen retrieval with Tris-EDTA buffer (pH 9.0).



1X10<sup>6</sup> HeLa cells were intracellularly stained with 0.4 ug Anti-Human CPT1A (15184-1-AP) and CoraLite®488-Conjugated AffiniPure Goat Anti-Rabbit IgG(H+L) at dilution 1:1000 (red), or 0.4 ug Control Antibody. Cells were fixed with 4% PFA and permeabilized with Flow Cytometry Perm Buffer (PF00011-C).

Immunofluorescent analysis of -20°C Ethanol fixed HepG2 cells stained for CPT1A rabbit pAb (15184-1-AP) and KRT18 mouse mAb (66187-1-Ig) at dilution of 1:50, further stained with Alexa Fluor 488-Conjugated AffiniPure Goat Anti-Rabbit IgG(H+L) for 15184-1-AP, and Alexa Fluor 594-conjugated AffiniPure Goat Anti-Mouse IgG (H+L) for 66187-1-Ig.

Immunohistochemical analysis of paraffin-embedded mouse brain tissue slide using 15184-1-AP (CPT1A antibody) at dilution of 1:1000 (under 40x lens). Heat mediated antigen retrieval with Tris-EDTA buffer (pH 9.0).