

Allgemeine Informationen

Katalog-Nr.: 15202-1-AP	GenBank-Zugangsnummer: BC004978	Reinigungsmethode: Antigen-Affinitätsreinigung
Größe: 150ul , Konzentration: 500 µg/ml von Nanodrop;	GeneID (NCBI): 10155	Empfohlene Verdünnungen: WB 1:1000-1:4000
Wirt: Kaninchen	Vollständiger Name: tripartite motif-containing 28	IP 0.5-4.0 ug für IP und 1:500-1:2000 für WB
Isotyp: IgG	Berechnete Masse: 89 kDa	IHC 1:20-1:200
Immunogen Katalognummer: AG7350	Beobachtete Masse: 100 kDa	IF 1:10-1:100

Anwendungen

Geprüfte Anwendungen:
FC, IF, IHC, IP, WB, ELISA

In Publikationen genannte Anwendungen:
chIP, IF, IHC, IP, WB

Getestete Reaktivität:
Human, Maus, Ratte

Zitierte Arten:
Human, Maus

Positivkontrollen:

WB: HeLa-Zellen, Maushodengewebe, Rattenmilzgewebe

IP: HeLa-Zellen,

IHC: humanes Kolonkarzinomgewebe,

IF: HeLa-Zellen,

Hinweis-IHC: Antigenmaskierung mit TE-Puffer pH 9,0 empfohlen. (*) Wahlweise kann die Antigenmaskierung auch mit Citratpuffer pH 6,0 erfolgen.

Hintergrundinformationen

KAP1, also named as TRIM28 or RNF96, is a 835 amino acid protein, which contain one RING-type zinc finger, one PHD-type zinc finger, one bromo domain and two B box-type zinc fingers. KAP1 localizes in the nucleus and belongs to the TRIM/RBCC family. KAP1 is a nuclear corepressor for KRAB domain-containing zinc finger proteins and mediates gene silencing by recruiting CHD3, a subunit of the nucleosome remodeling and deacetylation (NuRD) complex, and SETDB1 to the promoter regions of KRAB target genes. KAP1 is expressed in all tissues tested including spleen, thymus, prostate, testis, ovary, small intestine, colon and peripheral blood leukocytes. The calculated molecular weight of KAP1 is 89 kDa, but modified KAP1 is about 100 kDa. (PMID: 18590578)

Bemerkenswerte Veröffentlichungen

Verfasser	Pubmed ID	Journal	Anwendung
Yaguang Zhang	36100837	Sci China Life Sci	WB
Min Li	32900933	Proc Natl Acad Sci U S A	chIP
Yanhui Zhai	33539314	Reproduction	IF

Lagerung

Lagerungsbedingungen:

Bei -20°C lagern. Nach dem Versand ein Jahr lang stabil

Lagerungspuffer:

PBS mit 0.02% Natriumazid und 50% Glycerin pH 7.3.

Aliquotieren ist nicht notwendig bei -20°C Lagerung

***** 20ul-Größen enthalten 0.1% BSA**

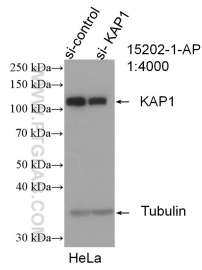
For technical support and original validation data for this product please contact:

T: 1 (888) 4PTGLAB (1-888-478-4522) (toll free in USA), or 1(312) 455-8498 (outside USA)

E: proteintech@ptglab.com
W: ptglab.com

This product is exclusively available under Proteintech Group brand and is not available to purchase from any other manufacturer.

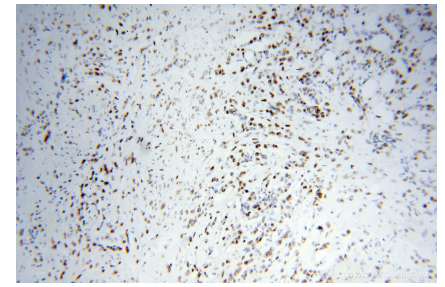
Ausgewählte Validierungsdaten



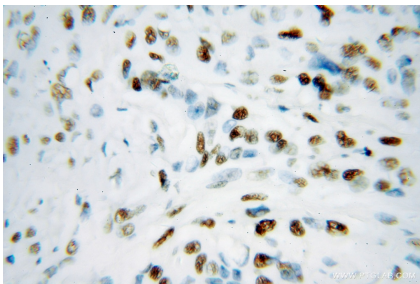
WB result of KAP1 antibody (15202-1-AP; 1:4000; incubated at room temperature for 1.5 hours) with sh-Control and sh-KAP1 transfected HeLa cells.



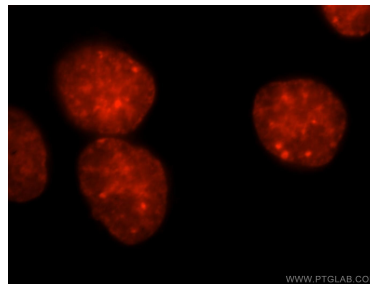
HeLa cells were subjected to SDS PAGE followed by western blot with 15202-1-AP (KAP1 antibody) at dilution of 1:3000 incubated at room temperature for 1.5 hours.



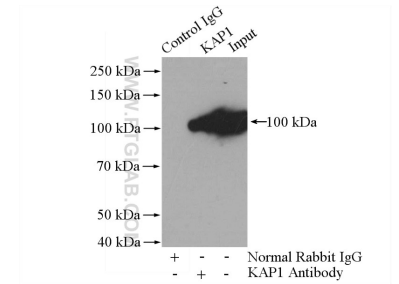
Immunohistochemical analysis of paraffin-embedded human colon cancer using 15202-1-AP (KAP1 antibody) at dilution of 1:100 (under 10x lens).



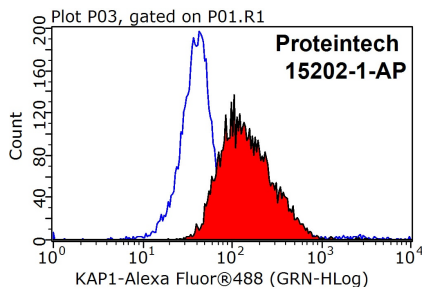
Immunohistochemical analysis of paraffin-embedded human colon cancer using 15202-1-AP (KAP1 antibody) at dilution of 1:100 (under 40x lens).



Immunofluorescent analysis of HeLa cells, using TRIM28 antibody 15202-1-AP at 1:25 dilution and Rhodamine-labeled goat anti-rabbit IgG (red).



IP Result of anti-KAP1 (IP:15202-1-AP, 4ug; Detection:15202-1-AP 1:1000) with HeLa cells lysate 1200ug.



1×10^6 HeLa cells were stained with 0.2ug KAP1 antibody (15202-1-AP, red) and control antibody (blue). Fixed with 90% MeOH blocked with 3% BSA (30 min). Alexa Fluor 488-conjugated AffiniPure Goat Anti-Rabbit IgG(H+L) with dilution 1:1000.