

Nur für Forschungszwecke

PSMA7 Polyklonaler Antikörper

Katalog-Nr.:15219-1-AP

Vorgestelltes Produkt

9 Publikationen



Allgemeine Informationen

Katalog-Nr.:

15219-1-AP

Größe:

150ul , Konzentration: 450 µg/ml von Nanodrop und 187 µg/ml durch die Bradford-Methode mit BSA als Standard;

Wirt:

Kaninchen

Isotyp:

IgG

Immunogen Katalognummer:

AG7389

GenBank-Zugangsnummer:

BC004427

GeneID (NCBI):

5688

Vollständiger Name:

proteasome (prosome, macropain) subunit, alpha type, 7

Berechnete Masse:

28 kDa

Beobachtete Masse:

28-30 kDa

Reinigungsmethode:

Antigen-Affinitätsreinigung

Empfohlene Verdünnungen:

WB 1:3000-1:15000
IP 0.5-4.0 ug für IP und 1:500-1:1000 für WB
IHC 1:200-1:1000
IF 1:20-1:200

Anwendungen

Geprüfte Anwendungen:

FC, IF, IHC, IP, WB, ELISA

In Publikationen genannte Anwendungen:

WB

Getestete Reaktivität:

Human, Maus, Ratte

Zitierte Arten:

Human, Maus, Ratte

Hinweis-IHC: Antigendemaskierung mit TE-Puffer pH 9,0 empfohlen. (*) Wahlweise kann die Antigendemaskierung auch mit Citratpuffer pH 6,0 erfolgen.

Positivkontrollen:

WB : HepG2-Zellen, HeLa-Zellen

IP : Maushirngewebe,

IHC : humanes Leberkarzinomgewebe,

IF : HeLa-Zellen,

Hintergrundinformationen

PSMA7(Proteasome subunit alpha type-7) is also named HSPC and belongs to the peptidase T1A family. It is an α -type subunit of the 20S proteasome core complex and participates in degrading proteins through the ubiquitin-proteasome pathway (UPP) which plays an important role in the regulation of cell proliferation or cell cycle control, transcriptional regulation, immune and stress response, cell differentiation, and apoptosis(PMID: 19442227).

Bemerkenswerte Veröffentlichungen

Verfasser	Pubmed ID	Journal	Anwendung
Jordan J S VerPlank	29076578	Glia	WB
Han Wu	32450067	Exp Cell Res	WB
Yang Liuzhong L	23839082	Cell Physiol Biochem	WB

Lagerung

Lagerungsbedingungen:

Bei -20°C lagern. Nach dem Versand ein Jahr lang stabil

Lagerungspuffer:

PBS mit 0.02% Natriumazid und 50% Glycerin pH 7.3.

Aliquotieren ist nicht notwendig bei -20°C Lagerung

*** 20ul-Größen enthalten 0.1% BSA

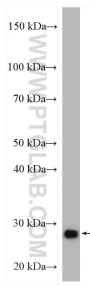
For technical support and original validation data for this product please contact:

T: 1 (888) 4PTGLAB (1-888-478-4522) (toll free in USA), or 1(312) 455-8498 (outside USA)

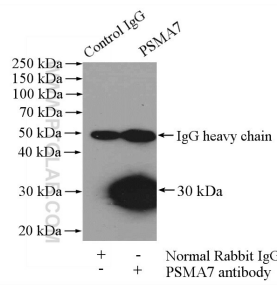
E: proteintech@ptglab.com
W: ptglab.com

This product is exclusively available under Proteintech Group brand and is not available to purchase from any other manufacturer.

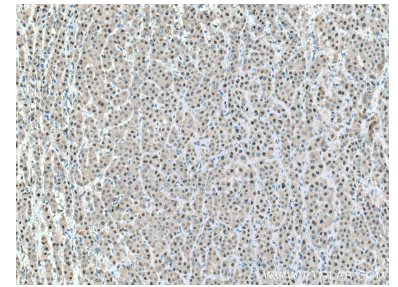
Ausgewählte Validierungsdaten



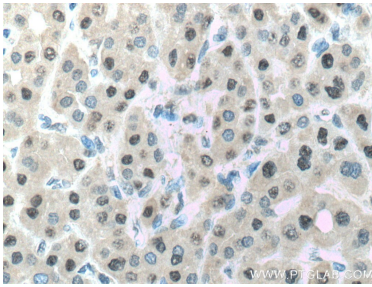
HepG2 cells were subjected to SDS PAGE followed by western blot with 15219-1-AP (PSMA7 antibody) at dilution of 1:8000 incubated at room temperature for 1.5 hours.



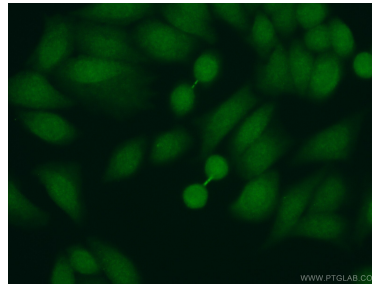
IP Result of anti-PSMA7 (IP:15219-1-AP, 4ug; Detection:15219-1-AP 1:500) with mouse brain tissue lysate 4000ug.



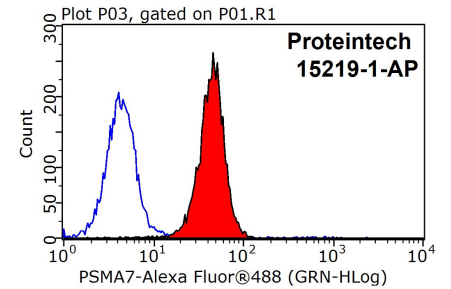
Immunohistochemical analysis of paraffin-embedded human liver cancer tissue slide using 15219-1-AP (PSMA7 antibody) at dilution of 1:1000 (under 10x lens. Heat mediated antigen retrieval with Tris-EDTA buffer (pH 9.0).



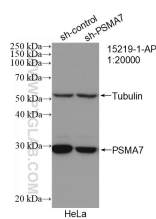
Immunohistochemical analysis of paraffin-embedded human liver cancer tissue slide using 15219-1-AP (PSMA7 antibody) at dilution of 1:1000 (under 40x lens. Heat mediated antigen retrieval with Tris-EDTA buffer (pH 9.0).



Immunofluorescent analysis of (10% Formaldehyde) fixed HeLa cells using 15219-1-AP (PSMA7 antibody) at dilution of 1:50 and Alexa Fluor 488-conjugated AffiniPure Goat Anti-Rabbit IgG(H+L).



1X10⁶ HepG2 cells were stained with 0.2ug PSMA7 antibody (15219-1-AP, red) and control antibody (blue). Fixed with 90% MeOH blocked with 3% BSA (30 min). Alexa Fluor 488-conjugated AffiniPure Goat Anti-Rabbit IgG(H+L) with dilution 1:1500.



WB result of PSMA7 antibody (15219-1-AP; 1:20000; incubated at room temperature for 1.5 hours) with sh-Control and sh-PSMA7 transfected HeLa cells.