

Nur für Forschungszwecke

HSP60 Polyklonaler Antikörper

Katalog-Nr.:15282-1-AP

Vorgestelltes Produkt

95 Publikationen



Allgemeine Informationen

Katalog-Nr.: 15282-1-AP	GenBank-Zugangsnummer: BC003030	Reinigungsmethode: Antigen-Affinitätsreinigung
Größe: 150ul, Konzentration: 1000 µg/ml von3329 Nanodrop;	GeneID (NCBI): Vollständiger Name: heat shock 60kDa protein 1 (chaperonin)	Empfohlene Verdünnungen: WB 1:2000-1:16000 IP 0.5-4.0 ug für IP und 1:5000-1:50000 für WB IHC 1:50-1:500 IF 1:50-1:500
Wirt: Kaninchen	Berechnete Masse: 61 kDa	
Isotyp: IgG	Beobachtete Masse: 60 kDa	
Immunogen Katalognummer: AG7401		

Anwendungen

Geprüfte Anwendungen: FC, IF, IHC, IP, WB, ELISA	Positivkontrollen: WB : HEK-293-Zellen, HepG2-Zellen, NIH/3T3-Zellen IP : HEK-293-Zellen, IHC : humanes Lungenkarzinomgewebe, IF : HeLa-Zellen,
In Publikationen genannte Anwendungen: CoIP, ELISA, IF, IHC, IP, WB	
Getestete Reaktivität: Human, Maus, Ratte	
Zitierte Arten: Fisch, Hausschwein, Huhn, Human, Maus, Ratte, Reis, Rind	
Hinweis-IHC: Antigenmaskierung mit TE-Puffer pH 9,0 empfohlen. (*) Wahlweise kann die Antigenmaskierung auch mit Citratpuffer pH 6,0 erfolgen.	

Hintergrundinformationen

HSPD1, also known as HSP60, belongs to the chaperonin family and acts as a chaperone to enhance cell survival under physiological stresses. Hsp60 has been shown to be connected with many aspects of cell functions such as protein folding and assembling of polypeptide chains in mitochondria. Recently it has been reported that HSP60 is associated with apoptosis or inhibition of cancer cell growth. (21822415)

Bemerkenswerte Veröffentlichungen

Verfasser	Pubmed ID	Journal	Anwendung
Beiwu Lan	36116558	Exp Cell Res	WB
Jianli Tang	36106732	mBio	WB,IF,IP
Panayotis Pachnis	36044570	Sci Adv	WB

Lagerung

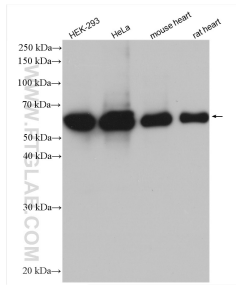
Lagerungsbedingungen:
Bei -20°C lagern. Nach dem Versand ein Jahr lang stabil
Lagerungspuffer:
PBS mit 0.02% Natriumazid und 50% Glycerin pH 7.3.
Aliquotieren ist nicht notwendig bei -20°C Lagerung

*** 20ul-Größen enthalten 0.1% BSA

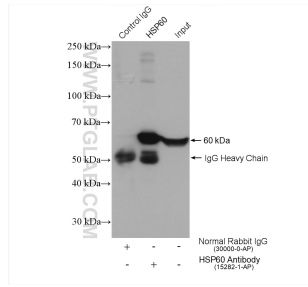
For technical support and original validation data for this product please contact:
T: 1 (888) 4PTGLAB (1-888-478-4522) (toll free in USA), or 1(312) 455-8498 (outside USA)
E: proteintech@ptglab.com
W: ptglab.com

This product is exclusively available under Proteintech Group brand and is not available to purchase from any other manufacturer.

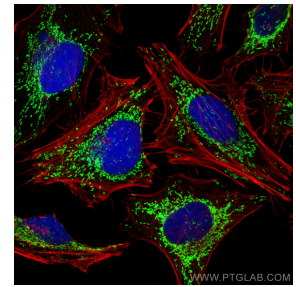
Ausgewählte Validierungsdaten



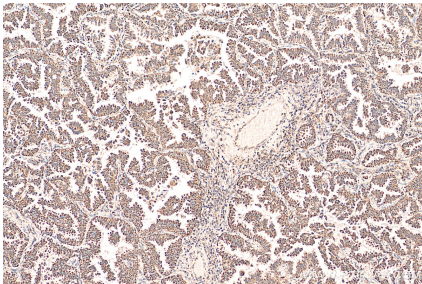
Various lysates were subjected to SDS PAGE followed by western blot with 15282-1-AP (HSP60 antibody) at dilution of 1:8000 incubated at room temperature for 1.5 hours.



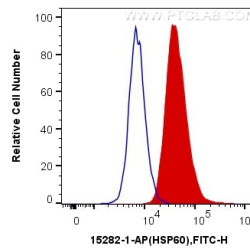
IP result of anti-HSP60(IP:15282-1-AP, 4ug; Detection:15282-1-AP 1:10000) with HEK-293 cells lysate 1800 ug.



Immunofluorescent analysis of (4% PFA) fixed HeLa cells using HSP60 antibody (15282-1-AP) at dilution of 1:200 and CoraLite®488-Conjugated AffiniPure Goat Anti-Rabbit IgG(H+L), (CL594-Phalloidin, red).



Immunohistochemical analysis of paraffin-embedded human lung cancer tissue slide using 15282-1-AP (HSP60 antibody) at dilution of 1:200 (under 10x lens). Heat mediated antigen retrieval with Tris-EDTA buffer (pH 9.0).



1X10⁶ HepG2 cells were intracellularly stained with 0.4 ug Anti-Human HSP60 (15282-1-AP) and CoraLite®488-Conjugated AffiniPure Goat Anti-Rabbit IgG(H+L) at dilution 1:1000 (red), or 0.4 ug x. Cells were fixed with 4% PFA and permeabilized with Flow Cytometry Perm Buffer (PF00011-C).