

Allgemeine Informationen

Katalog-Nr.: 15310-1-AP	GenBank-Zugangsnummer: BC002967	Reinigungsmethode: Antigen-Affinitätsreinigung
Größe: 150ul , Konzentration: 500 µg/ml von Nanodrop;	GeneID (NCBI): 217	Empfohlene Verdünnungen: WB 1:5000-1:50000 IP 0.5-4.0 ug für IP und 1:500-1:2000 für WB
Wirt: Kaninchen	Vollständiger Name: aldehyde dehydrogenase 2 family (mitochondrial)	IHC 1:50-1:500 IF 1:500-1:2000
Isotyp: IgG	Berechnete Masse: 56 kDa	
Immunogen Katalognummer: AG7452	Beobachtete Masse: 50-55 kDa	

Anwendungen

Geprüfte Anwendungen:

IF, IHC, IP, WB, ELISA

In Publikationen genannte Anwendungen:

CoIP, IF, IHC, IP, WB

Getestete Reaktivität:

Human, Maus, Ratte

Zitierte Arten:

Hausschwein, Human, Maus, Ratte, Zebrafisch

Hinweis-IHC: Antigendemaskierung mit TE-Puffer pH 9,0 empfohlen. (*) Wahlweise kann die Antigendemaskierung auch mit Citratpuffer pH 6,0 erfolgen.

Positivkontrollen:

WB: K-562-Zellen, HEK-293-Zellen, HepG2-Zellen, HuH-7-Zellen, humanes Herzgewebe, Maushodengewebe, Mausnierengewebe, Rattenhodengewebe, Rattenlebergewebe, Rattennierengewebe

IP: Mauslungengewebe,

IHC: humanes Lebergewebe,

IF: A549-Zellen,

Hintergrundinformationen

Acetaldehyde dehydrogenase is the next enzyme after alcohol dehydrogenase in the major pathway of alcohol metabolism. It mediates NADP⁺-dependent oxidation of aldehydes into acids during detoxification of alcohol-derived acetaldehyde; lipid peroxidation; and metabolism of corticosteroids, biogenic amines and neurotransmitters. Genetic variation in ALDH2 is responsible for individual differences in responses to drinking alcohol. Thus, the absence of this enzyme is linked to alcohol intolerance and a reduced risk for alcoholism-related liver disease.

Bemerkenswerte Veröffentlichungen

Verfasser	Pubmed ID	Journal	Anwendung
Yusuke Amanuma	26374466	Sci Rep	WB
Xiaojuan Chao	34486131	Alcohol Clin Exp Res	WB
Shanshan Zhong	30375985	J Clin Invest	WB,IP,IF

Lagerung

Lagerungsbedingungen:

Bei -20°C lagern. Nach dem Versand ein Jahr lang stabil

Lagerungspuffer:

PBS mit 0.02% Natriumazid und 50% Glycerin pH 7.3.

Aliquotieren ist nicht notwendig bei -20°C Lagerung

***** 20ul-Größen enthalten 0.1% BSA**

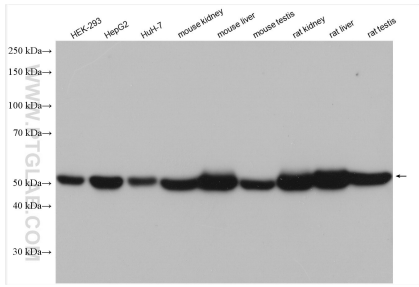
For technical support and original validation data for this product please contact:

T: 1 (888) 4PTGLAB (1-888-478-4522) (toll free in USA), or 1(312) 455-8498 (outside USA)

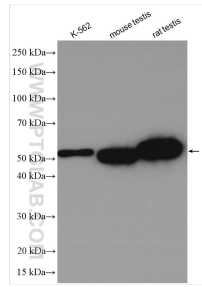
E: proteintech@ptglab.com
W: ptglab.com

This product is exclusively available under Proteintech Group brand and is not available to purchase from any other manufacturer.

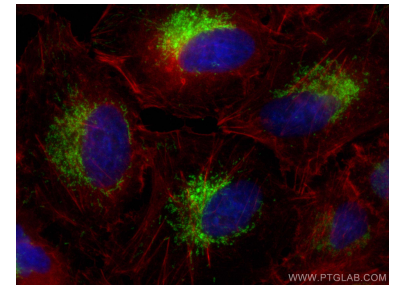
Ausgewählte Validierungsdaten



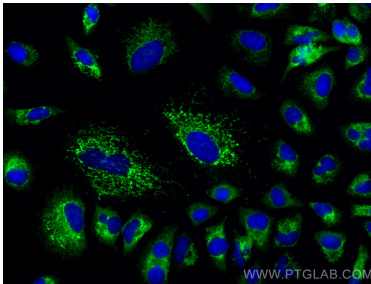
Various lysates were subjected to SDS PAGE followed by western blot with 15310-1-AP (ALDH2 antibody) at dilution of 1:8000 incubated at room temperature for 1.5 hours.



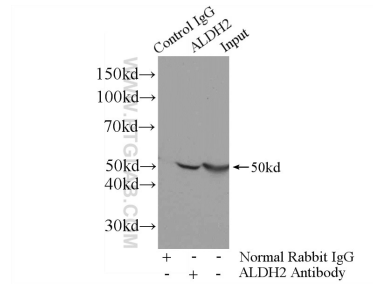
Various lysates were subjected to SDS PAGE followed by western blot with 15310-1-AP (ALDH2 antibody) at dilution of 1:10000 incubated at room temperature for 1.5 hours.



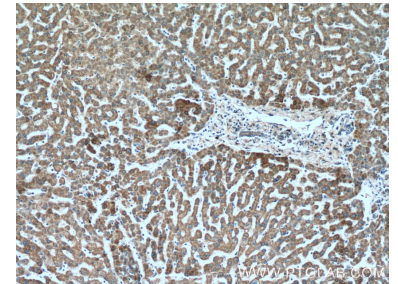
Immunofluorescent analysis of (4% PFA) fixed A549 cells using ALDH2 antibody (15310-1-AP) at dilution of 1:1000 and Coralite®488-Conjugated AffiniPure Goat Anti-Rabbit IgG(H+L), CL594-Phalloidin (red).



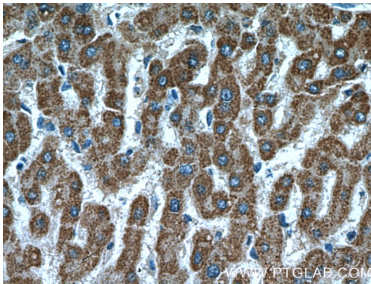
Immunofluorescent analysis of (-20°C Methanol) fixed A549 cells using ALDH2 antibody (15310-1-AP) at dilution of 1:400 and Coralite®488-Conjugated AffiniPure Goat Anti-Rabbit IgG(H+L).



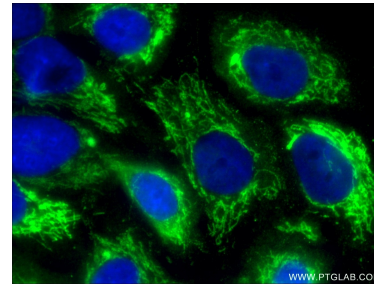
IP Result of anti-ALDH2 (IP:15310-1-AP, 4ug; Detection:15310-1-AP 1:1000) with mouse lung tissue lysate 2800ug.



Immunohistochemical analysis of paraffin-embedded human liver tissue slide using 15310-1-AP (ALDH2 Antibody) at dilution of 1:200 (under 10x lens).



Immunohistochemical analysis of paraffin-embedded human liver tissue slide using 15310-1-AP (ALDH2 Antibody) at dilution of 1:200 (under 40x lens).



Immunofluorescent analysis of (-20°C Ethanol) fixed A549 cells using 15310-1-AP (ALDH2 antibody) at dilution of 1:50 and Alexa Fluor 488-conjugated AffiniPure Goat Anti-Rabbit IgG(H+L).