

Nur für Forschungszwecke

# AP3S2 Polyklonaler Antikörper

Katalog-Nr.:15319-1-AP



## Allgemeine Informationen

<b>Katalog-Nr.:</b> 15319-1-AP	<b>GenBank-Zugangsnummer:</b> BC002785	<b>Reinigungsmethode:</b> Antigen-Affinitätsreinigung
<b>Größe:</b> 150ul , Konzentration: 500 µg/ml von Nanodrop;	<b>GeneID (NCBI):</b> 10239	<b>Empfohlene Verdünnungen:</b> WB 1:1000-1:6000 IHC 1:50-1:500
<b>Wirt:</b> Kaninchen	<b>Vollständiger Name:</b> adaptor-related protein complex 3, sigma 2 subunit	
<b>Isotyp:</b> IgG	<b>Berechnete Masse:</b> 22 kDa	
<b>Immunogen Katalognummer:</b> AG7565	<b>Beobachtete Masse:</b> 22 kDa	

## Anwendungen

### Geprüfte Anwendungen:

IHC, WB, ELISA

### Getestete Reaktivität:

Human, Maus, Ratte

**Hinweis-IHC: Antigendemaskierung mit TE-Puffer pH 9,0 empfohlen. (\*) Wahlweise kann die Antigendemaskierung auch mit Citratpuffer pH 6,0 erfolgen.**

### Positivkontrollen:

**WB** : Mauslebergewebe, humanes Hodengewebe, Maus-Eierstockgewebe, Maushodengewebe, Rattenlebergewebe

**IHC** : humanes Kolonkarzinomgewebe, humanes Ovarialkarzinomgewebe

## Hintergrundinformationen

AP3S2 is a 22-kDa protein that belongs to the adaptor complexes small subunit family. AP3S2 is a subunit of the AP-3 complex which is associated with the Golgi region as well as more peripheral structures. Adaptor protein (AP) complexes are cytosolic heterotetramers that mediate the sorting of membrane proteins in the secretory and endocytic pathways. AP-3 complex is composed of two large adaptins (AP3D1 and AP3B1 or AP3B2), a medium adaptin (AP3M1 or AP3M2) and a small adaptin (AP3S1 or AP3S2).

## Lagerung

### Lagerungsbedingungen:

Bei -20°C lagern. Nach dem Versand ein Jahr lang stabil

### Lagerungspuffer:

PBS mit 0.02% Natriumazid und 50% Glycerin pH 7.3.

Aliquotieren ist nicht notwendig bei -20°C Lagerung

**\*\*\* 20ul-Größen enthalten 0.1% BSA**

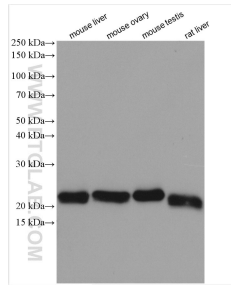
For technical support and original validation data for this product please contact:

T: 1 (888) 4PTGLAB (1-888-478-4522) (toll free in USA), or 1(312) 455-8498 (outside USA)

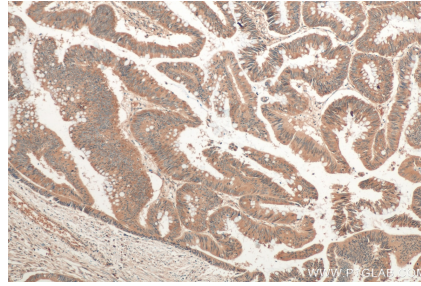
E: proteintech@ptglab.com  
W: ptglab.com

**This product is exclusively available under Proteintech Group brand and is not available to purchase from any other manufacturer.**

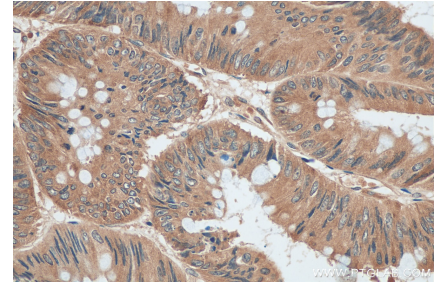
## Ausgewählte Validierungsdaten



Various lysates were subjected to SDS PAGE followed by western blot with 15319-1-AP (AP3S2 antibody) at dilution of 1:3000 incubated at room temperature for 1.5 hours.



Immunohistochemical analysis of paraffin-embedded human colon cancer tissue slide using 15319-1-AP (AP3S2 antibody) at dilution of 1:200 (under 10x lens). Heat mediated antigen retrieval with Tris-EDTA buffer (pH 9.0).



Immunohistochemical analysis of paraffin-embedded human colon cancer tissue slide using 15319-1-AP (AP3S2 antibody) at dilution of 1:200 (under 40x lens). Heat mediated antigen retrieval with Tris-EDTA buffer (pH 9.0).