

Nur für Forschungszwecke

CEL Polyklonaler Antikörper

Katalog-Nr.:15384-1-AP

Vorgestelltes Produkt

4 Publikationen



Allgemeine Informationen

Katalog-Nr.:
15384-1-AP

Größe:
150ul, Konzentration: 500 µg/ml von
Nanodrop und 233 µg/ml durch die
Bradford-Methode mit BSA als
Standard;

Wirt:
Kaninchen

Isotyp:
IgG

Immunogen Katalognummer:
AG5262

GenBank-Zugangsnummer:
BC042510

GeneID (NCBI):
1056

Vollständiger Name:
carboxyl ester lipase (bile salt-
stimulated lipase)

Berechnete Masse:
79 kDa

Beobachtete Masse:
67 kDa

Reinigungsmethode:

Antigen-Affinitätsreinigung

Empfohlene Verdünnungen:

WB 1:500-1:3000

IHC 1:50-1:500

IF 1:50-1:500

Anwendungen

Geprüfte Anwendungen:

IF, IHC, WB, ELISA

In Publikationen genannte Anwendungen:

IF, IHC, WB

Getestete Reaktivität:

Human, Maus, Ratte

Zitierte Arten:

Human, Maus

**Hinweis-IHC: Antigenmaskierung mit TE-
Puffer pH 9,0 empfohlen. (*) Wahlweise
kann die Antigenmaskierung auch mit
Citratpuffer pH 6,0 erfolgen.**

Positivkontrollen:

WB : humanes Lebergewebe, HeLa-Zellen,
Mausherzgewebe, Mauslebergewebe

IHC : humanes Pankreaskarzinomgewebe,

IF : humanes Pankreaskarzinomgewebe, HeLa-Zellen

Hintergrundinformationen

Bile salt-activated lipase, previously named cholesterol esterase or bile salt-stimulated (or dependent) lipase, is a 74 kDa lipolytic enzyme capable of hydrolyzing cholesteryl esters, tri-, di-, and mono-acylglycerols, phospholipids, lysophospholipids, and ceramide(PMID:12454261). The same enzyme is present as a major protein in milk and as a minor constituent in liver, activated macrophages, and endothelial cells(PMID:11733511). Defects in CEL are a cause of maturity-onset diabetes of the young type 8 with exocrine dysfunction (MODY8)(PMID:16369531). The full length protein has 11 glycosylation sites. It has 2 isoforms produced by alternative splicing.

Bemerkenswerte Veröffentlichungen

Verfasser	Pubmed ID	Journal	Anwendung
Minghe Zhou	34643375	ACS Biomater Sci Eng	WB,IF
Matthew J Kolar	27509211	Biochemistry	WB
Xiao-Tong Mao	35398595	Cell Mol Gastroenterol Hepatol	WB,IHC

Lagerung

Lagerungsbedingungen:

Bei -20°C lagern. Nach dem Versand ein Jahr lang stabil

Lagerungspuffer:

PBS mit 0.02% Natriumazid und 50% Glycerin pH 7.3.

Aliquotieren ist nicht notwendig bei -20°C Lagerung

*** 20ul-Größen enthalten 0.1% BSA

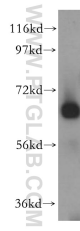
For technical support and original validation data for this product please contact:

T: 1 (888) 4PTGLAB (1-888-478-4522) (toll free
in USA), or 1(312) 455-8498 (outside USA)

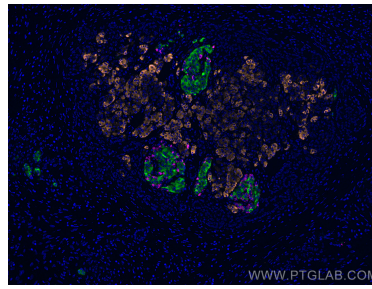
E: proteintech@ptglab.com
W: ptglab.com

This product is exclusively available under Proteintech Group brand and is not available to purchase from any other manufacturer.

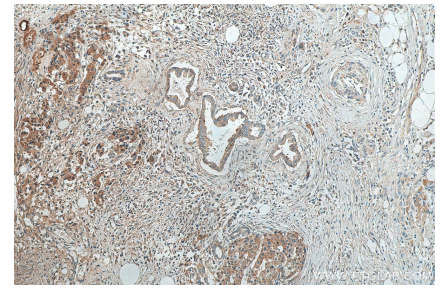
Ausgewählte Validierungsdaten



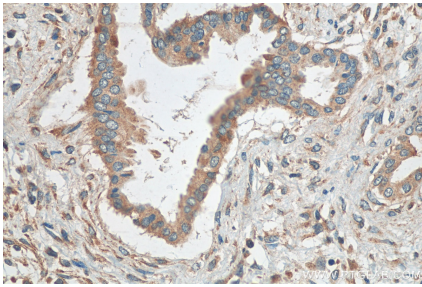
human liver tissue were subjected to SDS PAGE followed by western blot with 15384-1-AP (CEL antibody) at dilution of 1:500 incubated at room temperature for 1.5 hours.



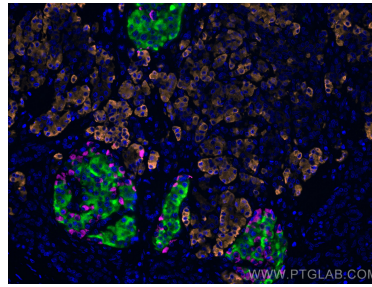
Immunofluorescent analysis of (4% PFA) fixed human pancreas cancer tissue using CEL antibody (15384-1-AP) at dilution of 1:200 and TRITC-Goat anti-Rabbit IgG, CoraLite® Plus 647 Glucagon antibody (CL647-15954, Magenta), CoraLite®488 INS antibody (CL488-66198, Clone: 4B6A7, green).



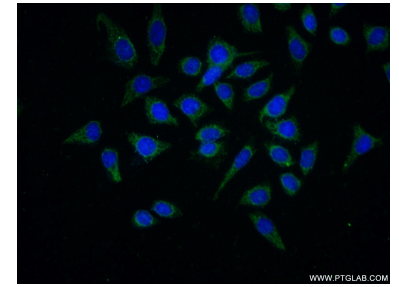
Immunohistochemical analysis of paraffin-embedded human pancreas cancer tissue slide using 15384-1-AP (CEL antibody) at dilution of 1:200 (under 10x lens). Heat mediated antigen retrieval with Tris-EDTA buffer (pH 9.0).



Immunohistochemical analysis of paraffin-embedded human pancreas cancer tissue slide using 15384-1-AP (CEL antibody) at dilution of 1:200 (under 40x lens). Heat mediated antigen retrieval with Tris-EDTA buffer (pH 9.0).



Immunofluorescent analysis of (4% PFA) fixed human pancreas cancer tissue using CEL antibody (15384-1-AP) at dilution of 1:200 and TRITC-Goat anti-Rabbit IgG, CoraLite® Plus 647 Glucagon antibody (CL647-15954, Magenta), CoraLite®488 INS antibody (CL488-66198, Clone: 4B6A7, green).



Immunofluorescent analysis of (-20°C Ethanol) fixed HeLa cells using 15384-1-AP (CEL antibody) at dilution of 1:25 and Alexa Fluor 488-conjugated AffiniPure Goat Anti-Rabbit IgG(H+L).