

Nur für Forschungszwecke

Connexin-43 Polyklonaler Antikörper



Katalog-Nr.:15386-1-AP

33 Publikationen

Allgemeine Informationen

Katalog-Nr.:

15386-1-AP

Größe:

150ul , Konzentration: 333 µg/ml durch die Bradford-Methode mit BSA als Standard;

Wirt:

Kaninchen

Isotyp:

IgG

Immunogen Katalognummer:

AG6698

GenBank-Zugangsnummer:

BC026329

GeneID (NCBI):

2697

Vollständiger Name:

gap junction protein, alpha 1, 43kDa

Berechnete Masse:

43 kDa

Beobachtete Masse:

43-47 kDa

Reinigungsmethode:

Antigen-Affinitätsreinigung

Empfohlene Verdünnungen:

WB 1:500-1:2000
IP 0.5-4.0 µg für IP und 1:500-1:1000 für WB
IHC 1:50-1:200
IF 1:50-1:500

Anwendungen

Geprüfte Anwendungen:

FC, IF, IHC, IP, WB,ELISA

In Publikationen genannte Anwendungen:

CoIP, IF, IHC, IP, WB

Getestete Reaktivität:

Human, Maus, Ratte

Zitierte Arten:

Human, Maus, Ratte, Rind

Hinweis-IHC: Antigendemaskierung mit TE-Puffer pH 9,0 empfohlen. (*) Wahlweise kann die Antigendemaskierung auch mit Citratpuffer pH 6,0 erfolgen.

Positivkontrollen:

WB : HeLa-Zellen,

IP : Mausherzgewebe,

IHC : Mausherzgewebe, humanes Herzgewebe

IF : HeLa-Zellen, Mausherzgewebe

Hintergrundinformationen

Connexin-43 (Cx43, also known as gap junction alpha-1), a member of connexin family, plays essential roles in gap junction communication that facilitates direct communication among adjacent cells (PMID: 12270943). Usually, six connexin proteins oligomerize into a hemi-channel or connexon during intercellular channel formation (PMID: 12270943). Mutations of Cx43 may cause a series of diseases such as oculodentodigital dysplasia (ODDD), syndactyly 3 (SDTY3), hypoplastic left heart syndrome 1 (HLHS1) and so on (PMID: 18161618, 1472936, 1147490).

Bemerkenswerte Veröffentlichungen

Verfasser	Pubmed ID	Journal	Anwendung
Xueling He	28969971	Prog Biophys Mol Biol	WB
E O Adegoke	30267989	Ecotoxicol Environ Saf	IF
Hsiang-Chun Lee	28935953	Sci Rep	WB,IP

Lagerung

Lagerungsbedingungen:

Bei -20°C lagern. Nach dem Versand ein Jahr lang stabil

Lagerungspuffer:

PBS mit 0.02% Natriumazid und 50% Glycerin pH 7.3.

Aliquotieren ist nicht notwendig bei -20°C Lagerung

*** 20ul-Größen enthalten 0.1% BSA

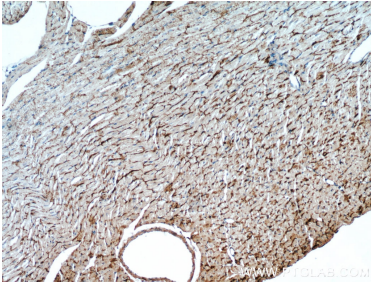
For technical support and original validation data for this product please contact:

T: 1 (888) 4PTGLAB (1-888-478-4522) (toll free in USA), or 1(312) 455-8498 (outside USA)

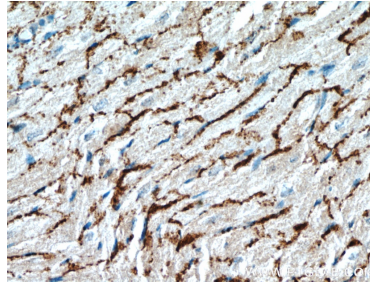
E: proteintech@ptglab.com
W: ptglab.com

This product is exclusively available under Proteintech Group brand and is not available to purchase from any other manufacturer.

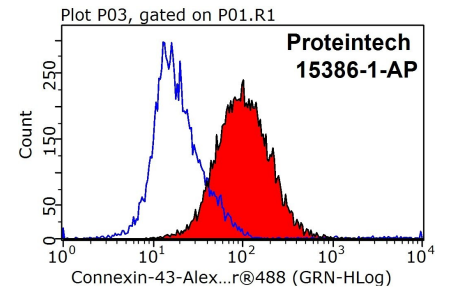
Ausgewählte Validierungsdaten



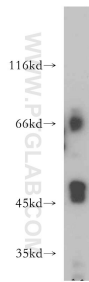
Immunohistochemical analysis of paraffin-embedded mouse heart using 15386-1-AP (GJA1 antibody) at dilution of 1:100 (under 10x lens).



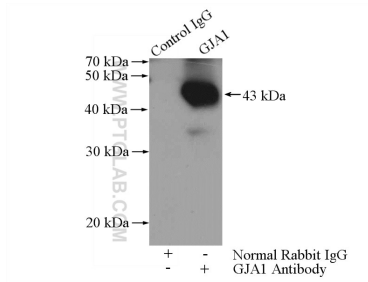
Immunohistochemical analysis of paraffin-embedded mouse heart using 15386-1-AP (GJA1 antibody) at dilution of 1:100 (under 40x lens).



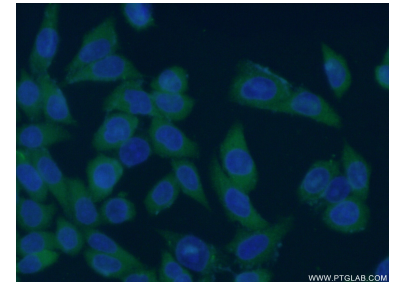
1X10⁶ Jurkat cells were stained with 0.5ug Connexin-43 antibody (15386-1-AP, red) and control antibody (blue). Fixed with 90% MeOH blocked with 3% BSA (30 min). Alexa Fluor 488-conjugated AffiniPure Goat Anti-Rabbit IgG(H+L) with dilution 1:1000.



HeLa cells were subjected to SDS PAGE followed by western blot with 15386-1-AP (GJA1 antibody) at dilution of 1:500 incubated at room temperature for 1.5 hours.



IP Result of anti-Connexin-43 (IP:15386-1-AP, 4ug; Detection:15386-1-AP 1:500) with mouse heart tissue lysate 3200ug.



Immunofluorescent analysis of (-20°C Ethanol) fixed HeLa cells using 15386-1-AP (Connexin-43 antibody) at dilution of 1:50 and Alexa Fluor 488-conjugated AffiniPure Goat Anti-Rabbit IgG(H+L).