

Allgemeine Informationen

Katalog-Nr.:

15417-1-AP

GenBank-Zugangsnummer:

BC005844

Reinigungsmethode:

Antigen-Affinitätsreinigung

Größe:

150ul , Konzentration: 500 µg/ml von Nanodrop;

GeneID (NCBI):

622

Empfohlene Verdünnungen:
WB 1:2000-1:10000
IP 0.5-4.0 ug für IP und 1:400-1:1000 für WB
IHC 1:50-1:500
IF 1:50-1:500
Wirt:

Kaninchen

Vollständiger Name:

3-hydroxybutyrate dehydrogenase, type 1

Isotyp:

IgG

Berechnete Masse:

38 kDa

Immunogen Katalognummer:

AG7705

Beobachtete Masse:

31 kDa

Anwendungen

Geprüfte Anwendungen:

IF, IHC, IP, WB, ELISA

Positivkontrollen:

WB : HepG2-Zellen, COLO 320-Zellen, HT-29-Zellen, humanes Lebergewebe, Mausherzgewebe, Maushirngewebe, Mauslebergewebe, Rattenhirngewebe, Rattenlebergewebe

In Publikationen genannte Anwendungen:

IF, IHC, WB

IP : Mauslebergewebe,

Getestete Reaktivität:

Human, Maus, Ratte

IHC : humanes Leberkarzinomgewebe,

Zitierte Arten:

Human, Maus, Ratte

IF : HepG2-Zellen,

Hinweis-IHC: Antigenmaskierung mit TE-Puffer pH 9,0 empfohlen. (*) Wahlweise kann die Antigenmaskierung auch mit Citratpuffer pH 6,0 erfolgen.

Hintergrundinformationen

BDH1 (3-hydroxybutyrate dehydrogenase, type 1) is a 343 amino acid protein that localizes to the mitochondrial matrix and belongs to the short-chain dehydrogenases/reductases (SDR) family. The deduced 343 amino acid protein contains a 46 residue leader peptide, which is cleaved to produce the mature form. It is a lipid-requiring mitochondrial enzyme with a specific requirement of phosphatidylcholine (PC).

Bemerkenswerte Veröffentlichungen

Verfasser	Pubmed ID	Journal	Anwendung
Nguyen Ngoc Trang	36184012	J Nutr Biochem	WB
De Huang	27644987	Cell Res	WB
Tim Düking	36112685	Sci Adv	WB

Lagerung

Lagerungsbedingungen:

Bei -20°C lagern. Nach dem Versand ein Jahr lang stabil

Lagerungspuffer:

PBS mit 0.02% Natriumazid und 50% Glycerin pH 7.3.

Aliquotieren ist nicht notwendig bei -20°C Lagerung

***** 20ul-Größen enthalten 0.1% BSA**

For technical support and original validation data for this product please contact:

T: 1 (888) 4PTGLAB (1-888-478-4522) (toll free in USA), or 1(312) 455-8498 (outside USA)

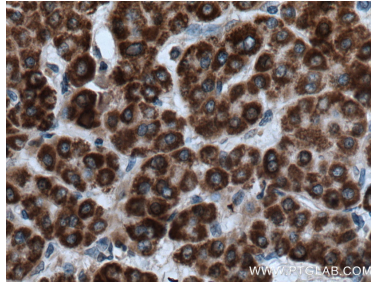
E: proteintech@ptglab.com
W: ptglab.com

This product is exclusively available under Proteintech Group brand and is not available to purchase from any other manufacturer.

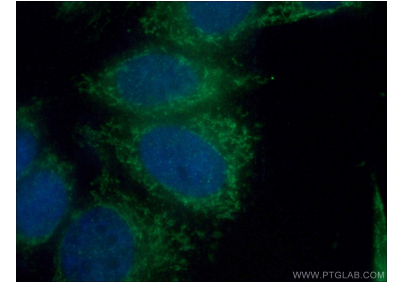
Ausgewählte Validierungsdaten



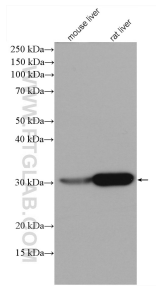
Various lysates were subjected to SDS PAGE followed by western blot with 15417-1-AP (BDH1 antibody) at dilution of 1:5000 incubated at room temperature for 1.5 hours.



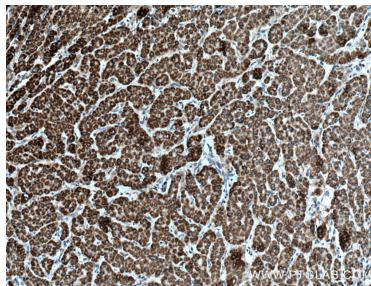
Immunohistochemical analysis of paraffin-embedded human liver cancer tissue slide using 15417-1-AP (BDH1 antibody) at dilution of 1:200 (under 40x lens. Heat mediated antigen retrieval with Tris-EDTA buffer (pH 9.0).



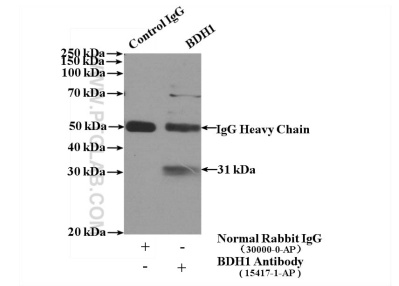
Immunofluorescent analysis of (-20°C Ethanol) fixed HepG2 cells using 15417-1-AP (BDH1 antibody) at dilution of 1:100 and Alexa Fluor 488-Conjugated AffiniPure Goat Anti-Rabbit IgG(H+L).



mouse liver tissue were subjected to SDS PAGE followed by western blot with 15417-1-AP (BDH1 antibody) at dilution of 1:2000 incubated at room temperature for 1.5 hours.



Immunohistochemical analysis of paraffin-embedded human liver cancer tissue slide using 15417-1-AP (BDH1 antibody) at dilution of 1:200 (under 10x lens. Heat mediated antigen retrieval with Tris-EDTA buffer (pH 9.0).



IP Result of anti-BDH1 (IP:15417-1-AP, 4ug; Detection:15417-1-AP 1:300) with mouse liver tissue lysate 4000ug.