

Nur für Forschungszwecke

LONP1 Polyklonaler Antikörper

Katalog-Nr.:15440-1-AP

Vorgestelltes Produkt

68 Publikationen



Allgemeine Informationen

Katalog-Nr.:

15440-1-AP

Größe:

150ul, Konzentration: 500 µg/ml von Nanodrop;

Wirt:

Kaninchen

Isotyp:

IgG

Immunogen Katalognummer:

AG7196

GenBank-Zugangsnummer:

BC000235

GeneID (NCBI):

9361

Vollständiger Name:

lon peptidase 1, mitochondrial

Berechnete Masse:

106 kDa

Beobachtete Masse:

100 kDa

Reinigungsmethode:

Antigen-Affinitätsreinigung

Empfohlene Verdünnungen:

WB 1:1000-1:6000

IP 0.5-4.0 µg für IP und 1:500-1:2000

für WB

IHC 1:50-1:500

IF 1:50-1:500

Anwendungen

Geprüfte Anwendungen:

IF, IHC, IP, WB, ELISA

In Publikationen genannte Anwendungen:

IF, IHC, IP, WB

Getestete Reaktivität:

Human, Maus, Ratte

Zitierte Arten:

Affe, Human, Maus, Ratte

Hinweis-IHC: Antigendemaskierung mit TE-Puffer pH 9,0 empfohlen. (*) Wahlweise kann die Antigendemaskierung auch mit Citratpuffer pH 6,0 erfolgen.

Positivkontrollen:

WB: HeLa-Zellen, humanes Herzgewebe, Jurkat-Zellen, Mausherzgewebe, Maushirngewebe, Rattenherzgewebe, Rattenhirngewebe, Rattenlungengewebe

IP: Mausherzgewebe,

IHC: humanes Lungenkarzinomgewebe,

IF: HepG2-Zellen,

Hintergrundinformationen

LONP1 (Lon protease homolog, mitochondrial) is also named as LONP, LONHS, HLON, LON, PRSS15, PIM1, MGC1498 and belongs to the peptidase S16 family. It seems to play a major role in the elimination of oxidatively modified proteins in the mitochondrial matrix (PMID:18021745). LONP1, also a nuclearly encoded and mitochondrially located stress-responsive protease, is involved in heme-mediated ALAS-1 turnover (PMID:21659532). It recognizes specific surface determinants or folds, initiates proteolysis at solvent-accessible sites, and generates unfolded polypeptides that are then progressively degraded (PMID:15870080). LONP1 has some isoforms with the MW of 106 kDa, 100 kDa and 86 kDa.

Bemerkenswerte Veröffentlichungen

Verfasser	Pubmed ID	Journal	Anwendung
Ruosi Yao	33061303	Drug Des Devel Ther	WB
Ya-Ling Yang	32961796	Int J Mol Sci	WB
Reiko Iida	30310528	Oxid Med Cell Longev	WB

Lagerung

Lagerungsbedingungen:

Bei -20°C lagern. Nach dem Versand ein Jahr lang stabil

Lagerungspuffer:

PBS mit 0.02% Natriumazid und 50% Glycerin pH 7.3.

Aliquotieren ist nicht notwendig bei -20°C Lagerung

*** 20ul-Größen enthalten 0.1% BSA

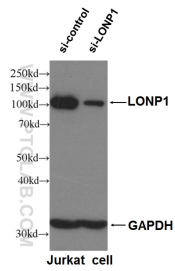
For technical support and original validation data for this product please contact:

T: 1 (888) 4PTGLAB (1-888-478-4522) (toll free in USA), or 1(312) 455-8498 (outside USA)

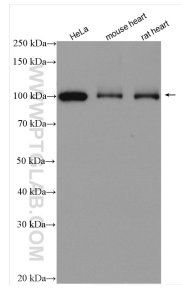
E: proteintech@ptglab.com
W: ptglab.com

This product is exclusively available under Proteintech Group brand and is not available to purchase from any other manufacturer.

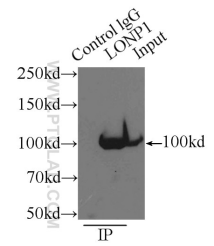
Ausgewählte Validierungsdaten



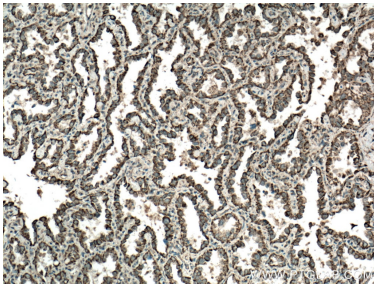
WB result of LONP1 antibody (15440-1-AP, 1:6000) with si-Control and si-LONP1 transfected Jurkat cells.



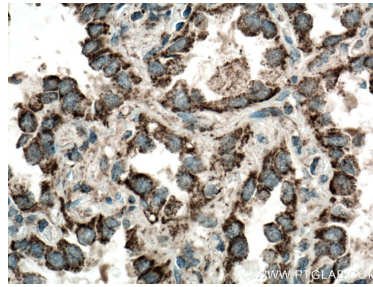
Various lysates were subjected to SDS PAGE followed by western blot with 15440-1-AP (LONP1 antibody) at dilution of 1:3000 incubated at room temperature for 1.5 hours.



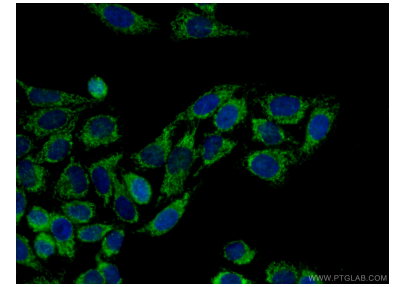
IP Result of anti-LONP1 (IP:15440-1-AP, 3ug; Detection:15440-1-AP 1:1000) with mouse heart tissue lysate 9500ug.



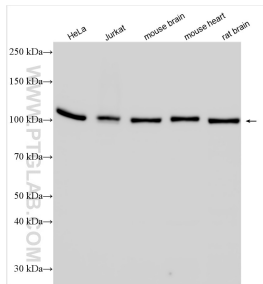
Immunohistochemical analysis of paraffin-embedded human lung cancer tissue slide using 15440-1-AP (LONP1 antibody) at dilution of 1:200 (under 10x lens. Heat mediated antigen retrieval with Tris-EDTA buffer (pH 9.0).



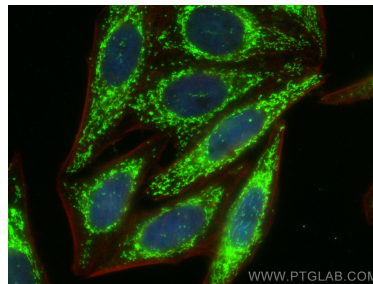
Immunohistochemical analysis of paraffin-embedded human lung cancer tissue slide using 15440-1-AP (LONP1 antibody) at dilution of 1:200 (under 40x lens. Heat mediated antigen retrieval with Tris-EDTA buffer (pH 9.0).



Immunofluorescent analysis of (4% PFA) fixed HepG2 cells using 15440-1-AP (LONP1 antibody) at dilution of 1:50 and Coralite488-Conjugated AffiniPure Goat Anti-Rabbit IgG(H+L).



Various lysates were subjected to SDS PAGE followed by western blot with 15440-1-AP (LONP1 antibody) at dilution of 1:6000 incubated at room temperature for 1.5 hours.



Immunofluorescent analysis of (4% PFA) fixed HepG2 cells using LONP1 antibody (15440-1-AP) at dilution of 1:200 and Coralite@488-Conjugated AffiniPure Goat Anti-Rabbit IgG(H+L), CL594-Phalloidin (red).