

Nur für Forschungszwecke

# DISC1-long-specific Polyklonaler Antikörper



Katalog-Nr.:15500-1-AP

1 Publikationen

## Allgemeine Informationen

Katalog-Nr.:  
15500-1-AP

Größe:  
150ul , Konzentration: 600 µg/ml von  
Nanodrop und 400 µg/ml durch die  
Bradford-Methode mit BSA als  
Standard;

Wirt:  
Kaninchen

Isotyp:  
IgG

GenBank-Zugangsnummer:  
NM\_018662

GeneID (NCBI):  
27185

Vollständiger Name:  
disrupted in schizophrenia 1

Berechnete Masse:  
95 kDa

Beobachtete Masse:  
60 kDa, 62 kDa, 75- 85 kDa

Reinigungsmethode:

Antigen-Affinitätsreinigung

Empfohlene Verdünnungen:

WB 1:200-1:1000  
IP 0.5-4.0 ug für IP und 1:200-1:1000  
für WB  
IHC 1:20-1:200  
IF 1:20-1:200

## Anwendungen

Geprüfte Anwendungen:

IF, IHC, IP, WB, ELISA

In Publikationen genannte Anwendungen:

WB

Getestete Reaktivität:

Human, Maus

Zitierte Arten:

Maus

**Hinweis-IHC: Antigendemaskierung mit TE-Puffer pH 9,0 empfohlen. (\*) Wahlweise kann die Antigendemaskierung auch mit Citratpuffer pH 6,0 erfolgen.**

Positivkontrollen:

WB : SH-SY5Y-Zellen, humanes Nierengewebe, Maushirngewebe, Mausnierengewebe

IP : Maushirngewebe,

IHC : humanes Hirngewebe,

IF : MDCK-Zellen,

## Hintergrundinformationen

DISC1, also named as KIAA0457, is identified as the sole gene whose ORF is truncated and cosegregates with major mental illnesses in a Scottish family. DISC1 may be implicated in psychiatric conditions in other populations than the unique Scottish family. It is involved in the regulation of multiple aspects of embryonic and adult neurogenesis. DISC1 is required for neural progenitor proliferation in the ventricular/subventricular zone during embryonic brain development and in the adult dentate gyrus of the hippocampus. It plays a role, together with PCNT, in the microtubule network formation. In WB, DISC1 has some MW such as 34kd(PMID:18620078 );75-85kd and 95-100kd(PMID:15657124). DISC1 isoforms have distinct developmental patterns of expression. This antibody is against C-terminal of DISC1, binding full length protein specifically.

## Bemerkenswerte Veröffentlichungen

Verfasser	Pubmed ID	Journal	Anwendung
Anna Sancho-Balsells	32477064	Front Cell Neurosci	WB

## Lagerung

Lagerungsbedingungen:

Bei -20°C lagern. Nach dem Versand ein Jahr lang stabil

Lagerungspuffer:

PBS mit 0.02% Natriumazid und 50% Glycerin pH 7.3.

Aliquotieren ist nicht notwendig bei -20°C Lagerung

\*\*\* 20ul-Größen enthalten 0.1% BSA

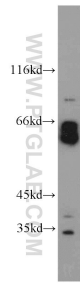
For technical support and original validation data for this product please contact:

T: 1 (888) 4PTGLAB (1-888-478-4522) (toll free in USA), or 1(312) 455-8498 (outside USA)

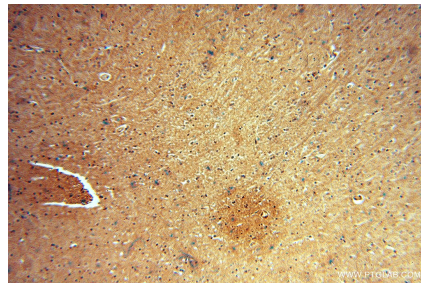
E: proteintech@ptglab.com  
W: ptglab.com

This product is exclusively available under Proteintech Group brand and is not available to purchase from any other manufacturer.

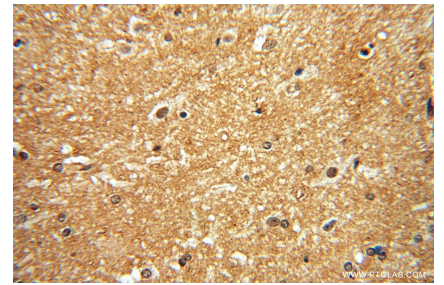
## Ausgewählte Validierungsdaten



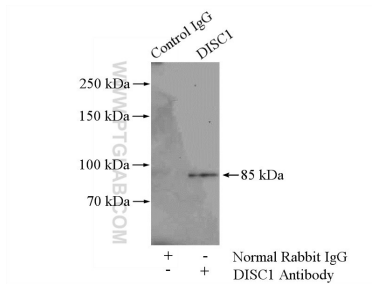
SH-SY5Y cells were subjected to SDS PAGE followed by western blot with 15500-1-AP (DISC1-long-specific antibody) at dilution of 1:200 incubated at room temperature for 1.5 hours.



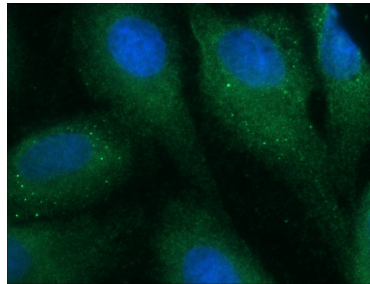
Immunohistochemical analysis of paraffin-embedded human brain using 15500-1-AP (DISC1-long-specific antibody) at dilution of 1:50 (under 10x lens).



Immunohistochemical analysis of paraffin-embedded human brain using 15500-1-AP (DISC1-long-specific antibody) at dilution of 1:50 (under 40x lens).



IP Result of anti-DISC1-long-specific (IP:15500-1-AP, 4ug; Detection:15500-1-AP 1:300) with mouse brain tissue lysate 2560ug.



Immunofluorescent analysis of MDCK cells using 15500-1-AP (DISC1-long-specific antibody) at dilution of 1:50 and Alexa Fluor 488-conjugated AffiniPure Goat Anti-Rabbit IgG(H+L).