

Nur für Forschungszwecke

# transgelin/SM22-specific Polyklonaler Antikörper



Katalog-Nr.:15502-1-AP

3 Publikationen

## Allgemeine Informationen

Katalog-Nr.:

15502-1-AP

Größe:

150ul, Konzentration: 280 µg/ml von Nanodrop und 167 µg/ml durch die Bradford-Methode mit BSA als Standard;

Wirt:

Kaninchen

Isotyp:

IgG

GenBank-Zugangsnummer:

NM\_003186

GeneID (NCBI):

6876

Vollständiger Name:

transgelin

Berechnete Masse:

22 kDa

Beobachtete Masse:

22-25 kDa

Reinigungsmethode:

Antigen-Affinitätsreinigung

Empfohlene Verdünnungen:

WB 1:300-1:600

IHC 1:100-1:4000

## Anwendungen

Geprüfte Anwendungen:

IHC, WB, ELISA

In Publikationen genannte Anwendungen:

WB

Getestete Reaktivität:

Human, Maus, Ratte

Zitierte Arten:

Human, Maus

**Hinweis-IHC: Antigendemaskierung mit TE-Puffer pH 9,0 empfohlen. (\*) Wahlweise kann die Antigendemaskierung auch mit Citratpuffer pH 6,0 erfolgen.**

Positivkontrollen:

WB : Maus-Kolongewebe,

IHC : humanes Herzgewebe, humanes Kolongewebe

## Hintergrundinformationen

The transgelin family is a group of proteins that belong to 22 kDa actin-related corpin superfamily. Of all three isoforms, transgelin 1 is the best characterized. Transgelin 1, also known as SM22alpha, is a specific marker for differentiated smooth muscle cells. Transgelin 2, also known as SM22 beta, is expressed by both smooth muscle and non-smooth muscle cells in a temporally and spatially regulated pattern. Transgelin 3, also known as NP25, is only found in highly differentiated neuronal cells. This antibody is specific to transgelin 1. It does not cross-react with transgelin 2 or 3.

## Bemerkenswerte Veröffentlichungen

Verfasser	Pubmed ID	Journal	Anwendung
Weitie Wang	33510768	Front Genet	WB
Fang He	35178409	Front Med (Lausanne)	WB
B. Paul Herring	28039430	Physiol Genomics	WB

## Lagerung

Lagerungsbedingungen:

Bei -20°C lagern. Nach dem Versand ein Jahr lang stabil

Lagerungspuffer:

PBS mit 0.02% Natriumazid und 50% Glycerin pH 7.3.

Aliquotieren ist nicht notwendig bei -20°C Lagerung

\*\*\* 20ul-Größen enthalten 0.1% BSA

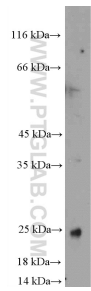
For technical support and original validation data for this product please contact:

T: 1 (888) 4PTGLAB (1-888-478-4522) (toll free in USA), or 1(312) 455-8498 (outside USA)

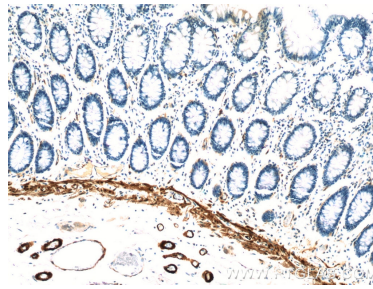
E: proteintech@ptglab.com  
W: ptglab.com

This product is exclusively available under Proteintech Group brand and is not available to purchase from any other manufacturer.

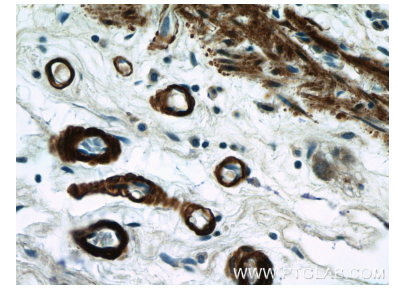
## Ausgewählte Validierungsdaten



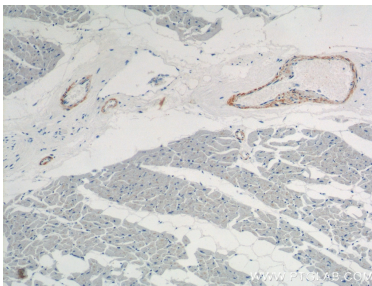
mouse colon tissue were subjected to SDS PAGE followed by western blot with 15502-1-AP (transgelin/SM22-specific antibody at dilution of 1:600 incubated at room temperature for 1.5 hours.



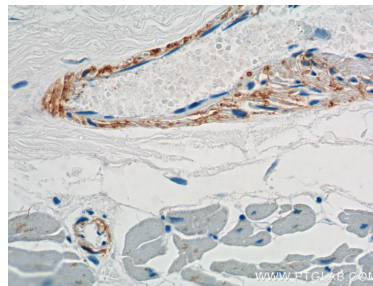
Immunohistochemical analysis of paraffin-embedded human colon tissue slide using 15502-1-AP (transgelin/SM22-specific antibody at dilution of 1:200 (under 10x lens).



Immunohistochemical analysis of paraffin-embedded human colon tissue slide using 15502-1-AP (transgelin/SM22-specific antibody at dilution of 1:200 (under 40x lens).



Immunohistochemical analysis of paraffin-embedded human heart tissue slide using 15502-1-AP (transgelin/SM22-specific antibody at dilution of 1:2000 (under 10x lens).



Immunohistochemical analysis of paraffin-embedded human heart tissue slide using 15502-1-AP (transgelin/SM22-specific antibody at dilution of 1:2000 (under 40x lens).