

Nur für Forschungszwecke

# KISS1R-Specific Polyklonaler Antikörper



Katalog-Nr.: 15505-1-AP

4 Publikationen

## Allgemeine Informationen

<b>Katalog-Nr.:</b> 15505-1-AP	<b>GenBank-Zugangsnummer:</b> NM_032551	<b>Reinigungsmethode:</b> Antigen-Affinitätsreinigung
<b>Größe:</b> 150ul, Konzentration: 500 µg/ml von Nanodrop;	<b>GeneID (NCBI):</b> 84634	<b>Empfohlene Verdünnungen:</b> WB 1:500-1:3000 IHC 1:50-1:500 IF 1:10-1:100
<b>Wirt:</b> Kaninchen	<b>Vollständiger Name:</b> KISS1 receptor	
<b>Isotyp:</b> IgG	<b>Berechnete Masse:</b> 43 kDa <b>Beobachtete Masse:</b> 75 kDa, 43-45 kDa	

## Anwendungen

<b>Geprüfte Anwendungen:</b> FC, IF, IHC, WB, ELISA	<b>Positivkontrollen:</b> WB: Maus-Cerebellum-Gewebe, MCF-7-Zellen, SH-SY5Y-Zellen IHC: Maus-Cerebellum-Gewebe, IF: MCF-7-Zellen, HeLa-Zellen, HepG2-Zellen
<b>In Publikationen genannte Anwendungen:</b> IF, WB	
<b>Getestete Reaktivität:</b> Human, Maus	
<b>Zitierte Arten:</b> Human, Rind	
<b>Hinweis-IHC: Antigenmaskierung mit TE-Puffer pH 9,0 empfohlen. (*) Wahlweise kann die Antigenmaskierung auch mit Citratpuffer pH 6,0 erfolgen.</b>	

## Hintergrundinformationen

KISS1R is the receptor for metastin (kisspeptin-54, 13, 14, 10), C-terminally amidated peptides of KISS-1. KISS-1 is a metastasis suppressor protein that suppresses metastases in malignant melanomas and in some other carcinomas without affecting tumorigenicity. The metastasis suppressor properties may be mediated in part by cell cycle arrest and induction of apoptosis in malignant cells. The receptor is also probably involved in the regulation and fine-tuning of trophoblast invasion generated by the trophoblast itself. Analysis of the transduction pathways activated by the receptor identifies coupling to phospholipase C and intracellular calcium release through pertussis toxin-insensitive G(q) proteins.

## Bemerkenswerte Veröffentlichungen

Verfasser	Pubmed ID	Journal	Anwendung
Yanwei Li	31621904	J Cell Physiol	
Tianwei Chen	36453019	Mol Oncol	WB
Jianhua Sun	29206176	Int J Mol Sci	WB

## Lagerung

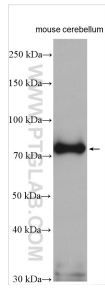
**Lagerungsbedingungen:**  
Bei -20°C lagern. Nach dem Versand ein Jahr lang stabil  
**Lagerungspuffer:**  
PBS mit 0.02% Natriumazid und 50% Glycerin pH 7.3.  
Aliquotieren ist nicht notwendig bei -20°C Lagerung

\*\*\* 20ul-Größen enthalten 0.1% BSA

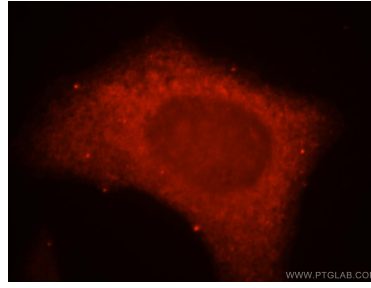
For technical support and original validation data for this product please contact:  
T: 1 (888) 4PTGLAB (1-888-478-4522) (toll free in USA), or 1(312) 455-8498 (outside USA)  
E: proteintech@ptglab.com  
W: ptglab.com

This product is exclusively available under Proteintech Group brand and is not available to purchase from any other manufacturer.

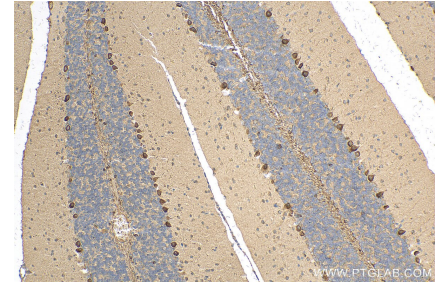
## Ausgewählte Validierungsdaten



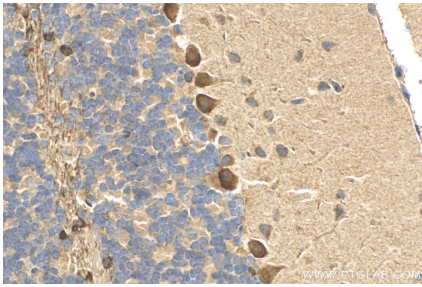
mouse cerebellum tissue were subjected to SDS PAGE followed by western blot with 15505-1-AP (KISS1R-Specific antibody) at dilution of 1:1500 incubated at room temperature for 1.5 hours.



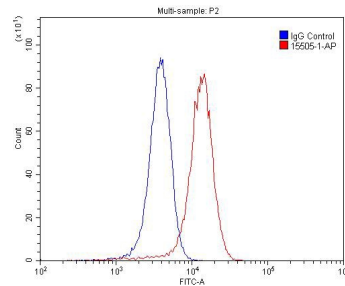
Immunofluorescent analysis of MCF-7 cells, using KISS1R antibody 15505-1-AP at 1:25 dilution and Rhodamine-labeled goat anti-rabbit IgG (red).



Immunohistochemical analysis of paraffin-embedded mouse cerebellum tissue slide using 15505-1-AP (KISS1R-Specific antibody) at dilution of 1:200 (under 10x lens). Heat mediated antigen retrieval with Tris-EDTA buffer (pH 9.0).



Immunohistochemical analysis of paraffin-embedded mouse cerebellum tissue slide using 15505-1-AP (KISS1R-Specific antibody) at dilution of 1:200 (under 40x lens). Heat mediated antigen retrieval with Tris-EDTA buffer (pH 9.0).



1X10<sup>6</sup> SH-SY5Y cells were stained with 0.2ug KISS1R-Specific antibody (15505-1-AP, red) and control antibody (blue). Fixed with 4% PFA blocked with 3% BSA (30 min). Alexa Fluor 488-conjugated AffiniPure Goat Anti-Rabbit IgG(H+L) with dilution 1:1500.