

Nur für Forschungszwecke

# Transgelin-2-specific Polyklonaler Antikörper



Katalog-Nr.:15508-1-AP

Vorgestelltes Produkt

6 Publikationen

## Allgemeine Informationen

Katalog-Nr.:  
15508-1-AP

Größe:  
150ul , Konzentration: 400 µg/ml von  
Nanodrop und 260 µg/ml durch die  
Bradford-Methode mit BSA als  
Standard;

Wirt:  
Kaninchen

Isotyp:  
IgG

GenBank-Zugangsnummer:  
NM\_003564

GeneID (NCBI):  
8407

Vollständiger Name:  
transgelin 2

Berechnete Masse:  
22 kDa

Beobachtete Masse:  
22 kDa

Reinigungsmethode:  
Antigen-Affinitätsreinigung

Empfohlene Verdünnungen:  
WB 1:500-1:1000

IP 0.5-4.0 µg für IP und 1:500-1:1000  
für WB

IHC 1:20-1:200  
IF 1:10-1:100

## Anwendungen

Geprüfte Anwendungen:  
FC, IF, IHC, IP, WB, ELISA

In Publikationen genannte Anwendungen:  
IF, IHC, IP, WB

Getestete Reaktivität:  
Human

Zitierte Arten:  
Human

**Hinweis-IHC: Antigendemaskierung mit TE-Puffer pH 9,0 empfohlen. (\*) Wahlweise kann die Antigendemaskierung auch mit Citratpuffer pH 6,0 erfolgen.**

Positivkontrollen:

WB : HeLa-Zellen, HEK-293-Zellen

IP : L02-Zellen,

IHC : humanes Nierengewebe, humanes Lebergewebe

IF : HepG2-Zellen,

## Hintergrundinformationen

The transgelin family is a group of proteins that belong to 22 kDa actin-related corpnin superfamily. Of all three isoforms, transgelin 1 is the best characterized. Transgelin 1, also known as SM22 alpha, is a specific marker for differentiated smooth muscle cells. Transgelin 2, also known as SM22 beta, is expressed by both smooth muscle and non-smooth muscle cells in a temporally and spatially regulated pattern. Trangenlin 3, also known as NP25, is only found in highly differentiated neuronal cells. This antibody can bind transgelin 2 specifically, but not transgelin 1 or 3.

## Bemerkenswerte Veröffentlichungen

Verfasser	Pubmed ID	Journal	Anwendung
Yan-Yan Du	26414725	J Gastroenterol Hepatol	WB, IHC
Yonglian Huang	34530821	Cancer Cell Int	WB
Xiao Yuan Y	23056327	PLoS One	WB, IF

## Lagerung

Lagerungsbedingungen:

Bei -20°C lagern. Nach dem Versand ein Jahr lang stabil

Lagerungspuffer:

PBS mit 0.02% Natriumazid und 50% Glycerin pH 7.3.

Aliquotieren ist nicht notwendig bei -20°C Lagerung

\*\*\* 20ul-Größen enthalten 0.1% BSA

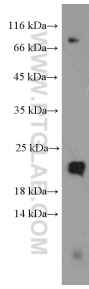
For technical support and original validation data for this product please contact:

T: 1 (888) 4PTGLAB (1-888-478-4522) (toll free  
in USA), or 1(312) 455-8498 (outside USA)

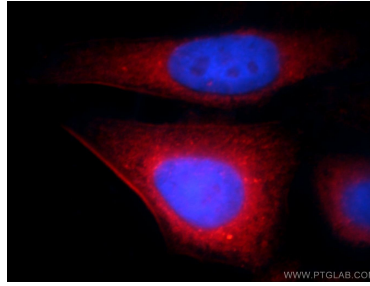
E: proteintech@ptglab.com  
W: ptglab.com

This product is exclusively available under Proteintech Group brand and is not available to purchase from any other manufacturer.

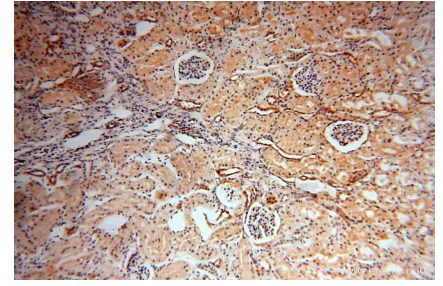
## Ausgewählte Validierungsdaten



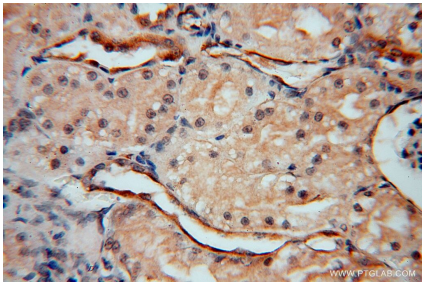
HeLa cells were subjected to SDS PAGE followed by western blot with 15508-1-AP (Transgelin-2-specific antibody) at dilution of 1:600 incubated at room temperature for 1.5 hours.



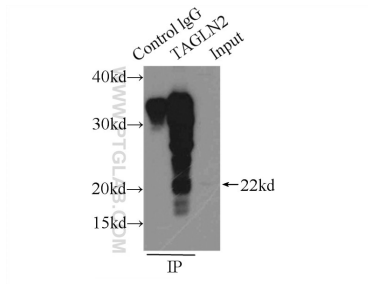
Immunofluorescent analysis of HepG2 cells using 15508-1-AP (Transgelin-2-specific antibody) at dilution of 1:25 and Rhodamine-Goat anti-Rabbit IgG.



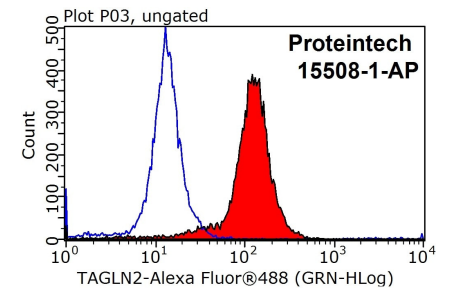
Immunohistochemical analysis of paraffin-embedded human kidney using 15508-1-AP (Transgelin-2-specific antibody) at dilution of 1:50 (under 10x lens).



Immunohistochemical analysis of paraffin-embedded human kidney using 15508-1-AP (Transgelin-2-specific antibody) at dilution of 1:50 (under 40x lens).



IP Result of anti-Transgelin-2-specific (IP:15508-1-AP, 3ug; Detection:15508-1-AP 1:500) with L02 cells lysate 1000ug.



$1 \times 10^6$  HepG2 cells were stained with 0.2ug Transgelin-2-specific antibody (15508-1-AP, red) and control antibody (blue). Fixed with 90% MeOH blocked with 3% BSA (30 min). Alexa Fluor 488-conjugated AffiniPure Goat Anti-Rabbit IgG(H+L) with dilution 1:1000.