

Nur für Forschungszwecke

Cardiac Troponin T Polyklonaler Antikörper



Katalog-Nr.: 15513-1-AP

34 Publikationen

Allgemeine Informationen

Katalog-Nr.: 15513-1-AP	GenBank-Zugangsnummer: BC002653	Reinigungsmethode: Antigen-Affinitätsreinigung
Größe: 150ul, Konzentration: 700 µg/ml von Nanodrop;	GeneID (NCBI): 7139	Empfohlene Verdünnungen: WB 1:500-1:2000 IHC 1:50-1:500 IF 1:50-1:500
Wirt: Kaninchen	Vollständiger Name: troponin T type 2 (cardiac)	
Isotyp: IgG	Berechnete Masse: 36 kDa	
Immunogen Katalognummer: AG7716	Beobachtete Masse: 34-40 kDa	

Anwendungen

Geprüfte Anwendungen:

IF, IHC, WB, ELISA

In Publikationen genannte Anwendungen:

FC, IF, IHC, WB

Getestete Reaktivität:

Human, Maus, Ratte

Zitierte Arten:

Human, Maus, Ratte

Hinweis-IHC: Antigendemaskierung mit TE-Puffer pH 9,0 empfohlen. (*) Wahlweise kann die Antigendemaskierung auch mit Citratpuffer pH 6,0 erfolgen.

Positivkontrollen:

WB: Mausherzgewebe, humanes Herzgewebe, Maus-Skelettmuskelgewebe, Rattenherzgewebe

IHC: Mausherzgewebe, Maus-Skelettmuskelgewebe

IF: Mausherzgewebe,

Hintergrundinformationen

Bemerkenswerte Veröffentlichungen

Verfasser	Pubmed ID	Journal	Anwendung
Jie Shen	36085540	Hum Cell	WB,IF
XiaoLin Sun	32963547	Stem Cells Int	FC,IF
Xueyi Weng	36266658	J Nanobiotechnology	IF

Lagerung

Lagerungsbedingungen:

Bei -20°C lagern. Nach dem Versand ein Jahr lang stabil

Lagerungspuffer:

PBS mit 0.02% Natriumazid und 50% Glycerin pH 7.3.

Aliquotieren ist nicht notwendig bei -20°C Lagerung

*** 20ul-Größen enthalten 0.1% BSA

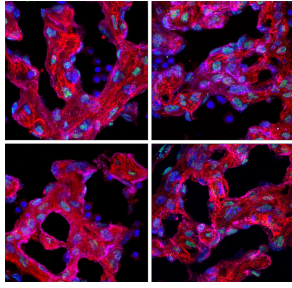
For technical support and original validation data for this product please contact:

T: 1 (888) 4PTGLAB (1-888-478-4522) (toll free in USA), or 1(312) 455-8498 (outside USA)

E: proteintech@ptglab.com
W: ptglab.com

This product is exclusively available under Proteintech Group brand and is not available to purchase from any other manufacturer.

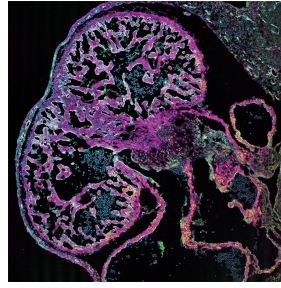
Ausgewählte Validierungsdaten



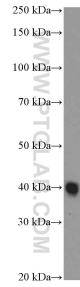
Frozen tissue section of embryonic mouse heart (E12.5) was stained for cardiac troponin-T/cTnT (red, Cat. No 15513-1-AP), CD31/PECAM-1 (magenta), and Arl13B (green, Cat. No 66739-1-Ig) with DAPI as a counterstain for visualizing the nucleus (blue). cTnT stains cardiomyocytes and was visualized with an Alexa Fluor 555 secondary antibody. CD31 stains endocardial/endothelial cells and was visualized with an Alexa Fluor 647 secondary



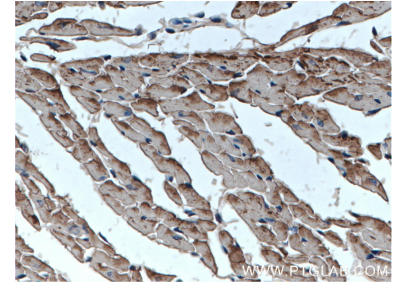
Immunohistochemical analysis of paraffin-embedded mouse heart tissue slide using 15513-1-AP (Cardiac Troponin T antibody) at dilution of 1:200 (under 10x lens. Heat mediated antigen retrieval with Tris-EDTA buffer (pH 9.0).



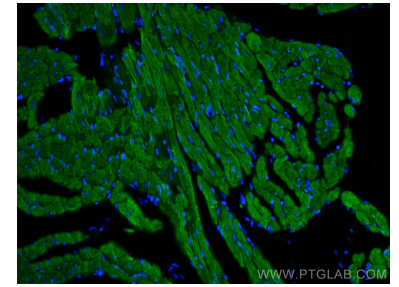
Frozen tissue section of embryonic mouse heart (E12.5) was stained for cardiac troponin-T/cTnT (magenta, Cat. No 15513-1-AP), CD31/PECAM-1 (white), and Arl13B (yellow, Cat. No 66739-1-Ig) with DAPI as a counterstain for visualizing the nucleus (cyan). cTnT stains cardiomyocytes and was visualized with an Alexa Fluor 555 secondary antibody and pseudocolored to magenta. CD31 stains endocardial/endothelial cells and was visualized with an Alexa Fluor 647 secondary



mouse heart tissue were subjected to SDS PAGE followed by western blot with 15513-1-AP (Cardiac Troponin T antibody at dilution of 1:1000 incubated at room temperature for 1.5 hours.



Immunohistochemical analysis of paraffin-embedded mouse heart tissue slide using 15513-1-AP (Cardiac Troponin T antibody) at dilution of 1:200 (under 40x lens. Heat mediated antigen retrieval with Tris-EDTA buffer (pH 9.0).



Immunofluorescent analysis of (4% PFA) fixed mouse heart tissue using Cardiac Troponin T antibody (15513-1-AP) at dilution of 1:200 and CoraLite@488-Conjugated AffiniPure Goat Anti-Rabbit IgG(H+L).