

## Allgemeine Informationen

<b>Katalog-Nr.:</b> 15538-1-AP	<b>GenBank-Zugangsnummer:</b> BC002348	<b>Reinigungsmethode:</b> Antigen-Affinitätsreinigung
<b>Größe:</b> 150ul , Konzentration: 350 µg/ml von Nanodrop und 240 µg/ml durch die Bradford-Methode mit BSA als Standard;	<b>GeneID (NCBI):</b> 10204	<b>Empfohlene Verdünnungen:</b> WB 1:500-1:3000 IHC 1:50-1:500 IF 1:10-1:100
<b>Wirt:</b> Kaninchen	<b>Vollständiger Name:</b> nuclear transport factor 2	
<b>Isotyp:</b> IgG	<b>Berechnete Masse:</b> 14 kDa	
<b>Immunogen Katalognummer:</b> AG7879	<b>Beobachtete Masse:</b> 14 kDa	

## Anwendungen

<b>Geprüfte Anwendungen:</b> IF, IHC, WB, ELISA	<b>Positivkontrollen:</b> WB : K-562-Zellen, IHC : humanes Ovarialkarzinomgewebe, IF : MCF-7-Zellen,
<b>Getestete Reaktivität:</b> Human, Maus, Ratte	
<b>Hinweis-IHC: Antigenmaskierung mit TE-Puffer pH 9,0 empfohlen. (*) Wahlweise kann die Antigenmaskierung auch mit Citratpuffer pH 6,0 erfolgen.</b>	

## Hintergrundinformationen

NTF2 (nuclear transport factor 2), also named as NTF2, is a cytosolic protein responsible for nuclear import of Ran, a small Ras-like GTPase involved in a number of critical cellular processes, including cell cycle regulation, chromatin organization during mitosis, reformation of the nuclear envelope following mitosis, and controlling the directionality of nucleocytoplasmic transport. Nucleocytoplasmic translocation of NTF2 is regulated in mammalian cells, and may involve a tyrosine and/or threonine kinase-dependent signal transduction mechanism(s) (PMID: 22880006). The MW of this protein is 14 kDa, and this antibody specially recognises the 14 kDa protein.

## Lagerung

**Lagerungsbedingungen:**  
Bei -20°C lagern. Nach dem Versand ein Jahr lang stabil  
**Lagerungspuffer:**  
PBS mit 0.02% Natriumazid und 50% Glycerin pH 7.3.  
Aliquotieren ist nicht notwendig bei -20°C Lagerung

\*\*\* 20ul-Größen enthalten 0.1% BSA

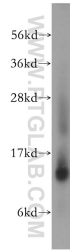
For technical support and original validation data for this product please contact:

T: 1 (888) 4PTGLAB (1-888-478-4522) (toll free in USA), or 1(312) 455-8498 (outside USA)

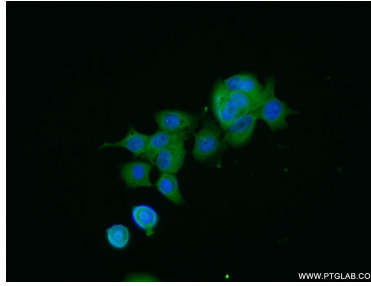
E: proteintech@ptglab.com  
W: ptglab.com

This product is exclusively available under Proteintech Group brand and is not available to purchase from any other manufacturer.

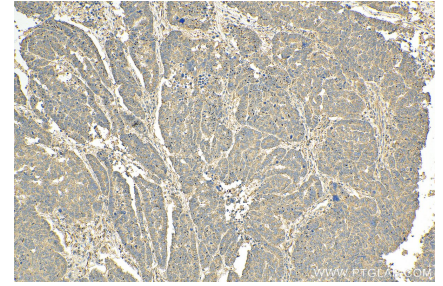
## Ausgewählte Validierungsdaten



K-562 cells were subjected to SDS PAGE followed by western blot with 15538-1-AP (NTF2 antibody) at dilution of 1:500 incubated at room temperature for 1.5 hours.



Immunofluorescent analysis of MCF-7 cells using 15538-1-AP (NTF2 antibody) at dilution of 1:25 and Alexa Fluor 488-conjugated AffiniPure Goat Anti-Rabbit IgG(H+L).



Immunohistochemical analysis of paraffin-embedded human ovary tumor tissue slide using 15538-1-AP (NTF2 antibody) at dilution of 1:200 (under 10x lens). Heat mediated antigen retrieval with Tris-EDTA buffer (pH 9.0).