

Allgemeine Informationen

Katalog-Nr.: 15539-1-AP	GenBank-Zugangsnummer: BC002700	Reinigungsmethode: Antigen-Affinitätsreinigung
Größe: 150ul , Konzentration: 450 µg/ml von Nanodrop;	GeneID (NCBI): 3855	Empfohlene Verdünnungen: WB 1:5000-1:50000 IHC 1:1000-1:30000 IF 1:50-1:500
Wirt: Kaninchen	Vollständiger Name: keratin 7	
Isotyp: IgG	Berechnete Masse: 469 aa, 51 kDa	
Immunogen Katalognummer: AG7895	Beobachtete Masse: 51 kDa	

Anwendungen

Geprüfte Anwendungen:

FC, IF, IHC, WB, ELISA

In Publikationen genannte Anwendungen:

IF, IHC, WB

Getestete Reaktivität:

Human, Maus, Ratte

Zitierte Arten:

Human, Maus, Ratte

Hinweis-IHC: Antigendemaskierung mit TE-Puffer pH 9,0 empfohlen. (*) Wahlweise kann die Antigendemaskierung auch mit Citratpuffer pH 6,0 erfolgen.

Positivkontrollen:

WB: HeLa-Zellen, A431-Zellen, HepG2-Zellen, Mauslebergewebe, MCF-7-Zellen, Rattenlebergewebe

IHC: humanes Pankreasgewebe, humanes Leberkarzinomgewebe, humanes Lungengewebe, humanes Lungenkarzinomgewebe, humanes Magenkrebsgewebe, humanes Mammakarzinomgewebe, humanes Nierengewebe, humanes Ovarialkarzinomgewebe, Mausnierengewebe, Rattennierengewebe

IF: HeLa-Zellen,

Hintergrundinformationen

Keratins are a large family of proteins that form the intermediate filament cytoskeleton of epithelial cells, which are classified into two major sequence types. Type I keratins are a group of acidic intermediate filament proteins, including K9-K23, and the hair keratins Ha1-Ha8. Type II keratins are the basic or neutral counterparts to the acidic type I keratins, including K1-K8, and the hair keratins, Hb1-Hb6. KRT7 is a type II keratin. It is specifically expressed in the simple epithelia lining the cavities of the internal organs and in the gland ducts and blood vessels.

Bemerkenswerte Veröffentlichungen

Verfasser	Pubmed ID	Journal	Anwendung
Sainan Zhang	34603292	Front Immunol	IF
Ziyi Wang	36387215	Front Oncol	WB
Jiayi Zheng	29499763	Reprod Biol Endocrinol	IHC

Lagerung

Lagerungsbedingungen:

Bei -20°C lagern. Nach dem Versand ein Jahr lang stabil

Lagerungspuffer:

PBS mit 0.02% Natriumazid und 50% Glycerin pH 7.3.

Aliquotieren ist nicht notwendig bei -20°C Lagerung

*** 20ul-Größen enthalten 0.1% BSA

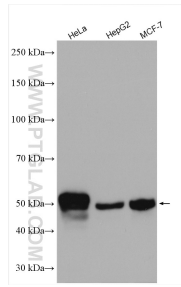
For technical support and original validation data for this product please contact:

T: 1 (888) 4PTGLAB (1-888-478-4522) (toll free in USA), or 1(312) 455-8498 (outside USA)

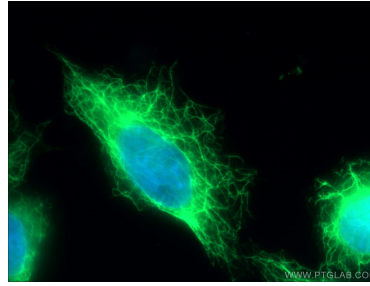
E: proteintech@ptglab.com
W: ptglab.com

This product is exclusively available under Proteintech Group brand and is not available to purchase from any other manufacturer.

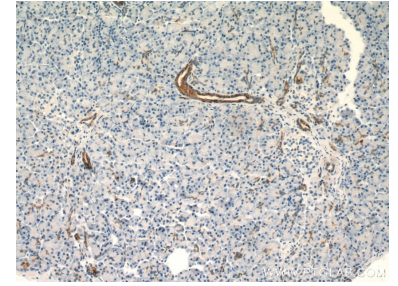
Ausgewählte Validierungsdaten



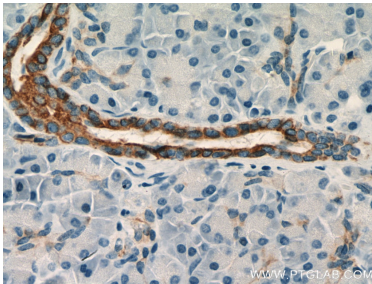
Various lysates were subjected to SDS PAGE followed by western blot with 15539-1-AP (Cytokeratin 7 antibody) at dilution of 1:10000 incubated at room temperature for 1.5 hours.



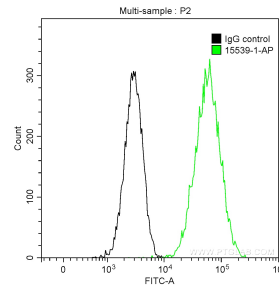
Immunofluorescent analysis of (-20°C Ethanol) fixed HeLa cells using 15539-1-AP (Cytokeratin 7 antibody) at dilution of 1:50 and Alexa Fluor 488-conjugated AffiniPure Goat Anti-Rabbit IgG(H+L).



Immunohistochemical analysis of paraffin-embedded human pancreas tissue slide using 15539-1-AP (Cytokeratin 7 antibody) at dilution of 1:25600 (under 10x lens. Heat mediated antigen retrieval with Tris-EDTA buffer (pH 9.0).



Immunohistochemical analysis of paraffin-embedded human pancreas tissue slide using 15539-1-AP (Cytokeratin 7 antibody) at dilution of 1:25600 (under 40x lens. Heat mediated antigen retrieval with Tris-EDTA buffer (pH 9.0).



1X10⁶ HeLa cells were stained with 0.2 ug Anti-Human Cytokeratin 7 (15539-1-AP) and CoraLite®488-Conjugated AffiniPure Goat Anti-Rabbit IgG(H+L) at dilution 1:1000 (green), and 0.2 ug Control Antibody. Cells were fixed with 90% MeOH.