

Nur für Forschungszwecke

# VAMP8 Polyklonaler Antikörper

Katalog-Nr.:15546-1-AP

9 Publikationen



## Allgemeine Informationen

<b>Katalog-Nr.:</b> 15546-1-AP	<b>GenBank-Zugangsnummer:</b> BC001634	<b>Reinigungsmethode:</b> Antigen-Affinitätsreinigung
<b>Größe:</b> 150ul , Konzentration: 400 µg/ml von Nanodrop und 253 µg/ml durch die Bradford-Methode mit BSA als Standard;	<b>GeneID (NCBI):</b> 8673	<b>Empfohlene Verdünnungen:</b> WB 1:500-1:2000 IHC 1:200-1:800
<b>Wirt:</b> Kaninchen	<b>Vollständiger Name:</b> vesicle-associated membrane protein 8 (endobrevin)	
<b>Isotyp:</b> IgG	<b>Berechnete Masse:</b> 11 kDa	
<b>Immunogen Katalognummer:</b> AG7903	<b>Beobachtete Masse:</b> 15 kDa	

## Anwendungen

<b>Geprüfte Anwendungen:</b> IHC, WB, ELISA	<b>Positivkontrollen:</b> WB : HL-60-Zellen, PC-12-Zellen IHC : humanes Plazenta-Gewebe,
<b>In Publikationen genannte Anwendungen:</b> ColP, WB	
<b>Getestete Reaktivität:</b> Human, Maus, Ratte	
<b>Zitierte Arten:</b> Human, Maus, Ratte	
<b>Hinweis-IHC: Antigendemaskierung mit TE-Puffer pH 9,0 empfohlen. (*) Wahlweise kann die Antigendemaskierung auch mit Citratpuffer pH 6,0 erfolgen.</b>	

## Hintergrundinformationen

VAMP8, also named as endobrevin, is a member of the vesicle-associated membrane protein (VAMP)/synaptobrevin family and the SNARE (soluble NSF-attachment protein receptor) superfamily. Characterized by a common sequence called the SNARE motif, SNARE proteins are involved in membrane fusion and vesicular transport (PMID: 11252968). VAMP8 is involved in autophagy through the direct control of autophagosome membrane fusion with the lysosome membrane. It is required for dense-granule secretion in platelets and plays a role in regulated enzyme secretion in pancreatic acinar cells. VAMP8 is also involved in the abscission of the midbody during cell division, which leads to completely separate daughter cells.

## Bemerkenswerte Veröffentlichungen

Verfasser	Pubmed ID	Journal	Anwendung
Zheng Li	31775910	Stem Cell Res Ther	WB
Taotao Zhang	36346119	J Periodontal Res	WB
Anxiong Liu	33677131	Biochem Biophys Res Commun	WB, ColP

## Lagerung

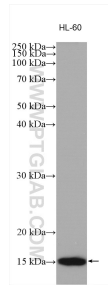
**Lagerungsbedingungen:**  
Bei -20°C lagern. Nach dem Versand ein Jahr lang stabil  
**Lagerungspuffer:**  
PBS mit 0.02% Natriumazid und 50% Glycerin pH 7.3.  
Aliquotieren ist nicht notwendig bei -20°C Lagerung

\*\*\* 20ul-Größen enthalten 0.1% BSA

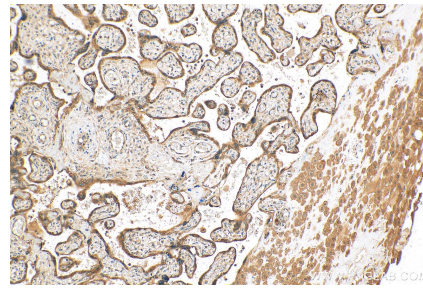
For technical support and original validation data for this product please contact:  
T: 1 (888) 4PTGLAB (1-888-478-4522) (toll free in USA), or 1(312) 455-8498 (outside USA)  
E: proteintech@ptglab.com  
W: ptglab.com

This product is exclusively available under Proteintech Group brand and is not available to purchase from any other manufacturer.

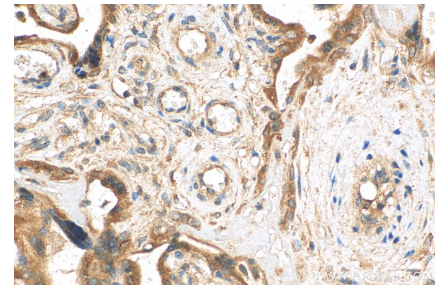
## Ausgewählte Validierungsdaten



HL-60 cells were subjected to SDS PAGE followed by western blot with 15546-1-AP (VAMP8 antibody) at dilution of 1:1000 incubated at room temperature for 1.5 hours.



Immunohistochemical analysis of paraffin-embedded human placenta tissue slide using 15546-1-AP (VAMP8 antibody) at dilution of 1:400 (under 10x lens). Heat mediated antigen retrieval with Tris-EDTA buffer (pH 9.0).



Immunohistochemical analysis of paraffin-embedded human placenta tissue slide using 15546-1-AP (VAMP8 antibody) at dilution of 1:400 (under 40x lens). Heat mediated antigen retrieval with Tris-EDTA buffer (pH 9.0).