

Nur für Forschungszwecke

RNASEH1 Polyklonaler Antikörper

Katalog-Nr.:15606-1-AP

Vorgestelltes Produkt

35 Publikationen



Allgemeine Informationen

Katalog-Nr.:

15606-1-AP

Größe:

150ul, Konzentration: 500 µg/ml von Nanodrop;

Wirt:

Kaninchen

Isotyp:

IgG

Immunogen Katalognummer:

AG7990

GenBank-Zugangsnummer:

BC002973

GeneID (NCBI):

246243

Vollständiger Name:

ribonuclease H1

Berechnete Masse:

32 kDa

Beobachtete Masse:

32 kDa

Reinigungsmethode:

Antigen-Affinitätsreinigung

Empfohlene Verdünnungen:

WB 1:1000-1:5000

IP 0.5-4.0 µg für IP und 1:500-1:1000 für WB

IF 1:50-1:500

Anwendungen

Geprüfte Anwendungen:

IF, IP, WB, ELISA

In Publikationen genannte Anwendungen:

IF, WB

Getestete Reaktivität:

Human, Maus, Ratte

Zitierte Arten:

Human, Maus

Positivkontrollen:

WB : HeLa-Zellen, U2OS-Zellen

IP : HeLa-Zellen,

IF : HeLa-Zellen,

Hintergrundinformationen

Ribonucleases H are enzymes that cleave the RNA of RNA/DNA hybrids that form during replication and repair and which could lead to DNA instability if they were not processed. Eukaryotic RNases H are larger and more complex than their prokaryotic counterparts [PMID:12667461]. Eukaryotic RNase H1 has acquired a Hybrid Binding Domain that confers processivity and affinity for the substrate. Because of its essential role and its similarities in structure and enzymatic mechanism to the RNase H of HIV reverse transcriptase, RNASEH1 has been implicated in mitochondrial DNA replication during mouse development [PMID:19228196].

Bemerkenswerte Veröffentlichungen

Verfasser	Pubmed ID	Journal	Anwendung
Negin Khosraviani	36178790	STAR Protoc	WB
Sonia Jimeno	34535666	Nat Commun	IF
Yanli Liu	36114190	Nat Commun	IF

Lagerung

Lagerungsbedingungen:

Bei -20°C lagern. Nach dem Versand ein Jahr lang stabil

Lagerungspuffer:

PBS mit 0.02% Natriumazid und 50% Glycerin pH 7.3.

Aliquotieren ist nicht notwendig bei -20°C Lagerung

*** 20ul-Größen enthalten 0.1% BSA

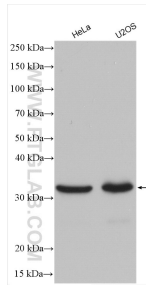
For technical support and original validation data for this product please contact:

T: 1 (888) 4PTGLAB (1-888-478-4522) (toll free in USA), or 1(312) 455-8498 (outside USA)

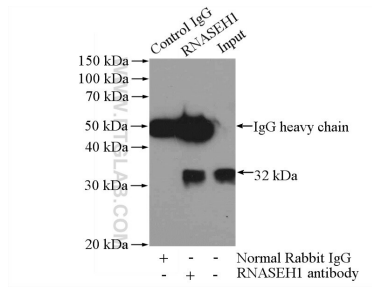
E: proteintech@ptglab.com
W: ptglab.com

This product is exclusively available under Proteintech Group brand and is not available to purchase from any other manufacturer.

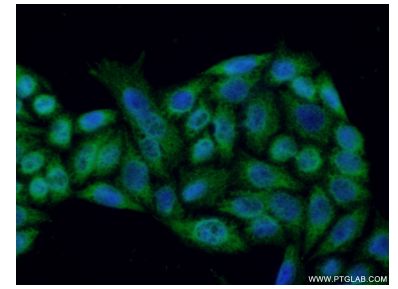
Ausgewählte Validierungsdaten



Various lysates were subjected to SDS PAGE followed by western blot with 15606-1-AP (RNASEH1 antibody) at dilution of 1:2500 incubated at room temperature for 1.5 hours.



IP Result of anti-RNASEH1 (IP:15606-1-AP, 3 μ g; Detection:15606-1-AP 1:500) with HeLa cells lysate 1200 μ g.



Immunofluorescent analysis of (-20°C Ethanol) fixed HeLa cells using 15606-1-AP (RNASEH1 antibody) at dilution of 1:50 and Alexa Fluor 488-conjugated AffiniPure Goat Anti-Rabbit IgG(H+L).