

Allgemeine Informationen

Katalog-Nr.:
15617-1-AP

Größe:
150ul, Konzentration: 450 µg/ml von
Nanodrop und 320 µg/ml durch die
Bradford-Methode mit BSA als
Standard;

Wirt:
Kaninchen

Isotyp:
IgG

Immunogen Katalognummer:
AG8028

GenBank-Zugangsnummer:
BC003138

GeneID (NCBI):
9055

Vollständiger Name:
protein regulator of cytokinesis 1

Berechnete Masse:
72 kDa

Beobachtete Masse:
66 kDa

Reinigungsmethode:

Antigen-Affinitätsreinigung

Empfohlene Verdünnungen:

WB 1:1000-1:8000

IP 0.5-4.0 µg für IP und 1:200-1:1000

für WB

IHC 1:50-1:500

IF 1:20-1:200

Anwendungen

Geprüfte Anwendungen:

IF, IHC, IP, WB, ELISA

In Publikationen genannte Anwendungen:

IF, IHC, WB

Getestete Reaktivität:

Human

Zitierte Arten:

Human, Maus

Hinweis-IHC: Antigendemaskierung mit TE-Puffer pH 9,0 empfohlen. (*) Wahlweise kann die Antigendemaskierung auch mit Citratpuffer pH 6,0 erfolgen.

Positivkontrollen:

WB : MCF-7-Zellen, C6-Zellen, HEK-293-Zellen, HeLa-Zellen, K-562-Zellen, Raji-Zellen, SH-SY5Y-Zellen

IP : HEK-293-Zellen,

IHC : humanes Mammakarzinomgewebe,

IF : HepG2-Zellen,

Hintergrundinformationen

PRC1 (protein regulator of cytokinesis 1) is a microtubule-bundling protein that is involved in cytokinesis. Depletion of PRC1 leads to failed cytokinesis. PRC1 is located in the nucleus during interphase, and becomes associated with mitotic spindles in a highly dynamic manner during mitosis, and localizes to the cell mid-body during cytokinesis. PRC1 is a substrate of CDK1 and it was assumed that CDK1 phosphorylation blocks its activity during metaphase. Three isoforms of PRC1 exist due to the alternative splicing, with predictive molecular weight of 71.6 kDa, 70.2 kDa and 66.2 kDa, respectively. The dual bands between 66-72 kDa detected by this antibody may represent different forms of PRC1.

Bemerkenswerte Veröffentlichungen

Verfasser	Pubmed ID	Journal	Anwendung
Jing Li	34531368	Nat Commun	WB,IHC
Mansour Aboelenain	34636397	Development	WB
Tianyu Wu	36395215	Science	IF

Lagerung

Lagerungsbedingungen:

Bei -20°C lagern. Nach dem Versand ein Jahr lang stabil

Lagerungspuffer:

PBS mit 0.02% Natriumazid und 50% Glycerin pH 7.3.

Aliquotieren ist nicht notwendig bei -20°C Lagerung

*** 20ul-Größen enthalten 0.1% BSA

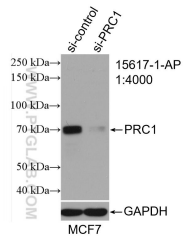
For technical support and original validation data for this product please contact:

T: 1 (888) 4PTGLAB (1-888-478-4522) (toll free in USA), or 1(312) 455-8498 (outside USA)

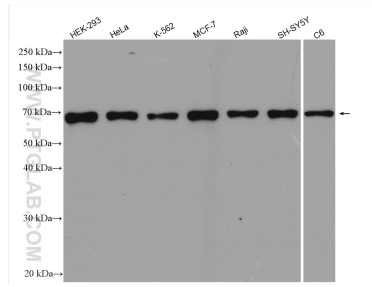
E: proteintech@ptglab.com
W: ptglab.com

This product is exclusively available under Proteintech Group brand and is not available to purchase from any other manufacturer.

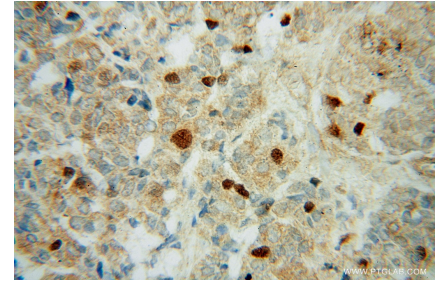
Ausgewählte Validierungsdaten



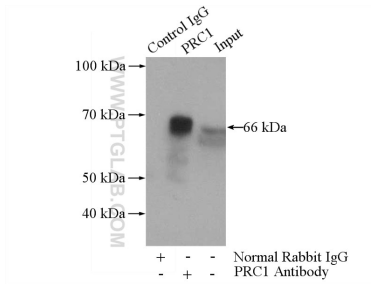
WB result of PRC1 antibody (15617-1-AP; 1:4000; incubated at room temperature for 1.5 hours) with sh-Control and sh-PRC1 transfected MCF-7 cells.



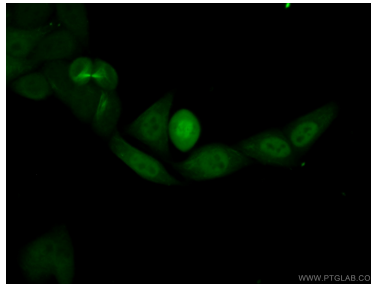
Various lysates were subjected to SDS PAGE followed by western blot with 15617-1-AP (PRC1 antibody) at dilution of 1:20000 incubated at room temperature for 1.5 hours.



Immunohistochemical analysis of paraffin-embedded human breast cancer using 15617-1-AP (PRC1 antibody) at dilution of 1:50 (under 40x lens).



IP Result of anti-PRC1 (IP:15617-1-AP, 4µg; Detection:15617-1-AP 1:300) with HEK-293 cells lysate 1480µg.



Immunofluorescent analysis of (10% Formaldehyde) fixed HepG2 cells using 15617-1-AP (PRC1 antibody) at dilution of 1:50 and Alexa Fluor 488-conjugated AffiniPure Goat Anti-Rabbit IgG(H+L).