

Allgemeine Informationen

Katalog-Nr.: 15618-1-AP	GenBank-Zugangsnummer: BC000729	Reinigungsmethode: Antigen-Affinitätsreinigung
Größe: 150ul, Konzentration: 450 µg/ml von Nanodrop und 240 µg/ml durch die Bradford-Methode mit BSA als Standard;	GeneID (NCBI): 8165	Empfohlene Verdünnungen: WB 1:500-1:2000 IP 0.5-4.0 µg für IP und 1:1000-1:4000 für WB
Wirt: Kaninchen	Vollständiger Name: A kinase (PRKA) anchor protein 1	IHC 1:50-1:500 IF 1:10-1:100
Isotyp: IgG	Berechnete Masse: 97 kDa	
Immunogen Katalognummer: AG8037	Beobachtete Masse: 149 kDa	

Anwendungen

Geprüfte Anwendungen: FC, IF, IHC, IP, WB, ELISA	Positivkontrollen:
In Publikationen genannte Anwendungen: IF, IP, WB	WB: HeLa-Zellen, humanes Lebergewebe, MCF-7-Zellen, PC-3-Zellen
Getestete Reaktivität: Human	IP: PC-3-Zellen,
Zitierte Arten: Human	IHC: humanes Lungenkarzinomgewebe, humanes Dünndarmgewebe, humanes Kolonkarzinomgewebe, humanes Prostatakarzinomgewebe
Hinweis-IHC: Antigenmaskierung mit TE-Puffer pH 9,0 empfohlen. (*) Wahlweise kann die Antigenmaskierung auch mit Citratpuffer pH 6,0 erfolgen.	IF: MCF-7-Zellen,

Hintergrundinformationen

AKAP1 (also termed AKAP149) is a human 149 kDa anchoring protein localized in mitochondria and the endoplasmic reticulum/nuclear envelope (ER-NE) network. It binds to type I and II regulatory subunits of protein kinase A and anchors them to the cytoplasmic face of the mitochondrial outer membrane. This protein is speculated to be involved in the cAMP-dependent signal transduction pathway and in directing RNA to a specific cellular compartment.

Bemerkenswerte Veröffentlichungen

Verfasser	Pubmed ID	Journal	Anwendung
Wenxian Wu	27145933	EMBO J	WB
Grozdanov Petar N PN	23077346	Mol Endocrinol	WB, IP, IF

Lagerung

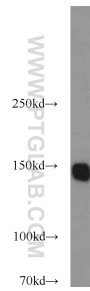
Lagerungsbedingungen:
Bei -20°C lagern. Nach dem Versand ein Jahr lang stabil
Lagerungspuffer:
PBS mit 0.02% Natriumazid und 50% Glycerin pH 7.3.
Aliquotieren ist nicht notwendig bei -20°C Lagerung

*** 20ul-Größen enthalten 0.1% BSA

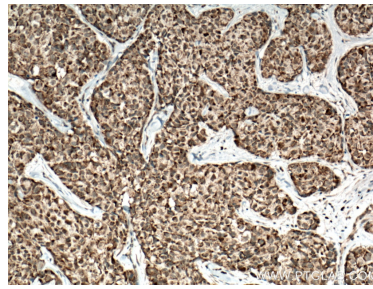
For technical support and original validation data for this product please contact:
T: 1 (888) 4PTGLAB (1-888-478-4522) (toll free in USA), or 1(312) 455-8498 (outside USA)
E: proteintech@ptglab.com
W: ptglab.com

This product is exclusively available under Proteintech Group brand and is not available to purchase from any other manufacturer.

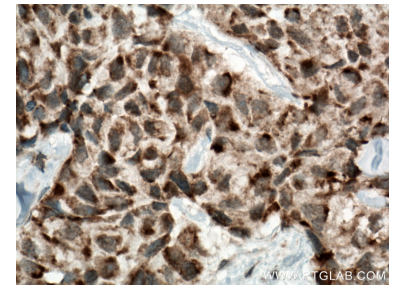
Ausgewählte Validierungsdaten



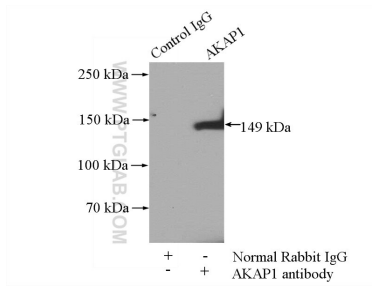
HeLa cells were subjected to SDS PAGE followed by western blot with 15618-1-AP (AKAP1 antibody) at dilution of 1:1000 incubated at room temperature for 1.5 hours.



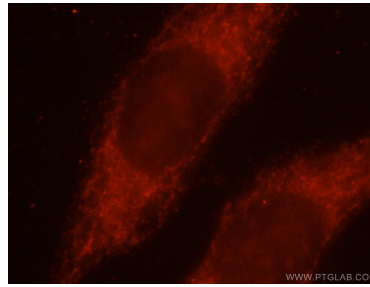
Immunohistochemical analysis of paraffin-embedded human lung cancer tissue slide using 15618-1-AP (AKAP1 antibody) at dilution of 1:200 (under 10x lens. Heat mediated antigen retrieval with Tris-EDTA buffer (pH 9.0).



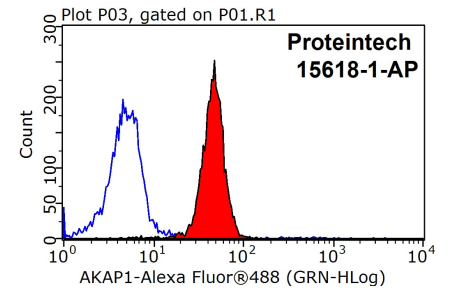
Immunohistochemical analysis of paraffin-embedded human lung cancer tissue slide using 15618-1-AP (AKAP1 antibody) at dilution of 1:200 (under 40x lens. Heat mediated antigen retrieval with Tris-EDTA buffer (pH 9.0).



IP Result of anti-AKAP1 (IP:15618-1-AP, 4ug; Detection:15618-1-AP 1:2000) with PC-3 cells lysate 1800ug.



Immunofluorescent analysis of MCF-7 cells, using AKAP1 antibody 15618-1-AP at 1:25 dilution and Rhodamine-labeled goat anti-rabbit IgG (red).



1X10⁶ MCF-7 cells were stained with 0.2ug AKAP1 antibody (15618-1-AP, red) and control antibody (blue). Fixed with 90% MeOH blocked with 3% BSA (30 min). Alexa Fluor 488-conjugated AffiniPure Goat Anti-Rabbit IgG(H+L) with dilution 1:1500.