

Nur für Forschungszwecke

IGFBP2 Polyklonaler Antikörper

Katalog-Nr.:15699-1-AP



Allgemeine Informationen

Katalog-Nr.: 15699-1-AP	GenBank-Zugangsnummer: BC004312	Reinigungsmethode: Antigen-Affinitätsreinigung
Größe: 150ul , Konzentration: 240 µg/ml von Nanodrop und 153 µg/ml durch die Bradford-Methode mit BSA als Standard;	GeneID (NCBI): 3485	Empfohlene Verdünnungen: WB 1:500-1:1000 IHC 1:50-1:500 IF 1:10-1:100
Wirt: Kaninchen	Vollständiger Name: IGF binding protein 2	
Isotyp: IgG	Berechnete Masse: 36 kDa	
Immunogen Katalognummer: AG8327	Beobachtete Masse: 32 kDa	

Anwendungen

Geprüfte Anwendungen:

IF, IHC, WB, ELISA

Getestete Reaktivität:

Human

Hinweis-IHC: Antigenmaskierung mit TE-Puffer pH 9,0 empfohlen. (*) Wahlweise kann die Antigenmaskierung auch mit Citratpuffer pH 6,0 erfolgen.

Positivkontrollen:

WB : MCF-7-Zellen, PC-3-Zellen

IHC : humanes Mammakarzinomgewebe, humanes Gliomgewebe, humanes Prostatakarzinomgewebe

IF : HeLa-Zellen,

Hintergrundinformationen

Insulin-like growth factors (IGFs) and their binding proteins (IGFBPs) have important metabolic roles in the human body. IGFBP-2 is a 34 kD IGFBP protein with degraded fragments of 24 kD, 19kd and 15kd. The levels of IGFBP2 are elevated during progression of many human cancers. IGFBP2 is expressed in invasive PAC, whereas its expression in HG-PIN is low. It can be as an Immunohistochemical Marker for Prostatic Adenocarcinoma.

Lagerung

Lagerungsbedingungen:

Bei -20°C lagern. Nach dem Versand ein Jahr lang stabil

Lagerungspuffer:

PBS mit 0.02% Natriumazid und 50% Glycerin pH 7.3.

Aliquotieren ist nicht notwendig bei -20°C Lagerung

*** 20ul-Größen enthalten 0.1% BSA

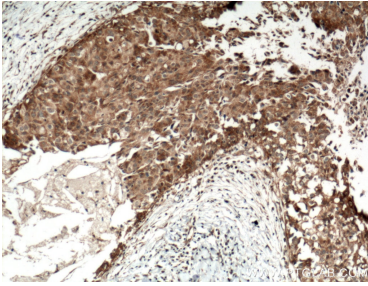
For technical support and original validation data for this product please contact:

T: 1 (888) 4PTGLAB (1-888-478-4522) (toll free in USA), or 1(312) 455-8498 (outside USA)

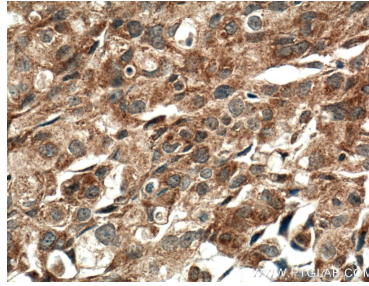
E: proteintech@ptglab.com
W: ptglab.com

This product is exclusively available under Proteintech Group brand and is not available to purchase from any other manufacturer.

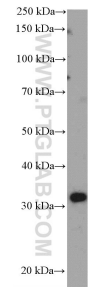
Ausgewählte Validierungsdaten



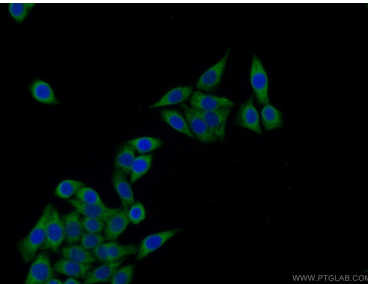
Immunohistochemical analysis of paraffin-embedded human breast cancer tissue slide using 15699-1-AP (IGFBP2 antibody) at dilution of 1:100 (under 10x lens. Heat mediated antigen retrieval with Tris-EDTA buffer (pH 9.0)).



Immunohistochemical analysis of paraffin-embedded human breast cancer tissue slide using 15699-1-AP (IGFBP2 antibody) at dilution of 1:100 (under 40x lens. Heat mediated antigen retrieval with Tris-EDTA buffer (pH 9.0)).



MCF-7 cells were subjected to SDS PAGE followed by western blot with 15699-1-AP (IGFBP2 Antibody) at dilution of 1:600 incubated at room temperature for 1.5 hours.



Immunofluorescent analysis of HeLa cells using 15699-1-AP (IGFBP2 antibody) at dilution of 1:25 and Alexa Fluor 488-conjugated AffiniPure Goat Anti-Rabbit IgG(H+L).