

Nur für Forschungszwecke

S100A8 Polyklonaler Antikörper

Katalog-Nr.:15792-1-AP

Vorgestelltes Produkt

21 Publikationen



Allgemeine Informationen

Katalog-Nr.: 15792-1-AP	GenBank-Zugangsnummer: BC005928	Reinigungsmethode: Antigen-Affinitätsreinigung
Größe: 150ul , Konzentration: 500 µg/ml von Nanodrop;	GeneID (NCBI): 6279	Empfohlene Verdünnungen: WB 1:500-1:1000 IHC 1:200-1:800
Wirt: Kaninchen	Vollständiger Name: S100 calcium binding protein A8	
Isotyp: IgG	Berechnete Masse: 93 aa, 11 kDa	
Immunogen Katalognummer: AG8500	Beobachtete Masse: 11 kDa	

Anwendungen

Geprüfte Anwendungen: FC, IHC, WB, ELISA	Positivkontrollen: WB : THP-1-Zellen, A549-Zellen, COLO 320-Zellen IHC : humanes Magenkrebsgewebe,
In Publikationen genannte Anwendungen: IF, IHC, WB	
Getestete Reaktivität: Human, Maus	
Zitierte Arten: Human, Maus, Ratte	
Hinweis-IHC: Antigenmaskierung mit TE-Puffer pH 9,0 empfohlen. (*) Wahlweise kann die Antigenmaskierung auch mit Citratpuffer pH 6,0 erfolgen.	

Hintergrundinformationen

S100A8 is a member of the S100 family of proteins containing 2 EF-hand calcium-binding motifs. S100 proteins are localized in the cytoplasm and/or nucleus of a wide range of cells, and involved in the regulation of a number of cellular processes such as cell cycle progression and differentiation. S100 genes include at least 13 members which are located as a cluster on chromosome 1q21. This protein may function in the inhibition of casein kinase and as a cytokine. S100A8 may form homodimer or heterodimer with S100A9(16216873).

Bemerkenswerte Veröffentlichungen

Verfasser	Pubmed ID	Journal	Anwendung
Yi-Han Lin	32963032	Mol Cell Proteomics	WB
Li Zhang	32920982	Acta Physiol (Oxf)	WB
Tomomi Morikawa-Ichinose	36100043	Food Chem Toxicol	IF

Lagerung

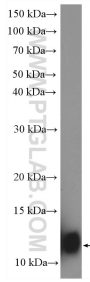
Lagerungsbedingungen:
Bei -20°C lagern. Nach dem Versand ein Jahr lang stabil
Lagerungspuffer:
PBS mit 0.02% Natriumazid und 50% Glycerin pH 7.3.
Aliquotieren ist nicht notwendig bei -20°C Lagerung

*** 20ul-Größen enthalten 0.1% BSA

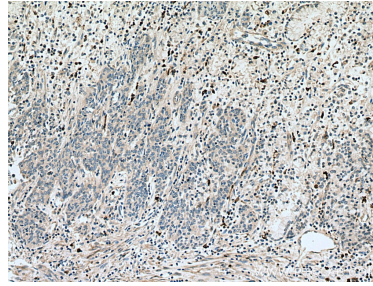
For technical support and original validation data for this product please contact:
T: 1 (888) 4PTGLAB (1-888-478-4522) (toll free in USA), or 1(312) 455-8498 (outside USA)
E: proteintech@ptglab.com
W: ptglab.com

This product is exclusively available under Proteintech Group brand and is not available to purchase from any other manufacturer.

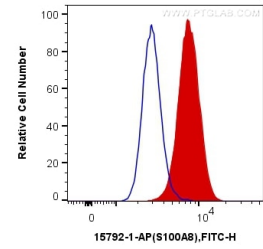
Ausgewählte Validierungsdaten



THP-1 cells were subjected to SDS PAGE followed by western blot with 15792-1-AP (S100A8 antibody) at dilution of 1:600 incubated at room temperature for 1.5 hours.



Immunohistochemical analysis of paraffin-embedded human stomach cancer tissue slide using 15792-1-AP (S100A8 antibody) at dilution of 1:400 (under 10x lens). Heat mediated antigen retrieval with Tris-EDTA buffer (pH 9.0).



1×10^6 RAW 264.7 cells were intracellularly stained with 0.4 ug Anti-Human S100A8 (15792-1-AP) and CoraLite®488-Conjugated AffiniPure Goat Anti-Rabbit IgG(H+L) at dilution 1:1000 (red), or 0.4 ug Control Antibody. Cells were fixed with 4% PFA and permeabilized with Flow Cytometry Perm Buffer (PF00011-C).