

Nur für Forschungszwecke

# RPL29 Polyklonaler Antikörper

Katalog-Nr.:15799-1-AP

4 Publikationen



## Allgemeine Informationen

<b>Katalog-Nr.:</b> 15799-1-AP	<b>GenBank-Zugangsnummer:</b> BC008926	<b>Reinigungsmethode:</b> Antigen-Affinitätsreinigung
<b>Größe:</b> 150ul, Konzentration: 450 µg/ml von Nanodrop;	<b>GeneID (NCBI):</b> 6159	<b>Empfohlene Verdünnungen:</b> WB 1:2000-1:12000 IHC 1:20-1:200 IF 1:200-1:800
<b>Wirt:</b> Kaninchen	<b>Vollständiger Name:</b> ribosomal protein L29	
<b>Isotyp:</b> IgG	<b>Berechnete Masse:</b> 159 aa, 18 kDa	
<b>Immunogen Katalognummer:</b> AG8510	<b>Beobachtete Masse:</b> 20-25 kDa	

## Anwendungen

### Geprüfte Anwendungen:

IF, IHC, WB, ELISA

### In Publikationen genannte Anwendungen:

WB

### Getestete Reaktivität:

Human, Maus, Ratte

### Zitierte Arten:

Human, Maus

### Positivkontrollen:

**WB** : HeLa-Zellen, C6-Zellen, HEK-293T-Zellen, HepG2-Zellen, HUVEC-Zellen, Maus-Pankreasgewebe, NIH/3T3-Zellen

**IHC** : humanes Mammakarzinomgewebe, humanes Leberkarzinomgewebe

**IF** : HepG2-Zellen,

**Hinweis-IHC: Antigenmaskierung mit TE-Puffer pH 9,0 empfohlen. (\*) Wahlweise kann die Antigenmaskierung auch mit Citratpuffer pH 6,0 erfolgen.**

## Hintergrundinformationen

Ribosomal protein L29 (Rpl29) is a component of the large (60S) ribosomal subunit which is abundantly expressed in all cell types, plays a regulatory role in translation efficiency and is essential for protein synthesis (PMID: 17195189). In contrast to adult tissues, RPL29 displays a much more widespread pattern of expression throughout embryonic development, and high levels of RPL29 are found in all developing organs. Several reports showed that RPL29 expression is up-regulated in human carcinomas and constitutes a candidate marker for abnormal growth when overexpressed (PMID: 9788632, 10383165). The antibody can detect the band around 22kDa.

## Bemerkenswerte Veröffentlichungen

Verfasser	Pubmed ID	Journal	Anwendung
Chandreyee Datta	36306353	Sci Adv	WB
Mohammad Ishaque Ali	33004906	Sci Rep	WB
Heeseon An	32612236	Nature	WB

## Lagerung

### Lagerungsbedingungen:

Bei -20°C lagern. Nach dem Versand ein Jahr lang stabil

### Lagerungspuffer:

PBS mit 0.02% Natriumazid und 50% Glycerin pH 7.3.

Aliquotieren ist nicht notwendig bei -20°C Lagerung

\*\*\* 20ul-Größen enthalten 0.1% BSA

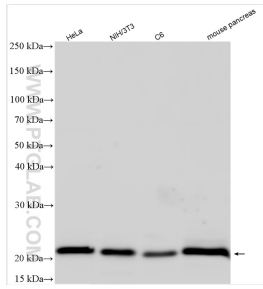
For technical support and original validation data for this product please contact:

T: 1 (888) 4PTGLAB (1-888-478-4522) (toll free in USA), or 1(312) 455-8498 (outside USA)

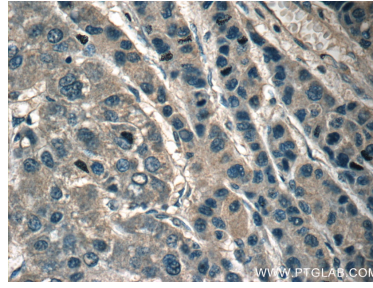
E: proteintech@ptglab.com  
W: ptglab.com

This product is exclusively available under Proteintech Group brand and is not available to purchase from any other manufacturer.

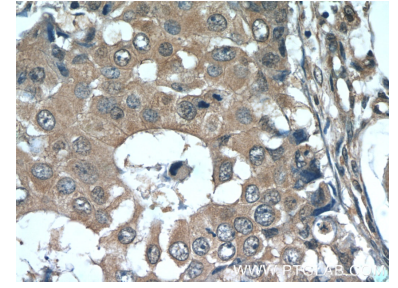
## Ausgewählte Validierungsdaten



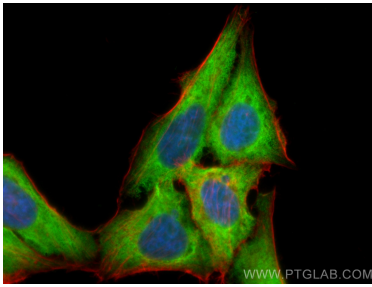
Various lysates were subjected to SDS PAGE followed by western blot with 15799-1-AP (RPL29 antibody) at dilution of 1:6000 incubated at room temperature for 1.5 hours.



Immunohistochemical analysis of paraffin-embedded human liver cancer tissue slide using 15799-1-AP (RPL29 Antibody) at dilution of 1:50 (under 40x lens).



Immunohistochemical analysis of paraffin-embedded human breast cancer tissue slide using 15799-1-AP (RPL29 Antibody) at dilution of 1:50 (under 40x lens).



Immunofluorescent analysis of (4% PFA) fixed HepG2 cells using RPL29 antibody (15799-1-AP) at dilution of 1:400 and CoraLite®488-Conjugated AffiniPure Goat Anti-Rabbit IgG(H+L), CL594-Phalloidin (red).