

Allgemeine Informationen

Katalog-Nr.:
15805-1-AP

Größe:
150ul, Konzentration: 550 µg/ml von
Nanodrop und 193 µg/ml durch die
Bradford-Methode mit BSA als
Standard;

Wirt:
Kaninchen

Isotyp:
IgG

Immunogen Katalognummer:
AG8538

GenBank-Zugangsnummer:
BC018652

GeneID (NCBI):
53826

Vollständiger Name:
FXVD domain containing ion transport
regulator 6

Berechnete Masse:
95 aa, 11 kDa

Beobachtete Masse:
20 kDa

Reinigungsmethode:

Antigen-Affinitätsreinigung

Empfohlene Verdünnungen:

WB 1:500-1:3000

IHC 1:20-1:200

Anwendungen

Geprüfte Anwendungen:

FC, IHC, WB, ELISA

In Publikationen genannte Anwendungen:

IF, WB

Getestete Reaktivität:

Human, Maus, Ratte

Zitierte Arten:

Human, Maus

**Hinweis-IHC: Antigenmaskierung mit TE-
Puffer pH 9,0 empfohlen. (*) Wahlweise
kann die Antigenmaskierung auch mit
Citratpuffer pH 6,0 erfolgen.**

Positivkontrollen:

WB : PC-12-Zellen, humanes Hirngewebe, humanes
Hodengewebe, Maushirngewebe, Rattenhirngewebe,
SH-SY5Y-Zellen

IHC : humanes Hirngewebe, humanes
Eierstockgewebe, humanes Hautgewebe, humanes
Hodengewebe, humanes Lebergewebe, humanes
Milzgewebe

Hintergrundinformationen

The FXVD family is a group of small single-span transmembrane proteins characterized by a signature sequence containing an FXVD motif, two conserved glycines and a serine residue. Members of the FXVD family, including FXVD1 (phospholemman), FXVD2 (gamma subunit of Na,K-ATPase), FXVD3 (Mat8), FXVD4 (CHIF), FXVD5 (RIC), FXVD6 (phosphohippolin) and FXVD7, are tissue specific regulators of the Na,K-ATPase. FXVD6 is primarily expressed in the brain. It modulates the kinetic activity of Na,K-ATPase and has long-term physiological importance in maintaining cation homeostasis. It may play a role in endolymph composition and has a potential important role in neuronal excitability of the CNS during postnatal development and in the adult brain. On the SDS-PAGE FXVD6 migrates with an apparent molecular weight of approximately 20 kDa, which is larger than the calculated molecular weight of 10.5 kDa (PMID: 15193427; 17209044). The gene encodes FXVD6 is located on chromosome 11q23.3, and it might be a susceptibility gene of schizophrenia.

Bemerkenswerte Veröffentlichungen

| Verfasser | Pubmed ID | Journal | Anwendung |
|-------------------|-----------|------------------|-----------|
| Wen Luo | 34212047 | Biomed Res Int | WB |
| Sébastien J Dumas | 31818909 | J Am Soc Nephrol | IF |

Lagerung

Lagerungsbedingungen:

Bei -20°C lagern. Nach dem Versand ein Jahr lang stabil

Lagerungspuffer:

PBS mit 0.02% Natriumazid und 50% Glycerin pH 7.3.

Aliquotieren ist nicht notwendig bei -20°C Lagerung

***** 20ul-Größen enthalten 0.1% BSA**

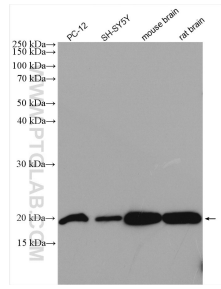
For technical support and original validation data for this product please contact:

T: 1 (888) 4PTGLAB (1-888-478-4522) (toll free
in USA), or 1(312) 455-8498 (outside USA)

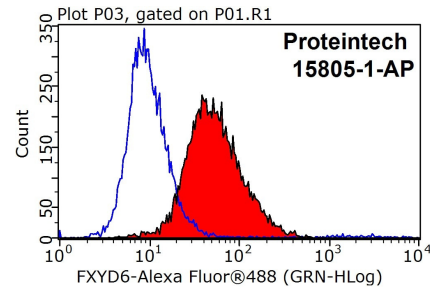
E: proteintech@ptglab.com
W: ptglab.com

**This product is exclusively available under Proteintech
Group brand and is not available to purchase from any
other manufacturer.**

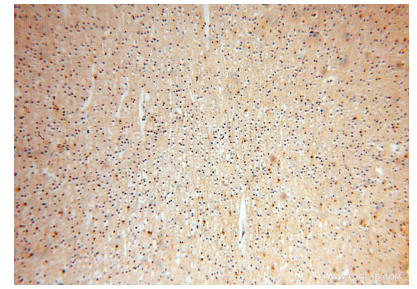
Ausgewählte Validierungsdaten



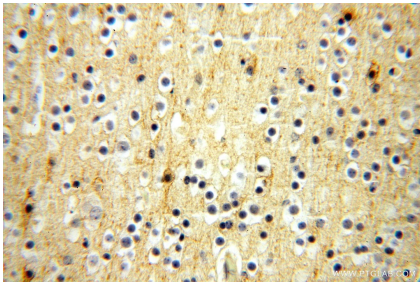
Various lysates were subjected to SDS PAGE followed by western blot with 15805-1-AP (FXD6 antibody) at dilution of 1:1500 incubated at room temperature for 1.5 hours.



1X10⁶ SH-SY5Y cells were stained with 0.2ug FXD6 antibody (15805-1-AP, red) and control antibody (blue). Fixed with 90% MeOH blocked with 3% BSA (30 min). Alexa Fluor 488-conjugated AffiniPure Goat Anti-Rabbit IgG(H+L) with dilution 1:1000.



Immunohistochemical analysis of paraffin-embedded human brain using 15805-1-AP (FXD6 antibody) at dilution of 1:100 (under 10x lens).



Immunohistochemical analysis of paraffin-embedded human brain using 15805-1-AP (FXD6 antibody) at dilution of 1:100 (under 40x lens).