

Nur für Forschungszwecke

PKM1-specific Polyklonaler Antikörper



Katalog-Nr.: 15821-1-AP

Vorgestelltes Produkt

67 Publikationen

Allgemeine Informationen

Katalog-Nr.: 15821-1-AP

Größe: 150ul, Konzentration: 453 µg/ml von Nanodrop;

Wirt: Kaninchen

Isotyp: IgG

GenBank-Zugangsnummer: NM_182470

GeneID (NCBI): 5315

Vollständiger Name: PKM pyruvate kinase, muscle

Berechnete Masse: 58 kDa

Beobachtete Masse: 58 kDa

Reinigungsmethode:

Antigen-Affinitätsreinigung

Empfohlene Verdünnungen:

WB 1:1000-1:4000

IP 0.5-4.0 µg für IP und 1:500-1:2000 für WB

IHC 1:50-1:500

Anwendungen

Geprüfte Anwendungen:

IHC, IP, WB, ELISA

In Publikationen genannte Anwendungen:

CoIP, IF, IHC, IP, WB

Getestete Reaktivität:

Human, Maus, Ratte

Zitierte Arten:

Affe, Human, Maus, Ratte, Rind

Hinweis-IHC: Antigendemaskierung mit TE-Puffer pH 9,0 empfohlen. (*) Wahlweise kann die Antigendemaskierung auch mit Citratpuffer pH 6,0 erfolgen.

Positivkontrollen:

WB: Maus-Skelettmuskelgewebe, Mausherzgewebe, Maushirngewebe, Maus-Kolongewebe, Maus-Muskel-/Lebergewebe, Multizellen/-gewebe, Rattenhirngewebe

IP: Maushirngewebe,

IHC: humanes Gliomgewebe, humanes Herzgewebe, humanes Hirngewebe, humanes Skelettmuskelgewebe, Mausherzgewebe

Hintergrundinformationen

PKM, also named as OIP3, PK2, PK3, PKM, p58, THBP1, CTHBP and Tumor M2-PK, belongs to the pyruvate kinase family. It is glycolytic enzyme that catalyzes the transfer of a phosphoryl group from phosphoenolpyruvate (PEP) to ADP, generating ATP. It stimulates POU5F1-mediated transcriptional activation. PKM plays a general role in caspase independent cell death of tumor cells. PKM has 2 isoforms named PKM1 and PKM2. The primary pyruvate kinase isoform before tumour development is PK-M1; however, the primary isoform from four independent tumours is PK-M2 (PMID:18337823). This antibody is specific to PKM1 isoform.

Bemerkenswerte Veröffentlichungen

Verfasser	Pubmed ID	Journal	Anwendung
Stefano Miglietta	36287116	Noncoding RNA	WB
Bo Ma	30235220	PLoS One	WB
Di Huang	30224822	Nat Immunol	

Lagerung

Lagerungsbedingungen:

Bei -20°C lagern. Nach dem Versand ein Jahr lang stabil

Lagerungspuffer:

PBS mit 0.02% Natriumazid und 50% Glycerin pH 7.3.

Aliquotieren ist nicht notwendig bei -20°C Lagerung

*** 20ul-Größen enthalten 0.1% BSA

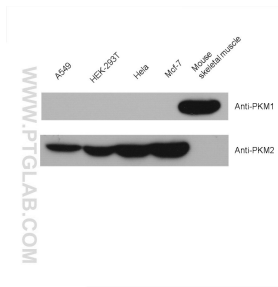
For technical support and original validation data for this product please contact:

T: 1 (888) 4PTGLAB (1-888-478-4522) (toll free in USA), or 1(312) 455-8498 (outside USA)

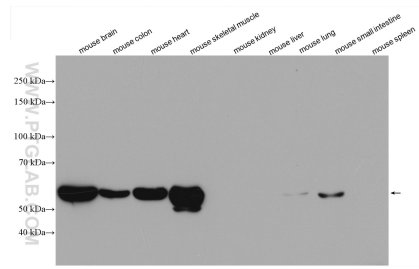
E: proteintech@ptglab.com
W: ptglab.com

This product is exclusively available under Proteintech Group brand and is not available to purchase from any other manufacturer.

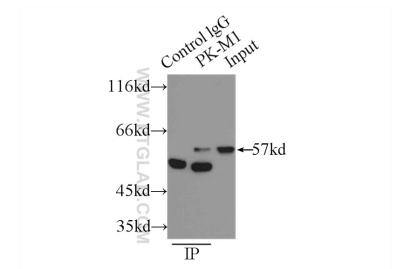
Ausgewählte Validierungsdaten



mouse skeletal muscle tissue were subjected to SDS PAGE followed by western blot with 15821-1-AP (PKM1-specific antibody) at dilution of 1:2000 incubated at room temperature for 1.5 hours.



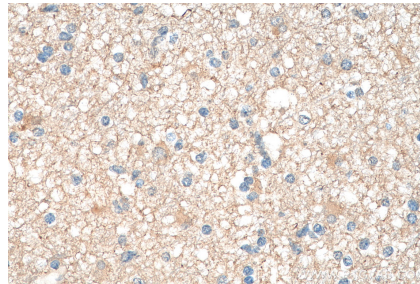
Various lysates were subjected to SDS PAGE followed by western blot with 15821-1-AP (PKM1-specific antibody) at dilution of 1:2000 incubated at room temperature for 1.5 hours.



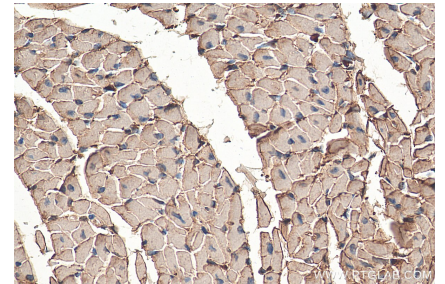
IP Result of anti-PKM1-specific (IP:15821-1-AP, 3ug; Detection:15821-1-AP 1:1000) with mouse brain tissue lysate 4000ug.



Immunohistochemical analysis of paraffin-embedded human gliomas tissue slide using 15821-1-AP (PKM1-specific antibody) at dilution of 1:200 (under 10x lens). Heat mediated antigen retrieval with Tris-EDTA buffer (pH 9.0).



Immunohistochemical analysis of paraffin-embedded human gliomas tissue slide using 15821-1-AP (PKM1-specific antibody) at dilution of 1:200 (under 40x lens). Heat mediated antigen retrieval with Tris-EDTA buffer (pH 9.0).



Immunohistochemical analysis of paraffin-embedded mouse heart tissue slide using 15821-1-AP (PKM1-specific antibody) at dilution of 1:200 (under 40x lens). Heat mediated antigen retrieval with Tris-EDTA buffer (pH 9.0).