

Nur für Forschungszwecke

PKM2-specific Polyklonaler Antikörper



Katalog-Nr.:15822-1-AP

Vorgestelltes Produkt

148 Publikationen

Allgemeine Informationen

Katalog-Nr.:
15822-1-AP

Größe:
150ul, Konzentration: 600 µg/ml von
Nanodrop;

Wirt:
Kaninchen

Isotyp:
IgG

GenBank-Zugangsnummer:
NM_002654

GeneID (NCBI):
5315

Vollständiger Name:
PKM pyruvate kinase, muscle

Berechnete Masse:
58 kDa

Beobachtete Masse:
58 kDa

Reinigungsmethode:
Antigen-Affinitätsreinigung

Empfohlene Verdünnungen:
WB 1:1000-1:4000

IP 0.5-4.0 µg für IP und 1:200-1:1000
für WB

IHC 1:100-1:400
IF 1:10-1:100

Anwendungen

Geprüfte Anwendungen:
IF, IHC, IP, WB, ELISA

In Publikationen genannte Anwendungen:
ChIP, CoIP, IF, IHC, IP, WB

Getestete Reaktivität:
Human, Maus

Zitierte Arten:
Huhn, Human, Maus, Ratte

Hinweis-IHC: Antigendemaskierung mit TE-Puffer pH 9,0 empfohlen. (*) Wahlweise kann die Antigendemaskierung auch mit Citratpuffer pH 6,0 erfolgen.

Positivkontrollen:

WB: A549-Zellen, HEK-293T-Zellen, HEK-293-Zellen, HeLa-Zellen, Maushirngewebe, Maus-Magengewebe, MCF-7-Zellen

IP: MCF-7-Zellen,

IHC: humanes Lungenkarzinomgewebe, humanes Kolonkarzinomgewebe

IF: MCF-7-Zellen,

Hintergrundinformationen

PKM, also named as OIP3, PK2, PK3, PKM, p58, THBP1, CTHBP and Tumor M2-PK, belongs to the pyruvate kinase family. It is glycolytic enzyme that catalyzes the transfer of a phosphoryl group from phosphoenolpyruvate (PEP) to ADP, generating ATP. It stimulates POU5F1-mediated transcriptional activation. PKM plays a general role in caspase independent cell death of tumor cells. PKM has 2 isoforms named as PKM1/M2. The activity of the M2 isoform (but not the M1 isoform) can be inhibited by tyrosine kinase signalling in tumour cells. The primary pyruvate kinase isoform before tumour development is PK-M1; however, the primary isoform from four independent tumours is PK-M2 (PMID:18337823). The immunogen of this antibody is M2 isoform and this antibody is specific to PKM2 isoform.

Bemerkenswerte Veröffentlichungen

Verfasser	Pubmed ID	Journal	Anwendung
Xiao Liang	36212974	Evid Based Complement Alternat Med	IF
Peng Yang	30259036	Food Funct	WB
Stefano Miglietta	36287116	Noncoding RNA	WB

Lagerung

Lagerungsbedingungen:

Bei -20°C lagern. Nach dem Versand ein Jahr lang stabil

Lagerungspuffer:

PBS mit 0.02% Natriumazid und 50% Glycerin pH 7.3.

Aliquotieren ist nicht notwendig bei -20°C Lagerung

*** 20ul-Größen enthalten 0.1% BSA

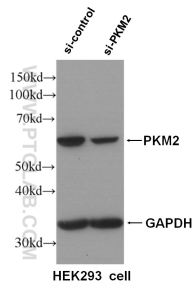
For technical support and original validation data for this product please contact:

T: 1 (888) 4PTGLAB (1-888-478-4522) (toll free in USA), or 1(312) 455-8498 (outside USA)

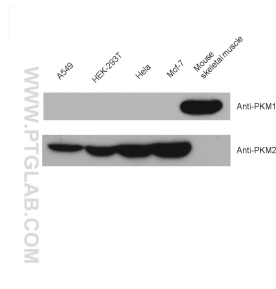
E: proteintech@ptglab.com
W: ptglab.com

This product is exclusively available under Proteintech Group brand and is not available to purchase from any other manufacturer.

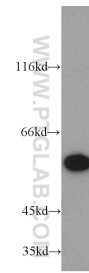
Ausgewählte Validierungsdaten



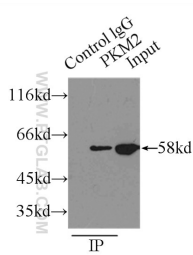
WB result of PKM2 specific antibody (15822-1-AP, 1:5000) with si-control and si-PKM2 transfected HEK293 cells.



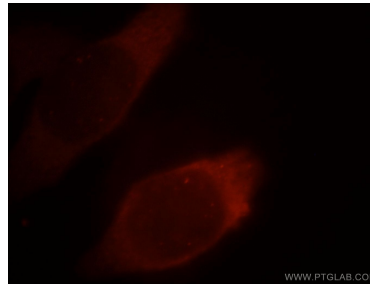
Various lysates were subjected to SDS PAGE followed by western blot with 15822-1-AP (PKM2-specific antibody) at dilution of 1:2000 incubated at room temperature for 1.5 hours.



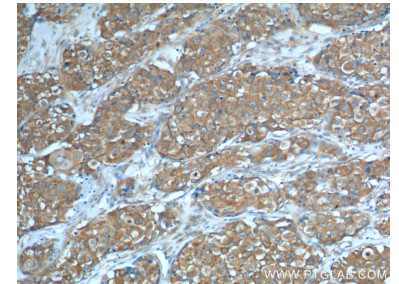
MCF7 cells were subjected to SDS PAGE followed by western blot with 15822-1-AP (PKM2-specific antibody) at dilution of 1:1500 incubated at room temperature for 1.5 hours.



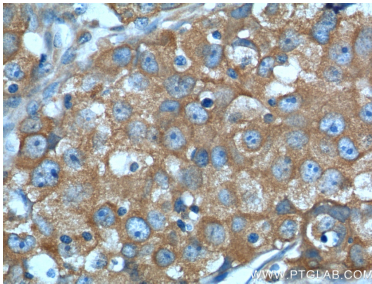
IP Result of anti-PKM2-specific (IP:15822-1-AP, 4ug; Detection:15822-1-AP 1:300) with MCF-7 cells lysate 3250ug.



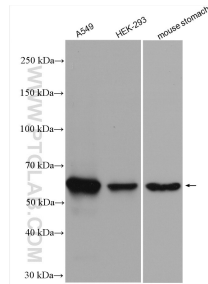
Immunofluorescent analysis of MCF-7 cells, using PKM2 antibody 19060-1-AP at 1:25 dilution and Rhodamine-labeled goat anti-rabbit IgG (red).



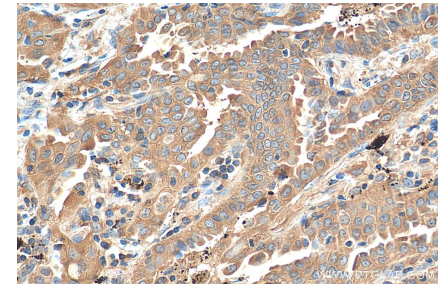
Immunohistochemical analysis of paraffin-embedded human lung cancer tissue slide using 15822-1-AP (PKM2-specific antibody) at dilution of 1:200 (under 10x lens).



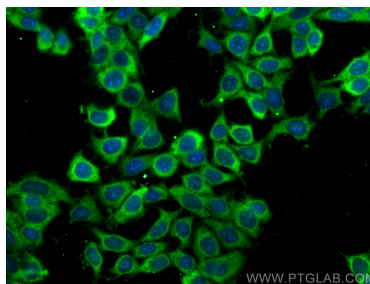
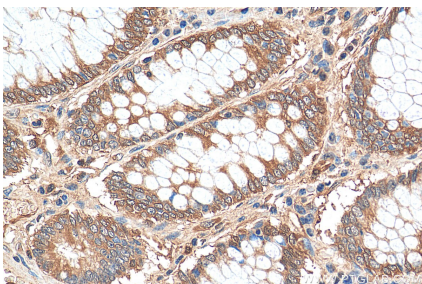
Immunohistochemical analysis of paraffin-embedded human lung cancer tissue slide using 15822-1-AP (PKM2-specific antibody) at dilution of 1:200 (under 40x lens).



Various lysates were subjected to SDS PAGE followed by western blot with 15822-1-AP (PKM2-specific antibody) at dilution of 1:1500 incubated at room temperature for 1.5 hours.



Immunohistochemical analysis of paraffin-embedded human lung cancer tissue slide using 15822-1-AP (PKM2-specific antibody) at dilution of 1:200 (under 40x lens). Heat mediated antigen retrieval with Tris-EDTA buffer (pH 9.0).



Immunohistochemical analysis of paraffin-embedded human colon cancer tissue slide using 15822-1-AP (PKM2-specific antibody) at dilution of 1:200 (under 40x lens). Heat mediated antigen retrieval with Tris-EDTA buffer (pH 9.0).

Immunofluorescent analysis of (-20°C Ethanol) fixed MCF-7 cells using PKM2-specific antibody (15822-1-AP) at dilution of 1:200 and CoraLite®488-Conjugated AffiniPure Goat Anti-Rabbit IgG(H+L).