

Nur für Forschungszwecke

INT11 Polyklonaler Antikörper

Katalog-Nr.:15860-1-AP



Allgemeine Informationen

Katalog-Nr.:
15860-1-AP

Größe:
150ul, Konzentration: 150 µg/ml von
Nanodrop und 133 µg/ml durch die
Bradford-Methode mit BSA als
Standard;

Wirt:
Kaninchen

Isotyp:
IgG

Immunogen Katalognummer:
AG8365

GenBank-Zugangsnummer:
BC007978

GeneID (NCBI):
54973

Vollständiger Name:
cleavage and polyadenylation
specific factor 3-like

Berechnete Masse:
600 aa, 68 kDa

Beobachtete Masse:
68 kDa

Reinigungsmethode:

Antigen-Affinitätsreinigung

Empfohlene Verdünnungen:

WB 1:200-1:1000

IF 1:20-1:200

Anwendungen

Geprüfte Anwendungen:

IF, WB, ELISA

Getestete Reaktivität:

Human, Maus

Positivkontrollen:

WB : Maus-Kolongewebe, Mausmilzgewebe

IF : HepG2-Zellen,

Hintergrundinformationen

Integrator complex subunit 11 (INT11) is a protein that in humans is encoded by the INTS11 gene. INTS11, also known as Cleavage and Polyadenylation Specific Factor 3-Like (CPSF3L), contains a metallo-β-lactamase and β-CASP domain that, together, coordinate two zinc ions within the active site to promote its RNA endonuclease activity. INTS11 is the catalytic subunit of the Integrator (INT) complex, which is crucial for the biogenesis of small nuclear RNAs and enhancer RNAs. INT11 has 5 isoforms with the molecular mass of 56 and 65-68 kDa (PMID: 34516911, PMID: 37054711).

Lagerung

Lagerungsbedingungen:

Bei -20°C lagern. Nach dem Versand ein Jahr lang stabil

Lagerungspuffer:

PBS mit 0.02% Natriumazid und 50% Glycerin pH 7.3.

Aliquotieren ist nicht notwendig bei -20°C Lagerung

***** 20ul-Größen enthalten 0.1% BSA**

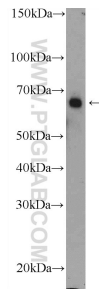
For technical support and original validation data for this product please contact:

T: 1 (888) 4PTGLAB (1-888-478-4522) (toll free
in USA), or 1(312) 455-8498 (outside USA)

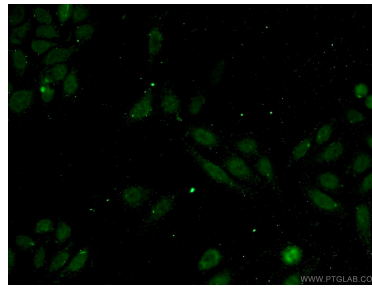
E: proteintech@ptglab.com
W: ptglab.com

This product is exclusively available under Proteintech Group brand and is not available to purchase from any other manufacturer.

Ausgewählte Validierungsdaten



mouse colon tissue were subjected to SDS PAGE followed by western blot with 15860-1-AP (INT 11 Antibody) at dilution of 1:300 incubated at room temperature for 1.5 hours.



Immunofluorescent analysis of HepG2 cells using 15860-1-AP (INT 11 antibody) at dilution of 1:50 and Alexa Fluor 488-conjugated AffiniPure Goat Anti-Rabbit IgG(H+L).