

## Allgemeine Informationen

**Katalog-Nr.:**  
15865-1-AP

**Größe:**  
150ul , Konzentration: 260 µg/ml von Nanodrop und 187 µg/ml durch die Bradford-Methode mit BSA als Standard;

**Wirt:**  
Kaninchen

**Isotyp:**  
IgG

**Immunogen Katalognummer:**  
AG8477

**GenBank-Zugangsnummer:**  
BC008481

**GeneID (NCBI):**  
10486

**Vollständiger Name:**  
CAP, adenylate cyclase-associated protein, 2 (yeast)

**Berechnete Masse:**  
477 aa, 53 kDa

**Beobachtete Masse:**  
53 kDa

**Reinigungsmethode:**

Antigen-Affinitätsreinigung

**Empfohlene Verdünnungen:**

WB 1:1000-1:6000

IP 0.5-4.0 ug für IP und 1:500-1:2000

für WB

IHC 1:20-1:200

IF 1:50-1:500

## Anwendungen

**Geprüfte Anwendungen:**

IF, IHC, IP, WB, ELISA

**In Publikationen genannte Anwendungen:**

IF, WB

**Getestete Reaktivität:**

Human, Maus, Ratte

**Zitierte Arten:**

Human, Maus, Ratte

**Hinweis-IHC: Antigendemaskierung mit TE-Puffer pH 9,0 empfohlen. (\*) Wahlweise kann die Antigendemaskierung auch mit Citratpuffer pH 6,0 erfolgen.**

**Positivkontrollen:**

**WB :** PC-3-Zellen, HepG2-Zellen, humanes Nierengewebe, Mausherzgewebe, Maushodengewebe, Mausnierengewebe, Maus-Skelettmuskelgewebe, Rattenhodengewebe

**IP :** Maushodengewebe,

**IHC :** humanes Leberkarzinomgewebe, humanes Skelettmuskelgewebe

**IF :** U2OS-Zellen,

## Hintergrundinformationen

CAPs (CAP1 and CAP2) are evolutionarily conserved proteins with roles in regulating the actin cytoskeleton and in signal transduction. CAP2 is predominantly expressed in brain, heart and skeletal muscle, and skin. It is found in the nucleus in undifferentiated myoblasts and at the M-line of differentiated myotubes. Overexpression of CAP2 has been reported in many cancers, including hepatocellular carcinoma (HCC), human breast cancer, and malignant melanoma.

## Bemerkenswerte Veröffentlichungen

Verfasser	Pubmed ID	Journal	Anwendung
Mert Colpan	33742108	Commun Biol	WB,IF
Anna Di Maio	35163460	Int J Mol Sci	WB
Lara-Jane Kepser	33637797	Sci Rep	WB

## Lagerung

**Lagerungsbedingungen:**

Bei -20°C lagern. Nach dem Versand ein Jahr lang stabil

**Lagerungspuffer:**

PBS mit 0.02% Natriumazid und 50% Glycerin pH 7.3.

Aliquotieren ist nicht notwendig bei -20°C Lagerung

**\*\*\* 20ul-Größen enthalten 0.1% BSA**

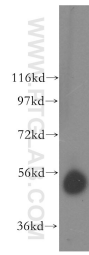
For technical support and original validation data for this product please contact:

T: 1 (888) 4PTGLAB (1-888-478-4522) (toll free in USA), or 1(312) 455-8498 (outside USA)

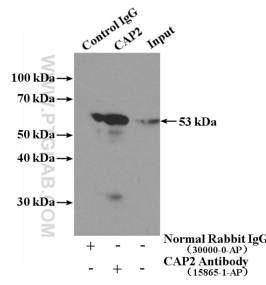
E: [proteintech@ptglab.com](mailto:proteintech@ptglab.com)  
W: [ptglab.com](http://ptglab.com)

**This product is exclusively available under Proteintech Group brand and is not available to purchase from any other manufacturer.**

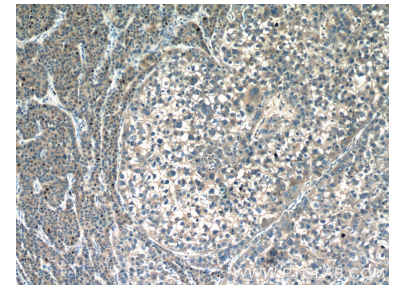
## Ausgewählte Validierungsdaten



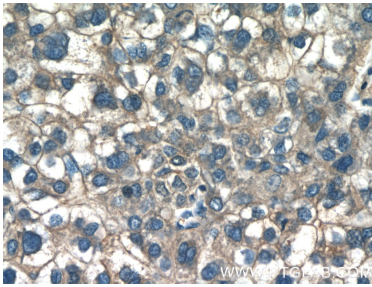
human kidney tissue were subjected to SDS PAGE followed by western blot with 15865-1-AP (CAP2 antibody) at dilution of 1:400 incubated at room temperature for 1.5 hours.



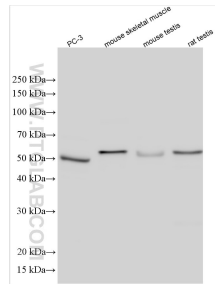
IP Result of anti-CAP2 (IP:15865-1-AP, 4ug; Detection:15865-1-AP 1:1000) with mouse testis tissue lysate 4000ug.



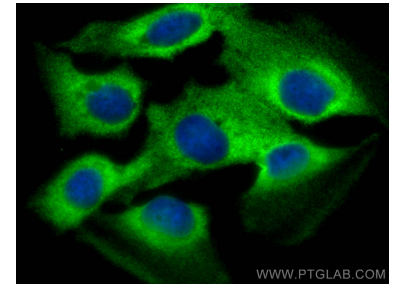
Immunohistochemical analysis of paraffin-embedded human liver cancer tissue slide using 15865-1-AP (CAP2 Antibody) at dilution of 1:50 (under 10x lens).



Immunohistochemical analysis of paraffin-embedded human liver cancer tissue slide using 15865-1-AP (CAP2 Antibody) at dilution of 1:50 (under 40x lens).



Various lysates were subjected to SDS PAGE followed by western blot with 15865-1-AP (CAP2 antibody) at dilution of 1:3000 incubated at room temperature for 1.5 hours.



Immunofluorescent analysis of (-20°C Methanol) fixed U2OS cells using CAP2 antibody (15865-1-AP) at dilution of 1:200 and CoraLite®488-Conjugated AffiniPure Goat Anti-Rabbit IgG(H+L).