

Nur für Forschungszwecke

SPANXE Polyklonaler Antikörper

Katalog-Nr.:15870-1-AP



Allgemeine Informationen

Katalog-Nr.: 15870-1-AP	GenBank-Zugangsnummer: BC005382	Reinigungsmethode: Antigen-Affinitätsreinigung
Größe: 150ul , Konzentration: 150 µg/ml von Nanodrop und 147 µg/ml durch die Bradford-Methode mit BSA als Standard;	GeneID (NCBI): 171489	Empfohlene Verdünnungen: WB 1:200-1:1000 IF 1:20-1:200
Wirt: Kaninchen	Vollständiger Name: SPANX family, member E	
Isotyp: IgG	Berechnete Masse: 97 aa, 11 kDa	
Immunogen Katalognummer: AG8572	Beobachtete Masse: 15-20 kDa	

Anwendungen

Geprüfte Anwendungen: IF, WB, ELISA	Positivkontrollen: WB : A375-Zellen, Maushautgewebe
Getestete Reaktivität: Human	IF : A375-Zellen,

Hintergrundinformationen

SPANXE (Sperm protein associated with the nucleus on the X chromosome E), also known as SPANX A2 or SPANX C, is a member of the SPANX family. The SPANX genes encode differentially expressed testis-specific proteins that localize to various subcellular compartments. This particular gene encodes a sperm protein that contains a consensus nuclear localization signal but, although a role in spermatogenesis is suggested, the specific function of this family member has not yet been determined.

Lagerung

Lagerungsbedingungen:
Bei -20°C lagern. Nach dem Versand ein Jahr lang stabil

Lagerungspuffer:
PBS mit 0.02% Natriumazid und 50% Glycerin pH 7.3.

Aliquotieren ist nicht notwendig bei -20°C Lagerung

***** 20ul-Größen enthalten 0.1% BSA**

For technical support and original validation data for this product please contact:

T: 1 (888) 4PTGLAB (1-888-478-4522) (toll free in USA), or 1(312) 455-8498 (outside USA)

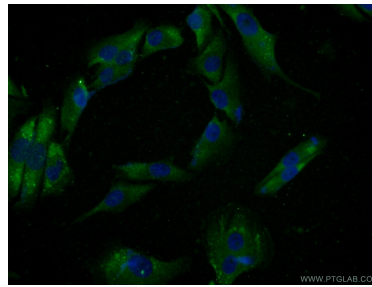
E: proteintech@ptglab.com
W: ptglab.com

This product is exclusively available under Proteintech Group brand and is not available to purchase from any other manufacturer.

Ausgewählte Validierungsdaten



A375 cells were subjected to SDS PAGE followed by western blot with 15870-1-AP (SPANXE antibody) at dilution of 1:300 incubated at room temperature for 1.5 hours.



Immunofluorescent analysis of A375 cells using 15870-1-AP (SPANXE antibody) at dilution of 1:50 and Alexa Fluor 488-conjugated AffiniPure Goat Anti-Rabbit IgG(H+L).