

Nur für Forschungszwecke

RAB11A/B Polyklonaler Antikörper

Katalog-Nr.:15903-1-AP

Vorgestelltes Produkt

25 Publikationen



Allgemeine Informationen

Katalog-Nr.:
15903-1-AP

Größe:
150ul, Konzentration: 400 µg/ml von
Nanodrop und 267 µg/ml durch die
Bradford-Methode mit BSA als
Standard;

Wirt:
Kaninchen

Isotyp:
IgG

Immunogen Katalognummer:
AG8742

GenBank-Zugangsnummer:
BC013348

GeneID (NCBI):
8766

Vollständiger Name:
RAB11A, member RAS oncogene
family

Berechnete Masse:
216 aa, 24 kDa

Beobachtete Masse:
24 kDa

Reinigungsmethode:

Antigen-Affinitätsreinigung

Empfohlene Verdünnungen:

WB 1:500-1:2000
IP 0.5-4.0 ug für IP und 1:500-1:1000
für WB
IHC 1:50-1:500
IF 1:200-1:800

Anwendungen

Geprüfte Anwendungen:

IF, IHC, IP, WB, ELISA

In Publikationen genannte Anwendungen:

CoIP, IF, IHC, WB

Getestete Reaktivität:

Human, Maus

Zitierte Arten:

Affe, Hausschwein, Human, Hund, Maus

Hinweis-IHC: Antigendemaskierung mit TE-Puffer pH 9,0 empfohlen. (*) Wahlweise kann die Antigendemaskierung auch mit Citratpuffer pH 6,0 erfolgen.

Positivkontrollen:

WB: Mausmilzgewebe, HeLa-Zellen, Jurkat-Zellen, MCF-7-Zellen, SH-SY5Y-Zellen

IP: Mausmilzgewebe,

IHC: humanes Herzgewebe,

IF: A549-Zellen,

Hintergrundinformationen

RAB11 has two isoform genes RAB11A(YL8) and RAB11B(YPT3), and belongs to the small GTPase superfamily and Rab family. It regulates endocytic recycling. RAB11 may exert its functions by interacting with multiple effector proteins in different complexes. It acts as a major regulator of membrane delivery during cytokinesis. RAB11 regulates the recycling of FCGRT (receptor of Fc region of monomeric Ig G) to basolateral membranes. This antibody can recognize both RAB11A(24 kDa) and RAB11B(24 kDa).

Bemerkenswerte Veröffentlichungen

Verfasser	Pubmed ID	Journal	Anwendung
Jiang Du	33178272	J Oncol	WB,IHC
Yu Lian	30326930	J Exp Clin Cancer Res	WB
Wai Wa Ray Chan	33047393	FASEB J	WB,IF

Lagerung

Lagerungsbedingungen:

Bei -20°C lagern. Nach dem Versand ein Jahr lang stabil

Lagerungspuffer:

PBS mit 0.02% Natriumazid und 50% Glycerin pH 7.3.

Aliquotieren ist nicht notwendig bei -20°C Lagerung

*** 20ul-Größen enthalten 0.1% BSA

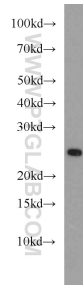
For technical support and original validation data for this product please contact:

T: 1 (888) 4PTGLAB (1-888-478-4522) (toll free in USA), or 1(312) 455-8498 (outside USA)

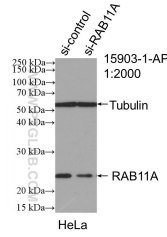
E: proteintech@ptglab.com
W: ptglab.com

This product is exclusively available under Proteintech Group brand and is not available to purchase from any other manufacturer.

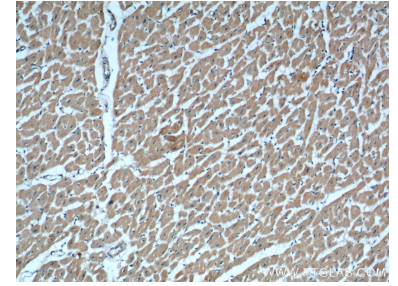
Ausgewählte Validierungsdaten



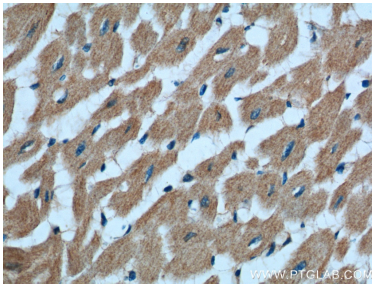
mouse spleen tissue were subjected to SDS PAGE followed by western blot with 15903-1-AP (RAB11A/B antibody) at dilution of 1:1000 incubated at room temperature for 1.5 hours.



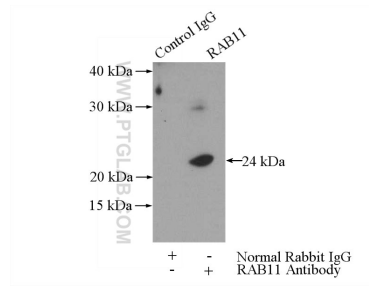
WB result of RAB11A/B antibody (15903-1-AP; 1:2000; incubated at room temperature for 1.5 hours) with sh-Control and sh-RAB11A/B transfected HeLa cells.



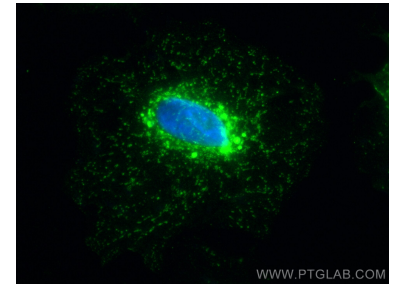
Immunohistochemical analysis of paraffin-embedded human heart tissue slide using 15903-1-AP (RAB11A/B antibody at dilution of 1:200 (under 10x lens).



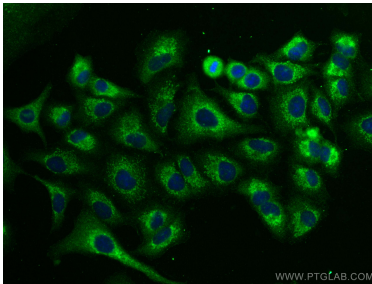
Immunohistochemical analysis of paraffin-embedded human heart tissue slide using 15903-1-AP (RAB11A/B antibody at dilution of 1:200 (under 40x lens).



IP Result of anti-RAB11A/B (IP:15903-1-AP, 3ug; Detection:15903-1-AP 1:500) with mouse spleen tissue lysate 4000ug.



Immunofluorescent analysis of (-20°C Methanol) fixed A549 cells using RAB11A/B antibody (15903-1-AP) at dilution of 1:400 and CoraLite®488-Conjugated AffiniPure Goat Anti-Rabbit IgG(H+L).



Immunofluorescent analysis of (-20°C Methanol) fixed A549 cells using RAB11A/B antibody (15903-1-AP) at dilution of 1:400 and CoraLite®488-Conjugated AffiniPure Goat Anti-Rabbit IgG(H+L).