

Nur für Forschungszwecke

MDH1 Polyklonaler Antikörper

Katalog-Nr.:15904-1-AP

Vorgestelltes Produkt

19 Publikationen



Allgemeine Informationen

Katalog-Nr.: 15904-1-AP	GenBank-Zugangsnummer: BC001484	Reinigungsmethode: Antigen-Affinitätsreinigung
Größe: 150ul , Konzentration: 450 µg/ml von Nanodrop;	GeneID (NCBI): 4190	Empfohlene Verdünnungen: WB 1:5000-1:50000
Wirt: Kaninchen	Vollständiger Name: malate dehydrogenase 1, NAD (soluble)	IP 0.5-4.0 ug für IP und 1:5000-1:50000 für WB
Isotyp: IgG	Berechnete Masse: 334 aa, 36 kDa	IHC 1:50-1:500 IF 1:10-1:100
Immunogen Katalognummer: AG8744	Beobachtete Masse: 36 kDa	

Anwendungen

Geprüfte Anwendungen:
FC, IF, IHC, IP, WB, ELISA

In Publikationen genannte Anwendungen:
IF, IHC, IP, WB

Getestete Reaktivität:
Human, Maus, Ratte

Zitierte Arten:
Human, Maus, Ratte

Hinweis-IHC: Antigenmaskierung mit TE-Puffer pH 9,0 empfohlen. (*) Wahlweise kann die Antigenmaskierung auch mit Citratpuffer pH 6,0 erfolgen.

Positivkontrollen:

WB: HepG2-Zellen, HEK-293-Zellen, HL-60-Zellen, Mauslebergewebe, Rattenlebergewebe

IP: HepG2-Zellen,

IHC: humanes Nierenzellkarzinomgewebe, humanes Leberkarzinomgewebe, Mausnierengewebe, Rattenherzgewebe

IF: HepG2-Zellen,

Hintergrundinformationen

MDH1 (Malate dehydrogenase, cytoplasmic) is also named as MDHA and belongs to the LDH/MDH superfamily and MDH type 2 family which catalyzes the reversible oxidation of malate to oxaloacetate, utilizing the NAD/NADH cofactor system in the citric acid cycle. It can exist as a dimer and the dimeric MDH1 is the mitochondrial isoenzyme, whereas the tetrameric MDH2 is the glycosomal isoenzyme.(PMID:10693743)

Bemerkenswerte Veröffentlichungen

Verfasser	Pubmed ID	Journal	Anwendung
Teresa W-M Fan	36150727	J Immunol	
Xiaoyu Ma	25301052	Nat Commun	WB
Jia-Yuan Zhang	34012073	Cell Res	WB

Lagerung

Lagerungsbedingungen:

Bei -20°C lagern. Nach dem Versand ein Jahr lang stabil

Lagerungspuffer:

PBS mit 0.02% Natriumazid und 50% Glycerin pH 7.3.

Aliquotieren ist nicht notwendig bei -20°C Lagerung

*** 20ul-Größen enthalten 0.1% BSA

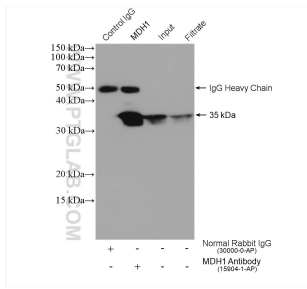
For technical support and original validation data for this product please contact:

T: 1 (888) 4PTGLAB (1-888-478-4522) (toll free in USA), or 1(312) 455-8498 (outside USA)

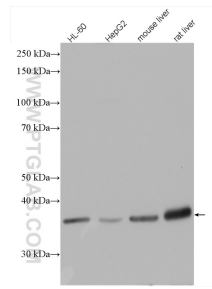
E: proteintech@ptglab.com
W: ptglab.com

This product is exclusively available under Proteintech Group brand and is not available to purchase from any other manufacturer.

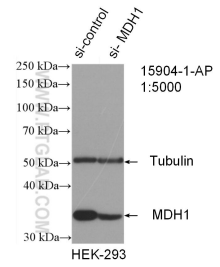
Ausgewählte Validierungsdaten



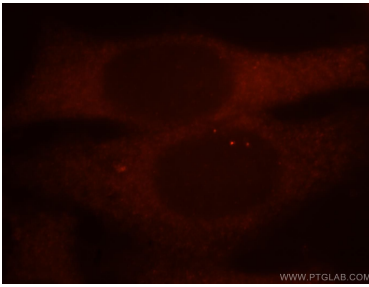
IP result of anti-MDH1 (IP:15904-1-AP, 4ug; Detection:15904-1-AP 1:10000) with HepG2 cells lysate 960 ug.



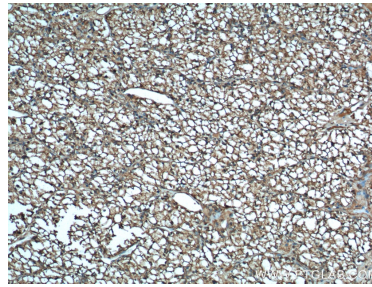
HepG2 cells were subjected to SDS PAGE followed by western blot with 15904-1-AP (MDH1 antibody) at dilution of 1:15000 incubated at room temperature for 1.5 hours.



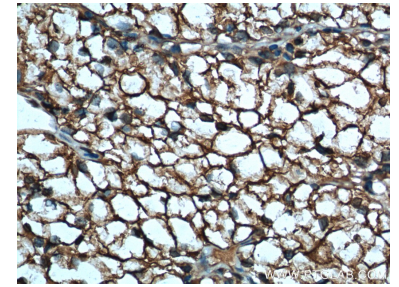
WB result of MDH1 antibody (15904-1-AP; 1:5000; incubated at room temperature for 1.5 hours) with sh-Control and sh-MDH1 transfected HEK-293 cells.



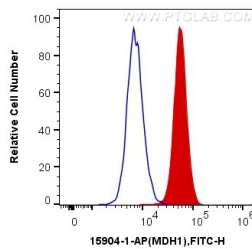
Immunofluorescent analysis of HepG2 cells, using MDH1 antibody 15904-1-AP at 1:25 dilution and Rhodamine-labeled goat anti-rabbit IgG (red).



Immunohistochemical analysis of paraffin-embedded human renal cell carcinoma tissue slide using 15904-1-AP (MDH1 Antibody) at dilution of 1:100 (under 10x lens). Heat mediated antigen retrieval with Tris-EDTA buffer (pH 9.0).



Immunohistochemical analysis of paraffin-embedded human renal cell carcinoma tissue slide using 15904-1-AP (MDH1 Antibody) at dilution of 1:100 (under 40x lens). Heat mediated antigen retrieval with Tris-EDTA buffer (pH 9.0).



1×10^6 HepG2 cells were intracellularly stained with 0.4 ug Anti-Human MDH1 (15904-1-AP) and CoraLite®488-Conjugated AffiniPure Goat Anti-Rabbit IgG(H+L) at dilution 1:1000 (red), or 0.4 ug x. Cells were fixed with 4% PFA and permeabilized with Flow Cytometry Perm Buffer (PF00011-C).