

Nur für Forschungszwecke

ALDH1A1 Polyklonaler Antikörper

Katalog-Nr.:15910-1-AP

105 Publikationen



Allgemeine Informationen

Katalog-Nr.: 15910-1-AP	GenBank-Zugangsnummer: BC001505	Reinigungsmethode: Antigen-Affinitätsreinigung
Größe: 150ul , Konzentration: 450 µg/ml von Nanodrop;	GeneID (NCBI): 216	Empfohlene Verdünnungen: WB 1:1000-1:4000 IP 0.5-4.0 ug für IP und 1:5000-1:50000 für WB
Wirt: Kaninchen	Vollständiger Name: aldehyde dehydrogenase 1 family, member A1	IHC 1:50-1:500 IF 1:50-1:500
Isotyp: IgG	Berechnete Masse: 501 aa, 55 kDa	
Immunogen Katalognummer: AG8665	Beobachtete Masse: 50-55 kDa	

Anwendungen

Geprüfte Anwendungen:
FC, IF, IHC, IP, WB, ELISA

In Publikationen genannte Anwendungen:
ELISA, IF, IHC, WB

Getestete Reaktivität:
Human, Maus, Ratte

Zitierte Arten:
Human, Maus, Ratte, Rind

Hinweis-IHC: Antigenemaskierung mit TE-Puffer pH 9,0 empfohlen. (*) Wahlweise kann die Antigenemaskierung auch mit Citratpuffer pH 6,0 erfolgen.

Positivkontrollen:

WB : K-562-Zellen, Maushirngewebe, Mauslebergewebe, Mausnierengewebe, Rattenlebergewebe

IP : Mauslebergewebe,

IHC : Maushodengewebe, humanes Lebergewebe

IF : Maus-Kolongewebe, HepG2-Zellen, Maushodengewebe

Hintergrundinformationen

ALDH1A1(Aldehyde dehydrogenase family 1 member A1), also named as ALDC, ALDH1 and PUMB1, belongs to the aldehyde dehydrogenase family. The ALDH1A1 gene encodes a liver cytosolic isoform of acetaldehyde dehydrogenase, an enzyme involved in the major pathway of alcohol metabolism after alcohol dehydrogenase. ALDH1A1 plays a critical role in protection against oxidative stress-induced cytotoxicity in lens epithelial cells(PMID:19296407). And it is important for multiple biological activities including drug resistance, cell differentiation, and oxidative stress response(PMID:19025616). As a novel cancer stem cell marker, ALDH1A1 can be used for tumors whose corresponding normal tissues express ALDH1 in relatively restricted or limited levels such as breast, lung, ovarian or colon cancer(PMID: 20422001). This antibody can also recognize some other membranes of the aldehyde dehydrogenase family.

Bemerkenswerte Veröffentlichungen

Verfasser	Pubmed ID	Journal	Anwendung
Lei Liu	30273566	Chem Biol Interact	WB
XIAOYUE FENG	34528694	Oncol Rep	WB
Maria Laura Tognoli	34532864	EMBO J	IF

Lagerung

Lagerungsbedingungen:

Bei -20°C lagern. Nach dem Versand ein Jahr lang stabil

Lagerungspuffer:

PBS mit 0.02% Natriumazid und 50% Glycerin pH 7.3.

Aliquotieren ist nicht notwendig bei -20°C Lagerung

***** 20ul-Größen enthalten 0.1% BSA**

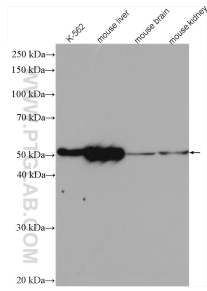
For technical support and original validation data for this product please contact:

T: 1 (888) 4PTGLAB (1-888-478-4522) (toll free in USA), or 1(312) 455-8498 (outside USA)

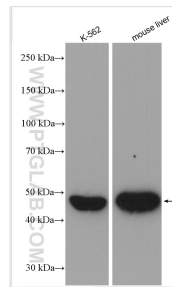
E: proteintech@ptglab.com
W: ptglab.com

This product is exclusively available under Proteintech Group brand and is not available to purchase from any other manufacturer.

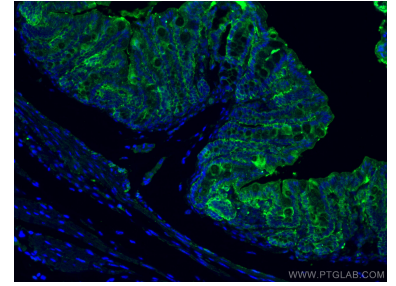
Ausgewählte Validierungsdaten



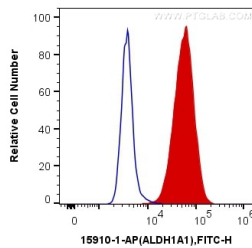
Various lysates were subjected to SDS PAGE followed by western blot with 15910-1-AP (ALDH1A1 antibody) at dilution of 1:2000 incubated at room temperature for 1.5 hours.



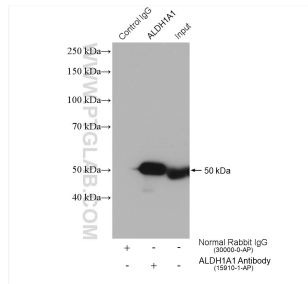
Various lysates were subjected to SDS PAGE followed by western blot with 15910-1-AP (ALDH1A1 antibody) at dilution of 1:8000 incubated at room temperature for 1.5 hours.



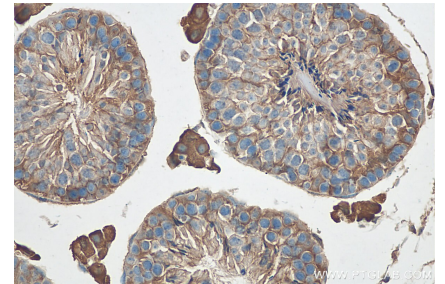
Immunofluorescent analysis of (4% PFA) fixed mouse colon tissue using 15910-1-AP (ALDH1A1 antibody), at dilution of 1:100 and CoraLite® 488-Conjugated AffiniPure Goat Anti-Rabbit IgG(H+L).



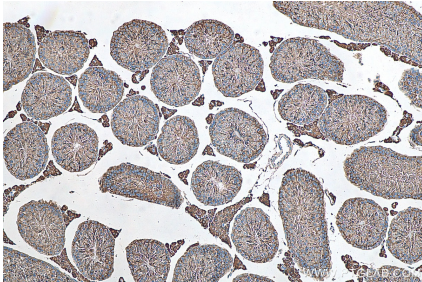
1X10⁶ HepG2 cells were intracellularly stained with 0.2 ug Anti-Human ALDH1A1 (15910-1-AP) and CoraLite®488-Conjugated AffiniPure Goat Anti-Rabbit IgG(H+L) at dilution 1:1000 (red), or 0.2 ug Control Antibody. Cells were fixed with 4% PFA and permeabilized with Flow Cytometry Perm Buffer (PF00011-C).



IP result of anti-ALDH1A1(IP:15910-1-AP, 4ug; Detection:15910-1-AP 1:10000) with mouse liver tissue lysate 3040 ug.



Immunohistochemical analysis of paraffin-embedded mouse testis tissue slide using 15910-1-AP (ALDH1A1 antibody) at dilution of 1:200 (under 40x lens). Heat mediated antigen retrieval with Tris-EDTA buffer (pH 9.0).



Immunohistochemical analysis of paraffin-embedded mouse testis tissue slide using 15910-1-AP (ALDH1A1 antibody) at dilution of 1:200 (under 10x lens). Heat mediated antigen retrieval with Tris-EDTA buffer (pH 9.0).