

Allgemeine Informationen

Katalog-Nr.:

15914-1-AP

Größe:

150ul , Konzentration: 600 µg/ml von 1503 Nanodrop und 267 µg/ml durch die Bradford-Methode mit BSA als Standard;

Wirt:

Kaninchen

Isotyp:

IgG

Immunogen Katalognummer:

AG8707

GenBank-Zugangsnummer:

BC009408

GeneID (NCBI):

1503

Vollständiger Name:

CTP synthase

Berechnete Masse:

591 aa, 67 kDa

Beobachtete Masse:

67 kDa

Reinigungsmethode:

Antigen-Affinitätsreinigung

Empfohlene Verdünnungen:

WB 1:1000-1:6000

IP 0.5-4.0 ug für IP und 1:500-1:1000

für WB

IHC 1:50-1:500

IF 1:10-1:100

Anwendungen

Geprüfte Anwendungen:

FC, IF, IHC, IP, WB, ELISA

In Publikationen genannte Anwendungen:

CoIP, IF, IHC, WB

Getestete Reaktivität:

Human

Zitierte Arten:

Human, Maus, Stechmücke, Zebrafisch

Hinweis-IHC: Antigendemaskierung mit TE-Puffer pH 9,0 empfohlen. (*) Wahlweise kann die Antigendemaskierung auch mit Citratpuffer pH 6,0 erfolgen.

Positivkontrollen:

WB : HEK-293-Zellen, HeLa-Zellen, HepG2-Zellen, Raji-Zellen

IP : HeLa-Zellen,

IHC : humanes Leberkarzinomgewebe,

IF : HepG2-Zellen,

Hintergrundinformationen

CTP synthase(CTPS) is also named as CTPS1 and belongs to the CTP synthase family. It catalyses the ATP-dependent formation of CTP from UTP using either L-glutamine or NH₃ as the nitrogen source(PMID:12752439). It is important in the biosynthesis of phospholipids and nucleic acids, and plays a key role in cell growth, development, and tumorigenesis (PMID:8813694). CTP synthetase exists as a dimer in the absence of its substrates ATP and UTP, but in the presence of saturating concentrations of these substrates the enzyme exists as a tetramer. (PMID:18439916)

Bemerkenswerte Veröffentlichungen

Verfasser	Pubmed ID	Journal	Anwendung
Chia-Chun Chang	29097181	Exp Cell Res	IF
Yi-Fan Fang	36233000	Int J Mol Sci	IF
Otávio Cabral-Marques	31849949	Front Immunol	

Lagerung

Lagerungsbedingungen:

Bei -20°C lagern. Nach dem Versand ein Jahr lang stabil

Lagerungspuffer:

PBS mit 0.02% Natriumazid und 50% Glycerin pH 7.3.

Aliquotieren ist nicht notwendig bei -20°C Lagerung

*** 20ul-Größen enthalten 0.1% BSA

For technical support and original validation data for this product please contact:

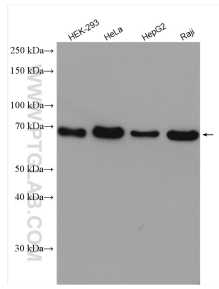
T: 1 (888) 4PTGLAB (1-888-478-4522) (toll free in USA), or 1(312) 455-8498 (outside USA)

E: proteintech@ptglab.com

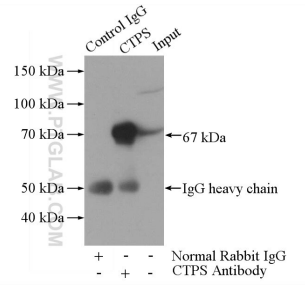
W: ptglab.com

This product is exclusively available under Proteintech Group brand and is not available to purchase from any other manufacturer.

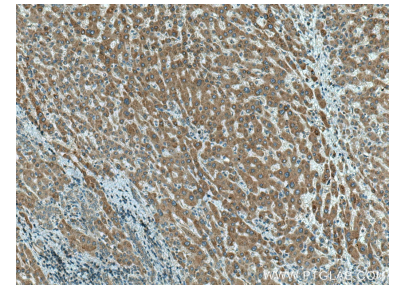
Ausgewählte Validierungsdaten



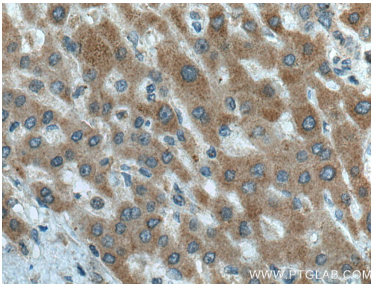
Various lysates were subjected to SDS PAGE followed by western blot with 15914-1-AP (CTP synthase antibody) at dilution of 1:3000 incubated at room temperature for 1.5 hours.



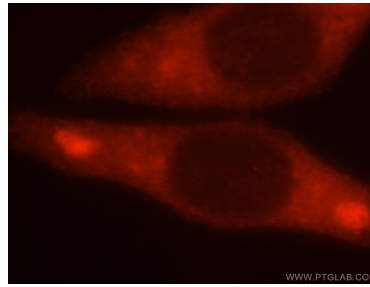
IP Result of anti-CTP synthase (IP:15914-1-AP, 4ug; Detection:15914-1-AP 1:500) with HeLa cells lysate 1200ug.



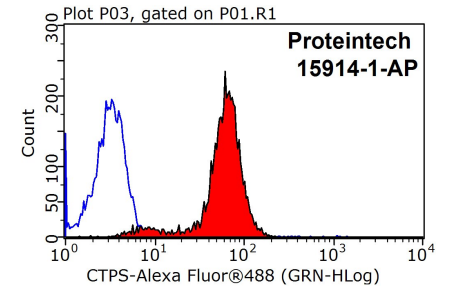
Immunohistochemical analysis of paraffin-embedded human liver cancer tissue slide using 15914-1-AP (CTP synthase antibody) at dilution of 1:200 (under 10x lens). Heat mediated antigen retrieval with Tris-EDTA buffer (pH 9.0).



Immunohistochemical analysis of paraffin-embedded human liver cancer tissue slide using 15914-1-AP (CTP synthase antibody) at dilution of 1:200 (under 40x lens). Heat mediated antigen retrieval with Tris-EDTA buffer (pH 9.0).



Immunofluorescent analysis of HepG2 cells, using CTPS antibody 15914-1-AP at 1:25 dilution and Rhodamine-labeled goat anti-rabbit IgG (red).



1X10⁶ HepG2 cells were stained with 0.2ug CTP synthase antibody (15914-1-AP, red) and control antibody (blue). Fixed with 90% MeOH blocked with 3% BSA (30 min). Alexa Fluor 488-conjugated AffiniPure Goat Anti-Rabbit IgG(H+L) with dilution 1:1500.