

## Allgemeine Informationen

Katalog-Nr.:  
15932-1-AP

Größe:  
150ul, Konzentration: 200 µg/ml  
durch die Bradford-Methode mit BSA  
als Standard;

Wirt:  
Kaninchen

Isotyp:  
IgG

Immunogen Katalognummer:  
AG8779

GenBank-Zugangsnummer:  
BC009244

GeneID (NCBI):  
3418

Vollständiger Name:  
isocitrate dehydrogenase 2 (NADP+),  
mitochondrial

Berechnete Masse:  
452 aa, 51 kDa

Beobachtete Masse:  
41-47 kDa

Reinigungsmethode:  
Antigen-Affinitätsreinigung

Empfohlene Verdünnungen:  
WB 1:500-1:3000  
IP 0.5-4.0 µg für IP und 1:500-1:2000  
für WB  
IHC 1:200-1:800

## Anwendungen

Geprüfte Anwendungen:  
IHC, IP, WB, ELISA

In Publikationen genannte Anwendungen:  
IF, IHC, IP, WB

Getestete Reaktivität:  
Human, Maus, Ratte

Zitierte Arten:  
Huhn, Human, Maus

**Hinweis-IHC: Antigenmaskierung mit TE-Puffer pH 9,0 empfohlen. (\*) Wahlweise kann die Antigenmaskierung auch mit Citratpuffer pH 6,0 erfolgen.**

Positivkontrollen:

WB : HEK-293-Zellen, HeLa-Zellen, HepG2-Zellen, Jurkat-Zellen, K-562-Zellen, Mausherzgewebe, Maushirngewebe, Mauslebergewebe, Maus-Skelettmuskulgewebe, NIH/3T3-Zellen, Rattenlebergewebe, SH-SY5Y-Zellen

IP : Maushirngewebe,

IHC : humanes Kolonkarzinomgewebe, Mausnierengewebe

## Hintergrundinformationen

IDH2, also named as IDP and ICD-M, belongs to the isocitrate and isopropylmalate dehydrogenases family. It plays a role in intermediary metabolism and energy production. IDH2 is a mitochondrial NADP-dependent isocitrate dehydrogenase that catalyzes oxidative decarboxylation of isocitrate to alpha-ketoglutarate, producing NADPH. It may tightly associate or interact with the pyruvate dehydrogenase complex. IDH1 and IDH2 mutations could also contribute to tumorigenesis and cancer progression through increased mutagenesis. IDH2 has 2 isoforms with the MW of 51 kDa and 45 kDa, and the mature form is about 47 kDa and 41 kDa with the N-terminal transit peptide cleaved.

## Bemerkenswerte Veröffentlichungen

Verfasser	Pubmed ID	Journal	Anwendung
Teresa W-M Fan	36150727	J Immunol	
He Wen	25251602	J Neurochem	WB, IF
Lifang Li	36230229	Animals (Basel)	WB

## Lagerung

Lagerungsbedingungen:

Bei -20°C lagern. Nach dem Versand ein Jahr lang stabil

Lagerungspuffer:

PBS mit 0.02% Natriumazid und 50% Glycerin pH 7.3.

Aliquotieren ist nicht notwendig bei -20°C Lagerung

\*\*\* 20ul-Größen enthalten 0.1% BSA

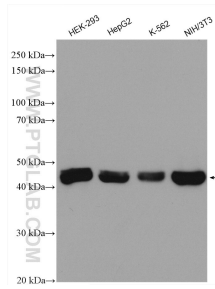
For technical support and original validation data for this product please contact:

T: 1 (888) 4PTGLAB (1-888-478-4522) (toll free in USA), or 1(312) 455-8498 (outside USA)

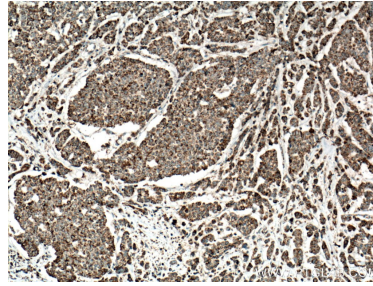
E: [proteintech@ptglab.com](mailto:proteintech@ptglab.com)  
W: [ptglab.com](http://ptglab.com)

This product is exclusively available under Proteintech Group brand and is not available to purchase from any other manufacturer.

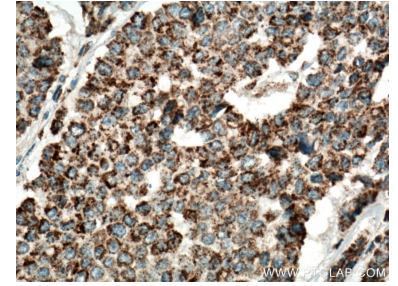
## Ausgewählte Validierungsdaten



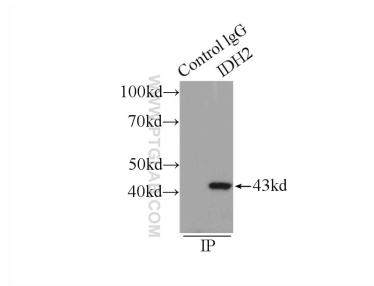
Various lysates were subjected to SDS PAGE followed by western blot with 15932-1-AP (IDH2 antibody) at dilution of 1:1500 incubated at room temperature for 1.5 hours.



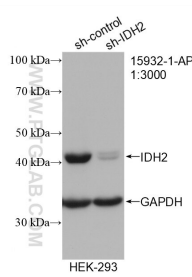
Immunohistochemical analysis of paraffin-embedded human colon cancer tissue slide using 15932-1-AP (IDH2 antibody) at dilution of 1:400 (under 10x lens. Heat mediated antigen retrieval with Tris-EDTA buffer (pH 9.0)).



Immunohistochemical analysis of paraffin-embedded human colon cancer tissue slide using 15932-1-AP (IDH2 antibody) at dilution of 1:400 (under 40x lens. Heat mediated antigen retrieval with Tris-EDTA buffer (pH 9.0)).



IP Result of anti-IDH2 (IP:15932-1-AP, 3ug; Detection:15932-1-AP 1:1000) with mouse brain tissue lysate 6000ug.



WB result of IDH2 antibody (15932-1-AP; 1:3000; incubated at room temperature for 1.5 hours) with sh-Control and sh-IDH2 transfected HEK-293 cells.