

## Allgemeine Informationen

**Katalog-Nr.:**

15940-1-AP

**Größe:**

150ul , Konzentration: 400 µg/ml von Nanodrop und 187 µg/ml durch die Bradford-Methode mit BSA als Standard;

**Wirt:**

Kaninchen

**Isotyp:**

IgG

**Immunogen Katalognummer:**

AG7964

**GenBank-Zugangsnummer:**

BC063014

**GeneID (NCBI):**

79626

**Vollständiger Name:**

tumor necrosis factor, alpha-induced protein 8-like 2

**Berechnete Masse:**

184 aa, 21 kDa

**Beobachtete Masse:**

18-20 kDa

**Reinigungsmethode:**

Antigen-Affinitätsreinigung

**Empfohlene Verdünnungen:**

WB 1:1000-1:6000  
IP 0.5-4.0 ug für IP und 1:500-1:1000 für WB  
IHC 1:50-1:500  
IF 1:10-1:100

## Anwendungen

**Geprüfte Anwendungen:**

IF, IHC, IP, WB, ELISA

**In Publikationen genannte Anwendungen:**

IF, IHC, IP, WB

**Getestete Reaktivität:**

Human, Maus, Ratte

**Zitierte Arten:**

Human, Maus, Ratte

**Hinweis-IHC: Antigendemaskierung mit TE-Puffer pH 9,0 empfohlen. (\*) Wahlweise kann die Antigendemaskierung auch mit Citratpuffer pH 6,0 erfolgen.**

**Positivkontrollen:**

**WB :** THP-1-Zellen, Maus-Cerebellum-Gewebe, Maus-Dünndarmgewebe, Mausmilzgewebe, Rattenlymphgewebe, Rattenmilzgewebe, RAW 264.7-Zellen

**IP :** Maus-Cerebellum-Gewebe,

**IHC :** humanes Lymphomgewebe, humanes Ovarialkarzinomgewebe, Mausmilzgewebe

**IF :** HepG2-Zellen,

## Hintergrundinformationen

TIPE2 (TNF- $\alpha$ -inducible protein 8-like 2, or TNFAIP8L2), a negative immune regulator, is essential for maintaining immune homeostasis. TIPE2 shares considerable sequence homology with members of the tumor necrosis factor- $\alpha$ -inducible protein 8 (TNFAIP8) family, which are thought to regulate cellular and immune homeostasis. TIPE2 acts as a negative regulator of Toll-like receptor and T-cell receptor function and is preferentially expressed in lymphoid tissues. TIPE2 plays an essential role for a signal transduction pathway that links inflammatory immune response to specific conditions after cerebral ischemia

## Bemerkenswerte Veröffentlichungen

Verfasser	Pubmed ID	Journal	Anwendung
Jiacheng Bi	34524845	Sci Adv	WB
Michitaka Oho	27601471	J Biol Chem	WB,IF
Svetlana A Fayngerts	29058702	Nat Immunol	WB,IF,IP

## Lagerung

**Lagerungsbedingungen:**

Bei -20°C lagern. Nach dem Versand ein Jahr lang stabil

**Lagerungspuffer:**

PBS mit 0.02% Natriumazid und 50% Glycerin pH 7.3.

Aliquotieren ist nicht notwendig bei -20°C Lagerung

**\*\*\* 20ul-Größen enthalten 0.1% BSA**

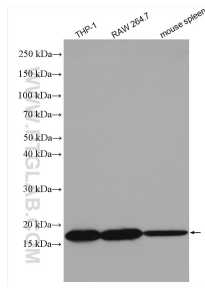
For technical support and original validation data for this product please contact:

T: 1 (888) 4PTGLAB (1-888-478-4522) (toll free in USA), or 1(312) 455-8498 (outside USA)

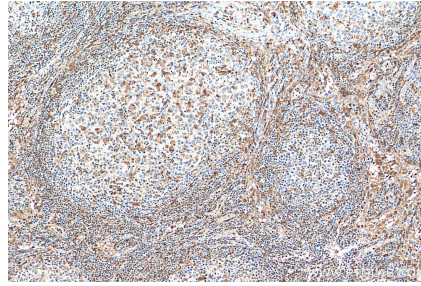
E: [proteintech@ptglab.com](mailto:proteintech@ptglab.com)  
W: [ptglab.com](http://ptglab.com)

**This product is exclusively available under Proteintech Group brand and is not available to purchase from any other manufacturer.**

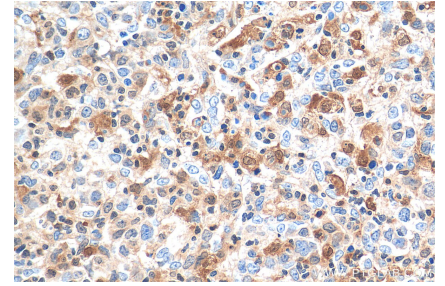
## Ausgewählte Validierungsdaten



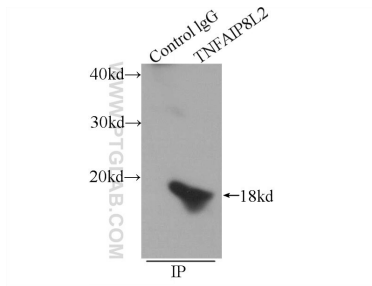
Various lysates were subjected to SDS PAGE followed by western blot with 15940-1-AP (TIPE2 antibody) at dilution of 1:3000 incubated at room temperature for 1.5 hours.



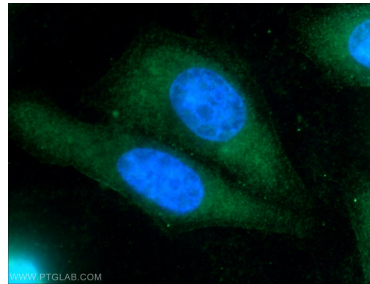
Immunohistochemical analysis of paraffin-embedded human lymphoma tissue slide using 15940-1-AP (TIPE2 antibody) at dilution of 1:200 (under 10x lens). Heat mediated antigen retrieval with Tris-EDTA buffer (pH 9.0).



Immunohistochemical analysis of paraffin-embedded human lymphoma tissue slide using 15940-1-AP (TIPE2 antibody) at dilution of 1:200 (under 40x lens). Heat mediated antigen retrieval with Tris-EDTA buffer (pH 9.0).



IP Result of anti-TIPE2 (IP:15940-1-AP, 3ug; Detection:15940-1-AP 1:500) with mouse cerebellum tissue lysate 4000ug.



Immunofluorescent analysis of HepG2 cells using 15940-1-AP (TIPE2 antibody) at dilution of 1:25 and Alexa Fluor 488-conjugated AffiniPure Goat Anti-Rabbit IgG(H+L).