

Nur für Forschungszwecke

Glucagon Polyklonaler Antikörper

Katalog-Nr.: 15954-1-AP

29 Publikationen



Allgemeine Informationen

Katalog-Nr.: 15954-1-AP	GenBank-Zugangsnummer: BC005278	Reinigungsmethode: Antigen-Affinitätsreinigung
Größe: 150ul, Konzentration: 450 µg/ml von Nanodrop und 240 µg/ml durch die Bradford-Methode mit BSA als Standard;	GeneID (NCBI): 2641	Empfohlene Verdünnungen: IHC 1:12800-1:51200 IF 1:200-1:800
Wirt: Kaninchen	Vollständiger Name: glucagon	
Isotyp: IgG	Berechnete Masse: 180 aa, 21 kDa	
Immunogen Katalognummer: AG8677		

Anwendungen

Geprüfte Anwendungen: IF, IHC, ELISA	Positivkontrollen: IHC : humanes Pankreasgewebe, humanes Dünndarmgewebe, humanes Kolongewebe, Maus-Dünndarmgewebe, Ratten-Pankreasgewebe
In Publikationen genannte Anwendungen: IF, IHC	IF : Maus-Pankreasgewebe, humanes Pankreasgewebe
Getestete Reaktivität: Human, Maus, Ratte	
Zitierte Arten: Human, Maus, Ratte	
Hinweis-IHC: Antigendemaskierung mit TE-Puffer pH 9,0 empfohlen. (*) Wahlweise kann die Antigendemaskierung auch mit Citratpuffer pH 6,0 erfolgen.	

Hintergrundinformationen

Glucagon is a 29-amino acid peptide hormone secreted from the pancreatic alpha cells with a powerful stimulatory effect on hepatic glucose production acting to increase plasma glucose levels. Glucagon is best known as the counter-regulatory hormone to insulin, and normal glucose homeostasis depends largely on the balanced secretion of insulin and glucagon from the pancreatic beta and alpha cells, respectively. The regulation of glucose metabolism by glucagon is mediated by its direct action on the peripheral tissues such as the liver and also by the brain. Glucagon is also released postprandially in a transient manner, which was shown to be involved in inhibition of food intake via reduction of meal size.

Bemerkenswerte Veröffentlichungen

Verfasser	Pubmed ID	Journal	Anwendung
Xiaoyi Zhang	34556631	Cell Death Dis	IF
Nicholas C Vierra	28928238	Sci Signal	
Simeng Bao	34699923	Food Chem Toxicol	IF

Lagerung

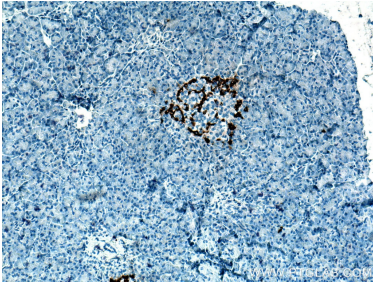
Lagerungsbedingungen:
Bei -20°C lagern. Nach dem Versand ein Jahr lang stabil
Lagerungspuffer:
PBS mit 0.02% Natriumazid und 50% Glycerin pH 7.3.
Aliquotieren ist nicht notwendig bei -20°C Lagerung

*** 20ul-Größen enthalten 0.1% BSA

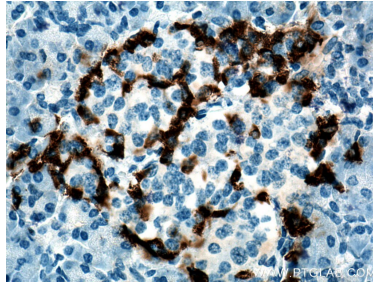
For technical support and original validation data for this product please contact:
T: 1 (888) 4PTGLAB (1-888-478-4522) (toll free in USA), or 1(312) 455-8498 (outside USA)
E: proteintech@ptglab.com
W: ptglab.com

This product is exclusively available under Proteintech Group brand and is not available to purchase from any other manufacturer.

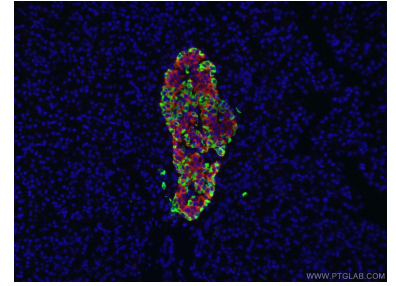
Ausgewählte Validierungsdaten



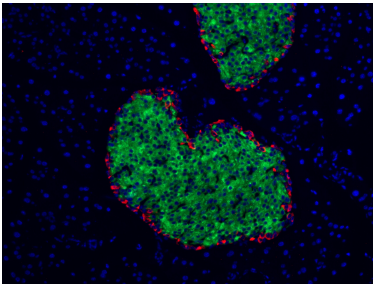
Immunohistochemical analysis of paraffin-embedded human pancreas tissue slide using 15954-1-AP (Glucagon antibody) at dilution of 1:25600 (under 10x lens). Heat mediated antigen retrieval with Tris-EDTA buffer (pH 9.0).



Immunohistochemical analysis of paraffin-embedded human pancreas tissue slide using 15954-1-AP (Glucagon antibody) at dilution of 1:25600 (under 40x lens). Heat mediated antigen retrieval with Tris-EDTA buffer (pH 9.0).



Immunofluorescent analysis of (4% PFA) fixed human pancreas tissue using 15954-1-AP (Glucagon antibody) at dilution of 1:50 and CoraLite488-Conjugated AffiniPure Goat Anti-Rabbit IgG(H+L). The B cells of the islets of Langerhans was labelled in red with 66198-1-Ig (INS antibody).



Immunofluorescent analysis of (4% PFA) fixed mouse pancreas tissue using 15954-1-AP (Glucagon antibody), at dilution of 1:400 and CoraLite®594-Conjugated AffiniPure Goat Anti-Rabbit IgG(H+L). The B cells of the islets of Langerhans was labelled in green with CL488-66198.