

Nur für Forschungszwecke

ERp57/ERp60 Polyklonaler Antikörper



Katalog-Nr.:15967-1-AP

Vorgestelltes Produkt

26 Publikationen

Allgemeine Informationen

Katalog-Nr.: 15967-1-AP	GenBank-Zugangsnummer: BC014433	Reinigungsmethode: Antigen-Affinitätsreinigung
Größe: 150ul , Konzentration: 550 µg/ml von Nanodrop;	GeneID (NCBI): 2923	Empfohlene Verdünnungen: WB 1:2000-1:16000 IP 0.5-4.0 ug für IP und 1:1000-1:4000 für WB
Wirt: Kaninchen	Vollständiger Name: protein disulfide isomerase family A, member 3	IHC 1:50-1:500 IF 1:200-1:800
Isotyp: IgG	Berechnete Masse: 505 aa, 57 kDa	
Immunogen Katalognummer: AG8741	Beobachtete Masse: 57 kDa	

Anwendungen

Geprüfte Anwendungen:
FC, IF, IHC, IP, WB, ELISA

In Publikationen genannte Anwendungen:
ELISA, IF, IHC, IP, WB

Getestete Reaktivität:
Human, Maus, Ratte

Zitierte Arten:
Hausschwein, Human, Maus, Ratte

Hinweis-IHC: Antigenmaskierung mit TE-Puffer pH 9,0 empfohlen. (*) Wahlweise kann die Antigenmaskierung auch mit Citratpuffer pH 6,0 erfolgen.

Positivkontrollen:

WB: A375-Zellen, LO2-Zellen, Mauslebergewebe, Rattenlebergewebe

IP: Mauslebergewebe,

IHC: humanes Lungenkarzinomgewebe,

IF: HepG2-Zellen,

Hintergrundinformationen

PDIA3, also named as P58, ER60, ERp57, ERp60, ERp61, GRP57, GRP58 and PI-PLC, is a member of the PDI family, participates in the oxidation, reduction, and isomerization of disulfide bonds for correct folding of secretory proteins before modification and transport in the endoplasmic reticulum. It is associated with apoptosis or inhibition of cancer cell growth. PDIA3 was once thought to be a phospholipase; however, it has been demonstrated that this protein actually has protein disulfide isomerase activity. It is thought that complexes of lectins and PDIA3 mediate protein folding by promoting formation of disulfide bonds in their glycoprotein substrates.

Bemerkenswerte Veröffentlichungen

Verfasser	Pubmed ID	Journal	Anwendung
Jing Sun	34650437	Front Pharmacol	WB
Xin-Yu Guo	32967966	J Biol Chem	WB
Soma Samanta	29262583	Oncotarget	WB,IHC

Lagerung

Lagerungsbedingungen:

Bei -20°C lagern. Nach dem Versand ein Jahr lang stabil

Lagerungspuffer:

PBS mit 0.02% Natriumazid und 50% Glycerin pH 7.3.

Aliquotieren ist nicht notwendig bei -20°C Lagerung

***** 20ul-Größen enthalten 0.1% BSA**

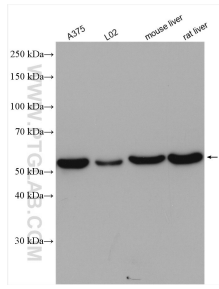
For technical support and original validation data for this product please contact:

T: 1 (888) 4PTGLAB (1-888-478-4522) (toll free in USA), or 1(312) 455-8498 (outside USA)

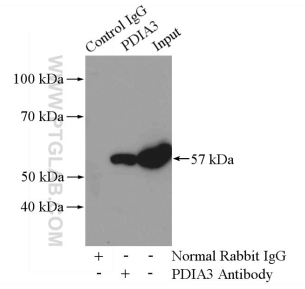
E: proteintech@ptglab.com
W: ptglab.com

This product is exclusively available under Proteintech Group brand and is not available to purchase from any other manufacturer.

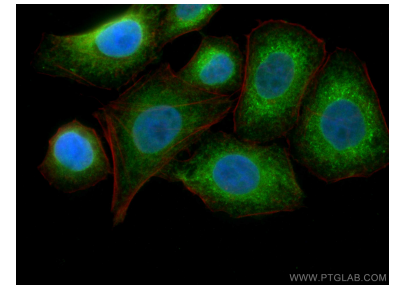
Ausgewählte Validierungsdaten



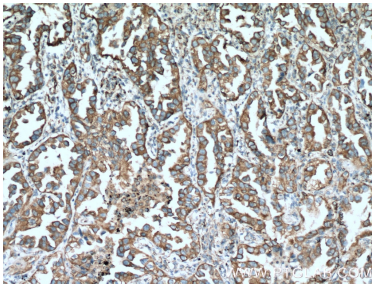
Various lysates were subjected to SDS PAGE followed by western blot with 15967-1-AP (ERp57/ERp60 antibody) at dilution of 1:8000 incubated at room temperature for 1.5 hours.



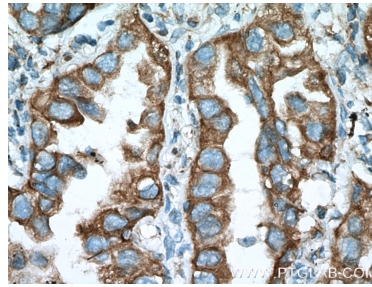
IP Result of anti-ERp57/ERp60 (IP:15967-1-AP, 4ug; Detection:15967-1-AP 1:2000) with mouse liver tissue lysate 4000ug.



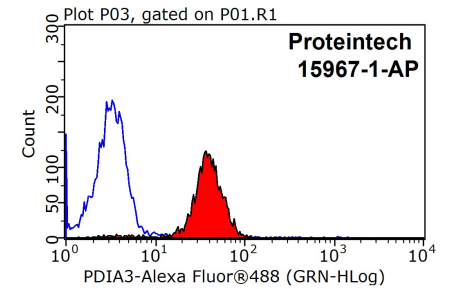
Immunofluorescent analysis of (4% PFA) fixed HepG2 cells using ERp57/ERp60 antibody (15967-1-AP) at dilution of 1:400 and CoraLite@488-Conjugated AffiniPure Goat Anti-Rabbit IgG(H+L), CL594-Phalloidin (red).



Immunohistochemical analysis of paraffin-embedded human lung cancer tissue slide using 15967-1-AP (ERp57/ERp60 antibody) at dilution of 1:200 (under 10x lens). Heat mediated antigen retrieval with Tris-EDTA buffer (pH 9.0).



Immunohistochemical analysis of paraffin-embedded human lung cancer tissue slide using 15967-1-AP (ERp57/ERp60 antibody) at dilution of 1:200 (under 40x lens). Heat mediated antigen retrieval with Tris-EDTA buffer (pH 9.0).



1X10⁶ HepG2 cells were stained with 0.2ug ERp57/ERp60 antibody (15967-1-AP, red) and control antibody (blue). Fixed with 90% MeOH blocked with 3% BSA (30 min). Alexa Fluor 488-conjugated AffiniPure Goat Anti-Rabbit IgG(H+L) with dilution 1:1500.