

Nur für Forschungszwecke

NBR1 Polyklonaler Antikörper

Katalog-Nr.:16004-1-AP

Vorgestelltes Produkt

40 Publikationen



Allgemeine Informationen

Katalog-Nr.: 16004-1-AP	GenBank-Zugangsnummer: BC009808	Reinigungsmethode: Antigen-Affinitätsreinigung
Größe: 150ul , Konzentration: 750 µg/ml von Nanodrop;	GeneID (NCBI): 4077	Empfohlene Verdünnungen: WB 1:500-1:1000 IP 0.5-4.0 ug für IP und 1:500-1:1000 für WB
Wirt: Kaninchen	Vollständiger Name: neighbor of BRCA1 gene 1	IHC 1:50-1:500 IF 1:200-1:800
Isotyp: IgG	Berechnete Masse: 966 aa, 107 kDa	
Immunogen Katalognummer: AG8652	Beobachtete Masse: 140 kDa	

Anwendungen

Geprüfte Anwendungen: FC, IF, IHC, IP, WB, ELISA	Positivkontrollen: WB : HeLa-Zellen, COS-7-Zellen, HepG2-Zellen
In Publikationen genannte Anwendungen: CoIP, IF, IHC, IP, WB	IP : HeLa-Zellen,
Getestete Reaktivität: Affe, Human, Maus, Ratte	IHC : Mausherzgewebe, humanes Mammakarzinomgewebe
Zitierte Arten: Human, Hund, Maus	IF : HeLa-Zellen,

Hinweis-IHC: Antigendemaskierung mit TE-Puffer pH 9,0 empfohlen. (*) Wahlweise kann die Antigendemaskierung auch mit Citratpuffer pH 6,0 erfolgen.

Hintergrundinformationen

NBR1, also named as 1A13B, KIAA0049 and M17S2, acts probably as a receptor for selective autophagosomal degradation of ubiquitinated targets. NBR1 and P62 can bind to autophagic effector proteins (Atg8 in yeast, MAP1LC3 protein family in mammals) anchored in the membrane of autophagosomes. It is a highly conserved multidomain scaffold protein with proposed roles in endocytic trafficking and selective autophagy. NBR1 is a novel PB1 adapter in Th2 differentiation and asthma. It functions as an autophagy receptor involved in targeting ubiquitinated proteins for degradation. It also has a dual role as a scaffold protein to regulate growth-factor receptor and downstream signaling pathways. Observed MW of NBR1 is 140 kDa (PMID: 22654911, PMID: 22484440).

Bemerkenswerte Veröffentlichungen

Verfasser	Pubmed ID	Journal	Anwendung
Marie Chollat-Namy	31541080	Cell Death Dis	WB,IP
Hongyu Li	30160596	Autophagy	WB
Qiong Lin	29021346	J Cell Sci	WB

Lagerung

Lagerungsbedingungen:
Bei -20°C lagern. Nach dem Versand ein Jahr lang stabil

Lagerungspuffer:
PBS mit 0.02% Natriumazid und 50% Glycerin pH 7.3.

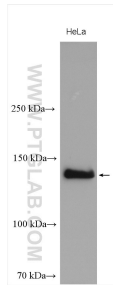
Aliquotieren ist nicht notwendig bei -20°C Lagerung

*** 20ul-Größen enthalten 0.1% BSA

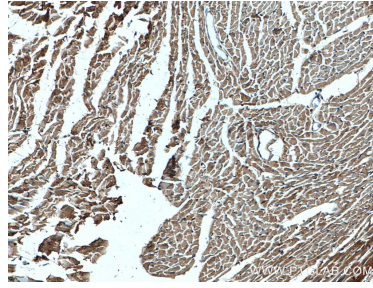
For technical support and original validation data for this product please contact:
T: 1 (888) 4PTGLAB (1-888-478-4522) (toll free in USA), or 1(312) 455-8498 (outside USA)
E: proteintech@ptglab.com
W: ptglab.com

This product is exclusively available under Proteintech Group brand and is not available to purchase from any other manufacturer.

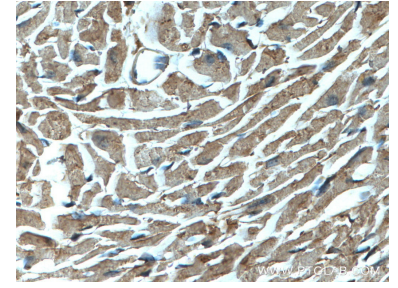
Ausgewählte Validierungsdaten



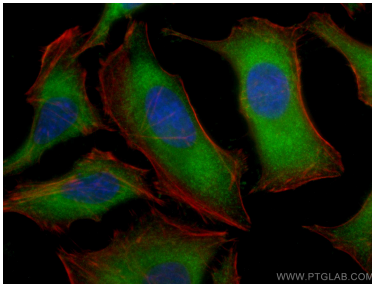
HeLa cells were subjected to SDS PAGE followed by western blot with 16004-1-AP (NBR1 antibody) at dilution of 1:800 incubated at room temperature for 1.5 hours.



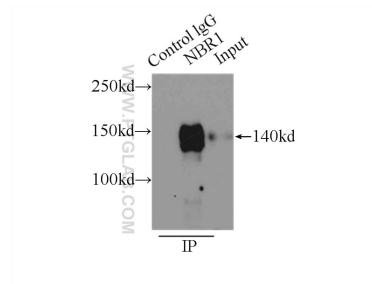
Immunohistochemical analysis of paraffin-embedded mouse heart tissue slide using 16004-1-AP (NBR1 antibody) at dilution of 1:200 (under 10x lens). Heat mediated antigen retrieval with Tris-EDTA buffer (pH 9.0).



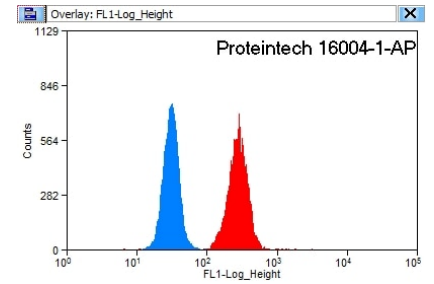
Immunohistochemical analysis of paraffin-embedded mouse heart tissue slide using 16004-1-AP (NBR1 antibody) at dilution of 1:200 (under 40x lens). Heat mediated antigen retrieval with Tris-EDTA buffer (pH 9.0).



Immunofluorescent analysis of (-20°C Ethanol) fixed HeLa cells using NBR1 antibody (16004-1-AP) at dilution of 1:400 and CoraLite®488-Conjugated AffiniPure Goat Anti-Rabbit IgG(H+L), CL594-Phalloidin (red).



IP Result of anti-NBR1 (IP:16004-1-AP, 4ug; Detection:16004-1-AP 1:800) with HeLa cells lysate 2500ug.



1X10⁶ HeLa cells were stained with 0.2ug NBR1 antibody (16004-1-AP, red) and control antibody (blue). Fixed with 90% MeOH blocked with 3% BSA (30 min). Alexa Fluor 488-conjugated AffiniPure Goat Anti-Rabbit IgG(H+L) with dilution 1:1500.