

Nur für Forschungszwecke

CISD1 Polyklonaler Antikörper

Katalog-Nr.:16006-1-AP

Vorgestelltes Produkt

35 Publikationen



Allgemeine Informationen

Katalog-Nr.: 16006-1-AP	GenBank-Zugangsnummer: BC007043	Reinigungsmethode: Antigen-Affinitätsreinigung
Größe: 150ul, Konzentration: 800 µg/ml von Nanodrop;	GeneID (NCBI): 55847	Empfohlene Verdünnungen: WB 1:5000-1:50000 IP 0.5-4.0 µg für IP und 1:1000-1:4000 für WB
Wirt: Kaninchen	Vollständiger Name: CDGSH iron sulfur domain 1	IHC 1:50-1:500 IF 1:50-1:500
Isotyp: IgG	Berechnete Masse: 108 aa, 12 kDa	
Immunogen Katalognummer: AG8680	Beobachtete Masse: 14-17 kDa	

Anwendungen

Geprüfte Anwendungen:
FC, IF, IHC, IP, WB, ELISA

In Publikationen genannte Anwendungen:
IF, IHC, IP, WB

Getestete Reaktivität:
Human, Maus, Ratte

Zitierte Arten:
Human, Maus, Ratte

Hinweis-IHC: Antigenemaskierung mit TE-Puffer pH 9,0 empfohlen. (*) Wahlweise kann die Antigenemaskierung auch mit Citratpuffer pH 6,0 erfolgen.

Positivkontrollen:

WB: Mausnierengewebe, Maus-Skelettmuskelgewebe, Rattennierengewebe, Ratten-Skelettmuskelgewebe

IP: HepG2-Zellen,

IHC: humanes Pankreaskarzinomgewebe,

IF: HepG2-Zellen,

Hintergrundinformationen

MitoNEET, also named CISD1, belongs to a previously uncharacterized ancient family of proteins for which the hallmark is the presence of a unique 39 amino acid CDGSH domain. It is a single-pass type III membrane protein, located in mitochondrion outer membrane and may play a role in regulating maximal capacity for electron transport and oxidative phosphorylation. MitoNEET is a recently identified drug target for a commonly prescribed diabetes drug, Pioglitazone. This antibody recognizing MitoNEET (calculated 12 kDa) as a 17 kDa protein may be due to its posttranslational modification or metal binding activity.

Bemerkenswerte Veröffentlichungen

Verfasser	Pubmed ID	Journal	Anwendung
Malte Gersch	28945249	Nat Struct Mol Biol	WB
Megan E Roche	32920118	Biochim Biophys Acta Mol Basis Dis	WB
Werner J Geldenhuys	28880525	ACS Chem Neurosci	WB,IHC,IF

Lagerung

Lagerungsbedingungen:

Bei -20°C lagern. Nach dem Versand ein Jahr lang stabil

Lagerungspuffer:

PBS mit 0.02% Natriumazid und 50% Glycerin pH 7.3.

Aliquotieren ist nicht notwendig bei -20°C Lagerung

*** 20ul-Größen enthalten 0.1% BSA

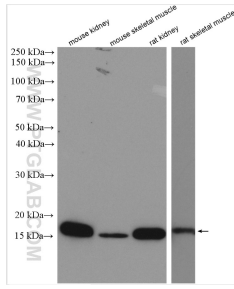
For technical support and original validation data for this product please contact:

T: 1 (888) 4PTGLAB (1-888-478-4522) (toll free in USA), or 1(312) 455-8498 (outside USA)

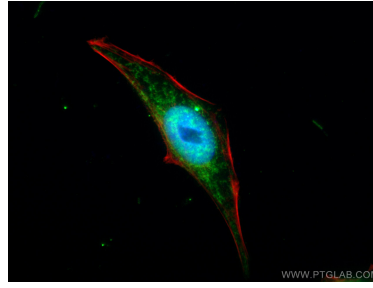
E: proteintech@ptglab.com
W: ptglab.com

This product is exclusively available under Proteintech Group brand and is not available to purchase from any other manufacturer.

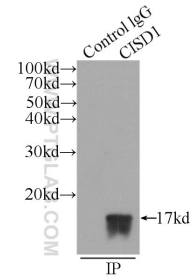
Ausgewählte Validierungsdaten



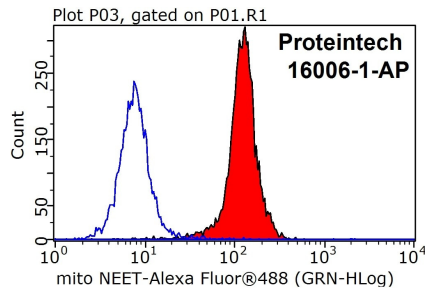
Various lysates were subjected to SDS PAGE followed by western blot with 16006-1-AP (CISD1 antibody) at dilution of 1:30000 incubated at room temperature for 1.5 hours.



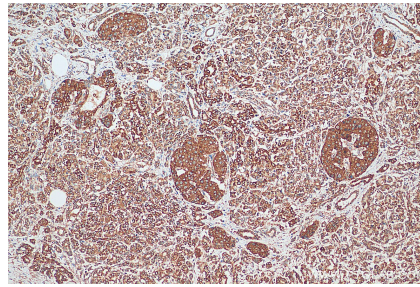
Immunofluorescent analysis of (4% PFA) fixed HepG2 cells using CISD1 antibody (16006-1-AP) at dilution of 1:200 and CoraLite@488-Conjugated AffiniPure Goat Anti-Rabbit IgG(H+L), CL594-Phalloidin (red).



IP Result of anti-CISD1 (IP:16006-1-AP, 3ug; Detection:16006-1-AP 1:2000) with HepG2 cells lysate 600ug.



1X10⁶ HeLa cells were stained with .05ug mitoNEET, CISD1 antibody (16006-1-AP, red) and control antibody (blue). Fixed with 90% MeOH blocked with 3% BSA (30 min). Alexa Fluor 488-Goat anti-Rabbit IgG with dilution 1:100.



Immunohistochemical analysis of paraffin-embedded human pancreas cancer tissue slide using 16006-1-AP (CISD1 antibody) at dilution of 1:200 (under 10x lens). Heat mediated antigen retrieval with Tris-EDTA buffer (pH 9.0).