

Allgemeine Informationen

Katalog-Nr.: 16036-1-AP	GenBank-Zugangsnummer: BC009799	Reinigungsmethode: Antigen-Affinitätsreinigung
Größe: 150ul , Konzentration: 750 µg/ml von Nanodrop;	GeneID (NCBI): 374	Empfohlene Verdünnungen: WB 1:500-1:1000 IP 0.5-4.0 ug für IP und 1:1000-1:4000 für WB
Wirt: Kaninchen	Vollständiger Name: amphiregulin	IHC 1:50-1:500 IF 1:50-1:500
Isotyp: IgG	Berechnete Masse: 252 aa, 28 kDa	
Immunogen Katalognummer: AG8907	Beobachtete Masse: 43 kDa	

Anwendungen

Geprüfte Anwendungen: FC (Intra), IF, IHC, IP, WB, ELISA	Positivkontrollen: WB : MCF-7-Zellen, A549-Zellen, HepG2-Zellen
In Publikationen genannte Anwendungen: IF, IHC, IP, WB	IP : HepG2-Zellen,
Getestete Reaktivität: Human	IHC : humanes Kolonkarzinomgewebe, humanes Kolongewebe
Zitierte Arten: Human, Maus, Ratte	IF : humanes Kolonkarzinomgewebe,

Hinweis-IHC: Antigenmaskierung mit TE-Puffer pH 9,0 empfohlen. (*) Wahlweise kann die Antigenmaskierung auch mit Citratpuffer pH 6,0 erfolgen.

Hintergrundinformationen

Amphiregulin (AREG) is one of the ligands of the epidermal growth factor receptor (EGFR). AREG plays a central role in mammary gland development and branching morphogenesis in organs and is expressed both in physiological and in cancerous tissues. The AREG protein is synthesized as a 252-amino acid transmembrane precursor, pro-AREG. At the plasma membrane, pro-AREG is subjected to sequential proteolytic cleavages within its ectodomain and is then released as the soluble AREG protein. Depending on the cell type and microenvironment, AREG can be produced in multiple cellular and mature forms using alternative pro-AREG cleavage sites and glycosylation motifs. Post-translational modifications of 50-kDa pro-AREG produces a major soluble 43-kDa form, 28-, 26-, 16-kDa membrane anchored forms, and soluble 21-, 19-, and 9-kDa forms (PMID: 9642297).

Bemerkenswerte Veröffentlichungen

Verfasser	Pubmed ID	Journal	Anwendung
Qixia Xu	31493351	Aging Cell	WB,IHC,IP
Nicole E James	36131935	Front Immunol	IHC
Zhiguang Xiao	34761189	iScience	WB

Lagerung

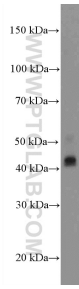
Lagerungsbedingungen:
Bei -20°C lagern. Nach dem Versand ein Jahr lang stabil
Lagerungspuffer:
PBS mit 0.02% Natriumazid und 50% Glycerin pH 7.3.
 Aliquotieren ist nicht notwendig bei -20°C Lagerung

***** 20ul-Größen enthalten 0.1% BSA**

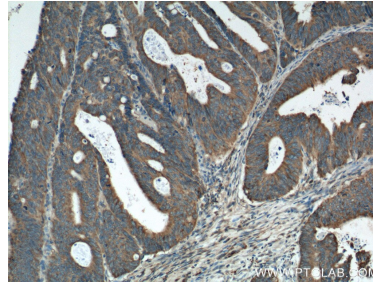
For technical support and original validation data for this product please contact:
 T: 1 (888) 4PTGLAB (1-888-478-4522) (toll free in USA), or 1(312) 455-8498 (outside USA)
 E: proteintech@ptglab.com
 W: ptglab.com

This product is exclusively available under Proteintech Group brand and is not available to purchase from any other manufacturer.

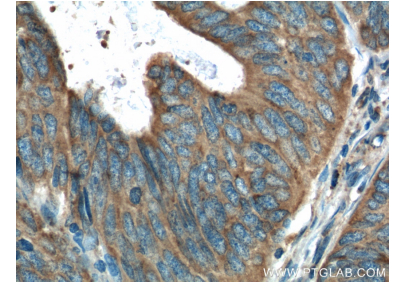
Ausgewählte Validierungsdaten



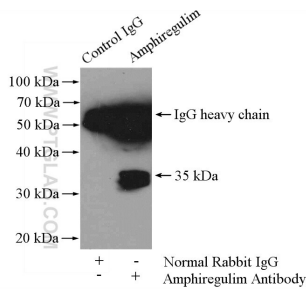
MCF-7 cells were subjected to SDS PAGE followed by western blot with 16036-1-AP (Amphiregulin antibody at dilution of 1:600 incubated at room temperature for 1.5 hours.



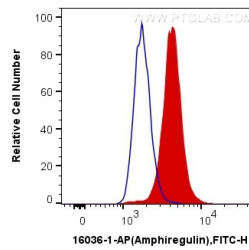
Immunohistochemical analysis of paraffin-embedded human colon cancer tissue slide using 16036-1-AP (Amphiregulin antibody at dilution of 1:200 (under 10x lens). Heat mediated antigen retrieval with Tris-EDTA buffer (pH 9.0).



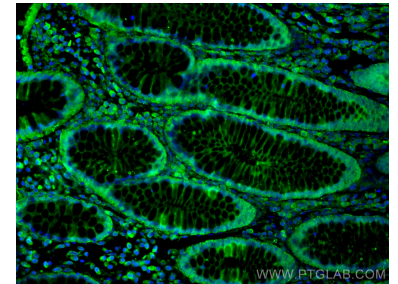
Immunohistochemical analysis of paraffin-embedded human colon cancer tissue slide using 16036-1-AP (Amphiregulin antibody at dilution of 1:200 (under 40x lens). Heat mediated antigen retrieval with Tris-EDTA buffer (pH 9.0).



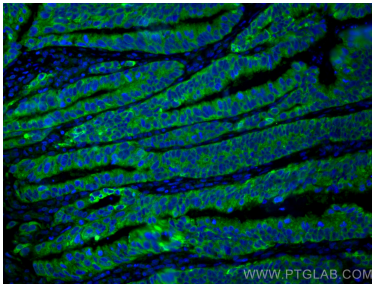
IP Result of anti-Amphiregulin (IP:16036-1-AP, 4ug; Detection:16036-1-AP 1:2000) with HepG2 cells lysate 3600ug.



1x10⁶ HeLa cells were intracellularly stained with 0.2 ug Anti-Human Amphiregulin (16036-1-AP) and CoraLite®488-Conjugated AffiniPure Goat Anti-Rabbit IgG(H+L) at dilution 1:1000 (red), or 0.2 ug Control Antibody. Cells were fixed with 4% PFA and permeabilized with Flow Cytometry Perm Buffer (PF00011-C).



Immunofluorescent analysis of (4% PFA) fixed human colon cancer tissue using Amphiregulin antibody (16036-1-AP) at dilution of 1:200 and CoraLite®488-Conjugated AffiniPure Goat Anti-Rabbit IgG(H+L).



Immunofluorescent analysis of (4% PFA) fixed human colon cancer tissue using Amphiregulin antibody (16036-1-AP) at dilution of 1:200 and CoraLite®488-Conjugated AffiniPure Goat Anti-Rabbit IgG(H+L).