

Nur für Forschungszwecke

TUSC3 Polyklonaler Antikörper

Katalog-Nr.:16039-1-AP

Vorgestelltes Produkt

7 Publikationen



Allgemeine Informationen

Katalog-Nr.:
16039-1-AP

Größe:
150ul, Konzentration: 160 µg/ml von
Nanodrop und 160 µg/ml durch die
Bradford-Methode mit BSA als
Standard;

Wirt:
Kaninchen

Isotyp:
IgG

Immunogen Katalognummer:
AG8912

GenBank-Zugangsnummer:
BC010370

GeneID (NCBI):
7991

Vollständiger Name:
tumor suppressor candidate 3

Berechnete Masse:
347 aa, 40 kDa

Beobachtete Masse:
35-40 kDa

Reinigungsmethode:

Antigen-Affinitätsreinigung

Empfohlene Verdünnungen:

WB 1:500-1:3000

Anwendungen

Geprüfte Anwendungen:

WB, ELISA

In Publikationen genannte Anwendungen:

IHC, WB

Getestete Reaktivität:

Human, Maus, Ratte

Zitierte Arten:

Human

Positivkontrollen:

WB: HeLa-Zellen, Maushirngewebe,
Rattenhodengewebe

Hintergrundinformationen

TUSC3 (tumor suppressor candidate 3), originally named N33, is a potential tumor suppressor gene. Decreased expression of TUSC3 has been found in various cancers, including prostate cancer, pancreas cancer and ovary cancer. TUSC3 also known as OST3A, is identified as a part of the oligosaccharyl-transferase (OST) complex and plays a crucial role in protein N-glycosylation. TUSC3 mutations have been found in families with non-syndromic autosomal recessive mental retardation.

Bemerkenswerte Veröffentlichungen

Verfasser	Pubmed ID	Journal	Anwendung
Ruxia Deng	36274132	J Transl Med	IHC
Young-Jun Jeon	30504895	Nat Commun	
Natalia A Cherepanova	26864433	Sci Rep	WB

Lagerung

Lagerungsbedingungen:

Bei -20°C lagern. Nach dem Versand ein Jahr lang stabil

Lagerungspuffer:

PBS mit 0.02% Natriumazid und 50% Glycerin pH 7.3.

Aliquotieren ist nicht notwendig bei -20°C Lagerung

*** 20ul-Größen enthalten 0.1% BSA

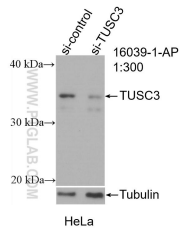
For technical support and original validation data for this product please contact:

T: 1 (888) 4PTGLAB (1-888-478-4522) (toll free
in USA), or 1(312) 455-8498 (outside USA)

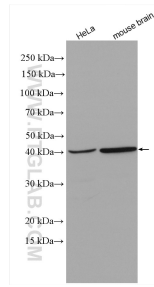
E: proteintech@ptglab.com
W: ptglab.com

This product is exclusively available under Proteintech Group brand and is not available to purchase from any other manufacturer.

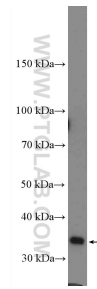
Ausgewählte Validierungsdaten



WB result of TUSC3 antibody (16039-1-AP; 1:300; incubated at room temperature for 1.5 hours) with sh-Control and sh-TUSC3 transfected HeLa cells.



Various lysates were subjected to SDS PAGE followed by western blot with 16039-1-AP (TUSC3 antibody) at dilution of 1:1500 incubated at room temperature for 1.5 hours.



rat testis tissue were subjected to SDS PAGE followed by western blot with 16039-1-AP (TUSC3 Antibody) at dilution of 1:300 incubated at room temperature for 1.5 hours.