

Nur für Forschungszwecke

BCCIP Polyklonaler Antikörper

Katalog-Nr.:16043-1-AP

Vorgestelltes Produkt

5 Publikationen



Allgemeine Informationen

Katalog-Nr.:
16043-1-AP

Größe:
150ul , Konzentration: 600 µg/ml von Nanodrop und 333 µg/ml durch die Bradford-Methode mit BSA als Standard;

Wirt:
Kaninchen

Isotyp:
IgG

Immunogen Katalognummer:
AG8934

GenBank-Zugangsnummer:
BC009771

GeneID (NCBI):
56647

Vollständiger Name:
BRCA2 and CDKN1A interacting protein

Berechnete Masse:
314 aa, 36 kDa

Beobachtete Masse:
50-58 kDa

Reinigungsmethode:

Antigen-Affinitätsreinigung

Empfohlene Verdünnungen:

WB 1:500-1:1000
IP 0.5-4.0 ug für IP und 1:500-1:1000 für WB
IF 1:50-1:500

Anwendungen

Geprüfte Anwendungen:

IF, IP, WB, ELISA

In Publikationen genannte Anwendungen:

IF, IHC, WB

Getestete Reaktivität:

Human, Maus, Ratte

Zitierte Arten:

Human

Positivkontrollen:

WB : HeLa-Zellen, A549-Zellen

IP : HeLa-Zellen,

IF : HeLa-Zellen,

Hintergrundinformationen

BCCIP (or TOK1) is isolated as a BRCA2- and CDKN1A (p21)-interacting protein and is implicated in homologous recombination (HR) pathway and inhibition of DNA replication stress. BCCIP is an evolutionarily conserved nuclear protein with multiple interacting domains. BCCIP deficiency in mice impaired embryonic and postnatal neural development, causing severe ataxia, cerebral and cerebellar defects, and microcephaly, which are associated with spontaneous DNA damage and subsequent cell death in the proliferative cell populations of the neural system during embryogenesis. BCCIP is essential for maintaining the transactivation activity of wild type p53 suggesting a potential role of BCCIP in cancer etiology.

Bemerkenswerte Veröffentlichungen

Verfasser	Pubmed ID	Journal	Anwendung
Yi Sui	29932276	FEBS J	WB,IF
Fang Wang	32736693	Biochem Biophys Res Commun	WB
Jiaming Su	27535137	Protein Cell	WB,IF

Lagerung

Lagerungsbedingungen:

Bei -20°C lagern. Nach dem Versand ein Jahr lang stabil

Lagerungspuffer:

PBS mit 0.02% Natriumazid und 50% Glycerin pH 7.3.

Aliquotieren ist nicht notwendig bei -20°C Lagerung

*** 20ul-Größen enthalten 0.1% BSA

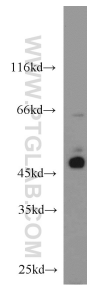
For technical support and original validation data for this product please contact:

T: 1 (888) 4PTGLAB (1-888-478-4522) (toll free in USA), or 1(312) 455-8498 (outside USA)

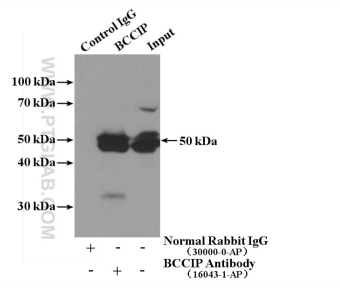
E: proteintech@ptglab.com
W: ptglab.com

This product is exclusively available under Proteintech Group brand and is not available to purchase from any other manufacturer.

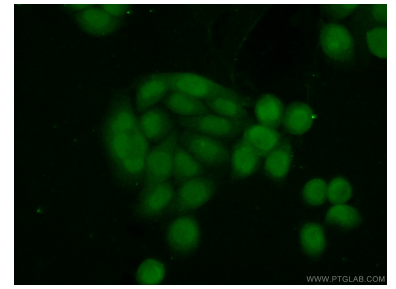
Ausgewählte Validierungsdaten



HeLa cells were subjected to SDS PAGE followed by western blot with 16043-1-AP (BCCIP antibody) at dilution of 1:800 incubated at room temperature for 1.5 hours.



IP Result of anti-BCCIP (IP:16043-1-AP, 4ug; Detection:16043-1-AP 1:800) with HeLa cells lysate 3200ug.



Immunofluorescent analysis of (10% Formaldehyde) fixed HeLa cells using 16043-1-AP (BCCIP antibody) at dilution of 1:50 and Alexa Fluor 488-conjugated AffiniPure Goat Anti-Rabbit IgG(H+L).